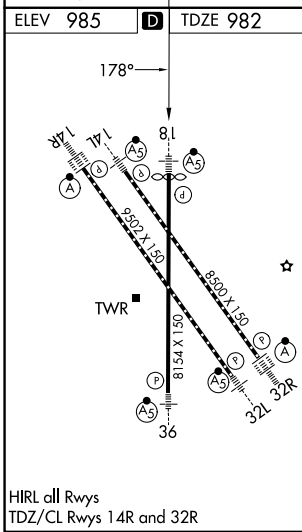
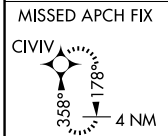
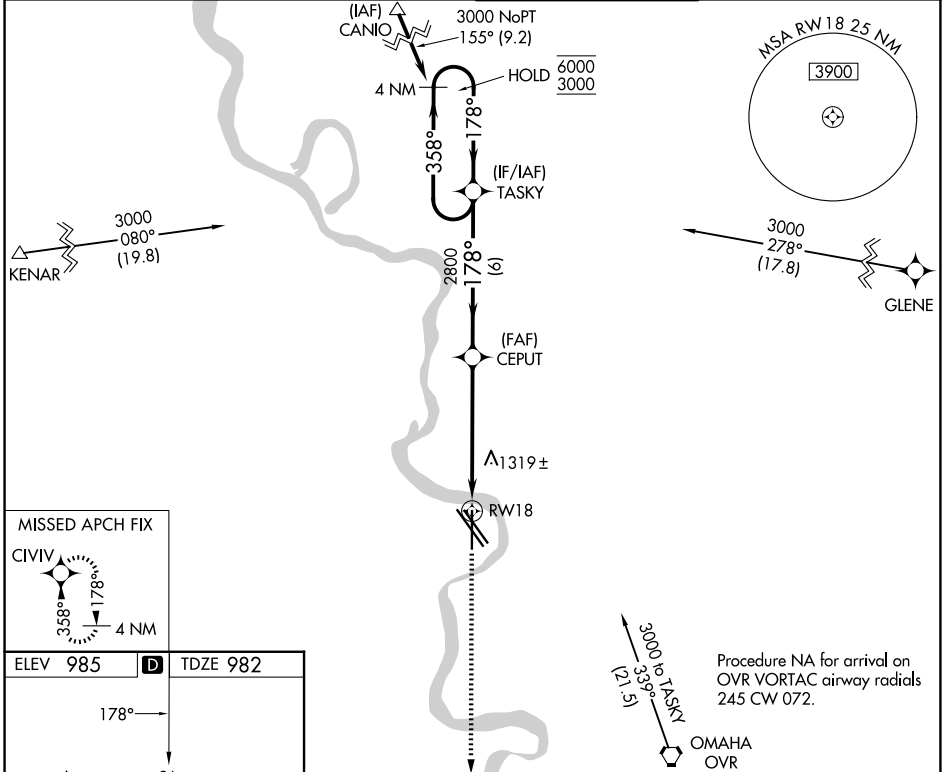


WAAS CH 65617 W18A	APP CRS 178°	Rwy Ldg 8013 TDZE 982 Apt Elev 985
--	------------------------	---

RNAV (GPS) Y RWY 18

EPPLEY AIRFIELD (OMA)

RNP APCH. ▼ For uncompensated Baro-VNAV systems, procedure NA below -19°C or above 54°C. ▲ # RVR 1800 authorized with use of FD or AP or HUD to DA.		MALSR AS	MISSED APPROACH: Climb to 3000 direct CIVIV and hold.
D-ATIS 120.4	OMAHA APP CON 135.875 354.05	OMAHA TOWER 132.1 256.9	GND CON 121.9



	4 NM Holding Pattern	TASKY	CEPUT	3000 CIVIV
	6000 ← 358° → 3000	178° → 178°	2800	↑ 3000
	GP 3.00° TCH 52	6 NM	4.1 NM	1.5 NM
CATEGORY	A	B	C	D
LPV DA#		1182/24	200 (200-½)	
LNAV/VNAV DA		1540/60	558 (600-1¼)	
LNAV MDA	1520/24	538 (600-½)	1520/55	538 (600-1)
CIRCLING	1660-1 675 (700-1)	1680-1 695 (700-1)	2000-3 1015 (1100-3)	2040-3 1055 (1100-3)

NC-2, 11 JUN 2026 to 09 JUL 2026

NC-2, 11 JUN 2026 to 09 JUL 2026