

HI-ILS Y or LOC Y RWY 14L

LOC I-TYF 111.5	APCH CRS 138°	Rwy Idg 10,008	TDZE 14	Arpt Elev 17
---------------------------	-------------------------	-------------------	------------	-----------------

[USAF]

TYNDALL AFB (KPAM)

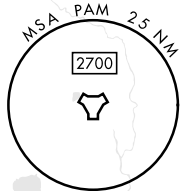
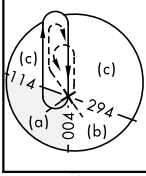
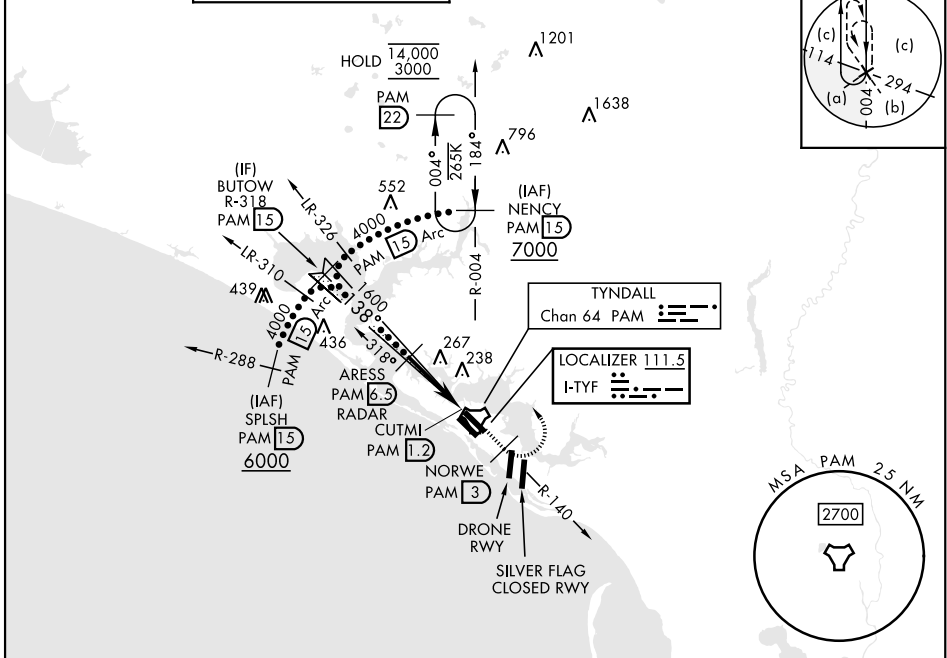
DME or RADAR required.

▼ * When ALS inop, increase RVR to 40, vis to ¾ mile.
 ** When ALS inop, increase vis to 1½ miles.



MISSED APPROACH: Track outbound PAM TACAN R-140 to 3 DME (NORWE), then turn left to join PAM R-004 to 15 DME (NENCY) and hold. Maintain 3000.

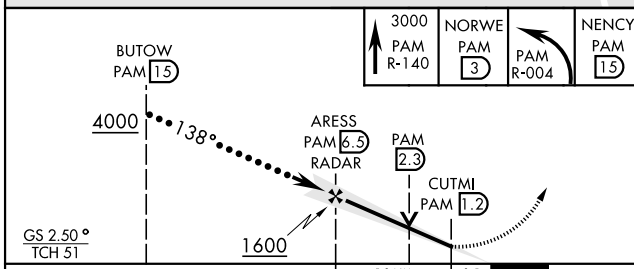
ATIS ★ 254.4	APP CON 125.2 392.1 (N abv 5000') 120.825 379.3 (N blw 5000') 124.15 338.35 (S abv 5000') 119.775 317.45 (S blw 5000')	TOWER ★ 133.95 263.15	GND CON 121.9 259.3	ASR/PAR
------------------------	--	---------------------------------	-------------------------------	---------



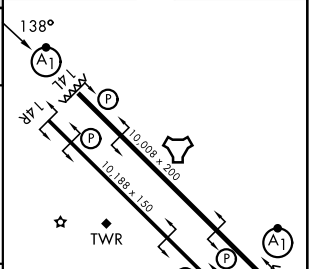
SE-3, 11 JUN 2026 to 09 JUL 2026

SE-3, 11 JUN 2026 to 09 JUL 2026

EMERG SAFE ALT 100 NM 3300



ELEV 17	TDZE 14
---------	---------



CATEGORY	C	D	E
S-ILS 14L *	214/24	200	(200-½)
S-LOC 14L **	500/50	486	(500-1)
CIRCLING	540-1½ 523 (600-1½)	580-2	563 (600-2)

Recommend Rwy 14L-32R for apch end engagement of A-Gear. HIRL all rwys

FAF to MAP 5.3 NM					
Knots	120	140	160	180	200
Min:Sec	2:39	2:16	1:59	1:46	1:35

HI-ILS Y or LOC Y RWY 14L