

# HI-ILS Y or LOC Y RWY 32R

LOC I-PAM <b>110.1</b>	APCH CRS <b>318°</b>	Rwy Ldg <b>10,008</b> TDZE <b>14</b> Arpt Elev <b>17</b>
---------------------------	-------------------------	----------------------------------------------------------------

[USAF]

TYNDALL AFB (KPAM)

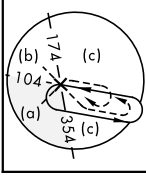
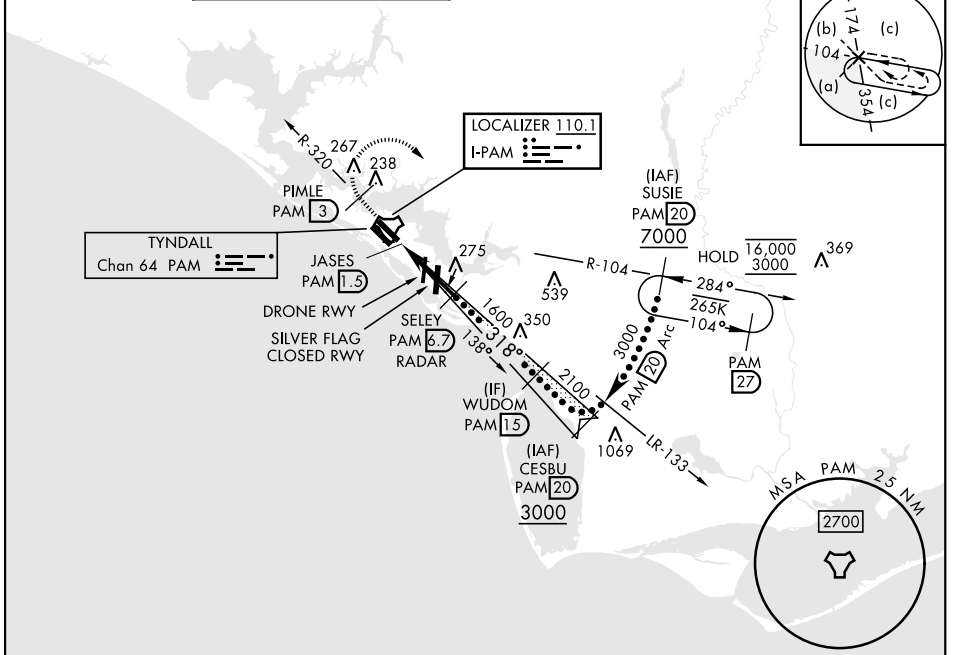
DME or RADAR required.

▼ \*When ALS inop, increase RVR to 40, vis to ¾ mile.  
\*\*When ALS inop, increase RVR to 60, vis to 1½ miles.



MISSED APPROACH: Track outbound PAM R-320 to 3 DME (PIMLE), then turn right to join PAM TACAN R-104 to 20 DME (SUSIE) and hold. Maintain 3000.

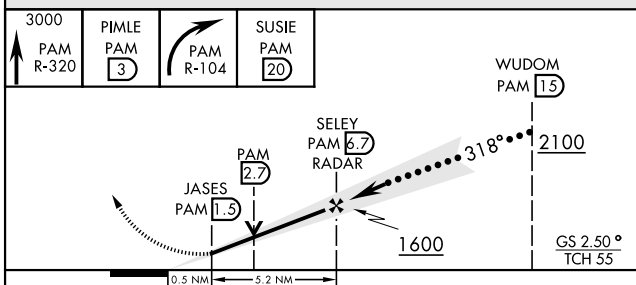
ATIS ★ <b>254.4</b>	APP CON <b>125.2 392.1</b> (N abv 5000') <b>120.825 379.3</b> (N blw 5000') <b>124.15 338.35</b> (S abv 5000') <b>119.775 317.45</b> (S blw 5000')	TOWER ★ <b>133.95 263.15</b>	GND CON <b>121.9 259.3</b>	ASR/PAR
------------------------	----------------------------------------------------------------------------------------------------------------------------------------------------------------	---------------------------------	-------------------------------	---------



SE-3, 11 JUN 2026 to 09 JUL 2026

SE-3, 11 JUN 2026 to 09 JUL 2026

EMERG SAFE ALT 100 NM 3300



ELEV 17	TDZE 14
Recommend Rwy 14L-32R for apch end engagement of A-Gear.	
HIRL all rwys	
FAF to MAP 5.2 NM	
Knots	120 140 160 180 200
Min:Sec	2:36 2:14 1:57 1:44 1:34

# HI-ILS Y or LOC Y RWY 32R