

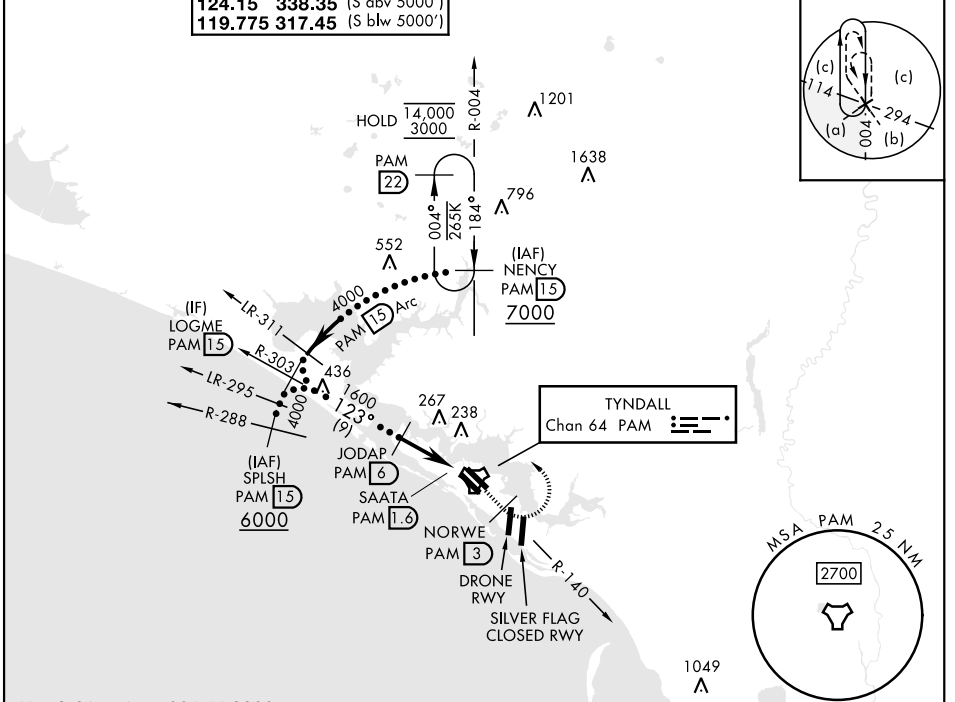
PANAMA CITY, FLORIDA

HI-TACAN Y RWY 14R

TACAN PAM Chan 64	APCH CRS 123°	Rwy Idg 10,188 TDZE 14 Arprt Elev 17	[USAF]	TYNDALL AFB (KPAM)
-----------------------------	-------------------------	---	--------	--------------------

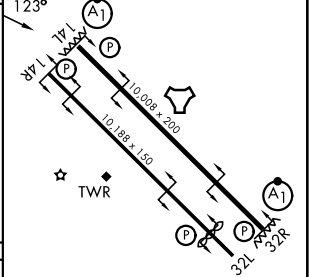
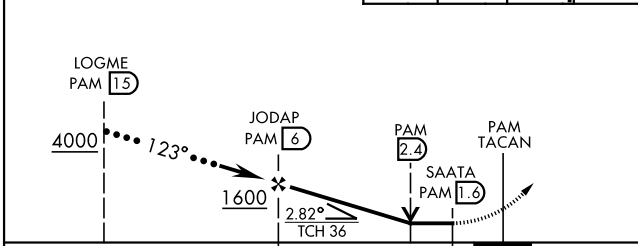
WARNING: Low TCH 36'. MISSED APPROACH: Track outbound PAM TACAN R-140 to 3 DME (NORWE), then turn left to join PAM R-004 to 15 DME (NENCY) and hold. Maintain 3000.

ATIS ★ 254.4	APP CON 125.2 392.1 (N abv 5000') 120.825 379.3 (N blw 5000') 124.15 338.35 (S abv 5000') 119.775 317.45 (S blw 5000')	TOWER ★ 133.95 263.15	GND CON 121.9 259.3	ASR/PAR
------------------------	--	---------------------------------	-------------------------------	---------



EMERG SAFE ALT 100 NM 3300

VGSI and descent angles not coincident (VGSI Angle 2.50/TCH 36).	3000 PAM R-140	NORWE PAM 3	NENCY PAM 15	ELEV 17	TDZE 14
--	----------------	-------------	--------------	---------	---------



CATEGORY	C	D	E
S-14R	480-1 $\frac{3}{8}$	465	(500-1 $\frac{3}{8}$)
CIRCLING	540-1 $\frac{1}{2}$ 523 (600-1 $\frac{1}{2}$)	580-2	563 (600-2)

Recommend Rwy 14L-32R for apch end engagement of A-Gear.
HIRL all rwys

PANAMA CITY, FLORIDA 30°04'N-85°35'W TYNDALL AFB (KPAM)

HI-TACAN Y RWY 14R



SE-3, 11 JUN 2026 to 09 JUL 2026

SE-3, 11 JUN 2026 to 09 JUL 2026