

PANAMA CITY, FLORIDA

# RNAV (GPS) RWY 14R

WAAS CH <b>71278</b> W <b>14B</b>	APCH CRS <b>138°</b>	Rwy ldg TDZE Arprt Elev	<b>10,188</b> <b>14</b> <b>17</b>
---	-------------------------	-------------------------------	---

(USAF)

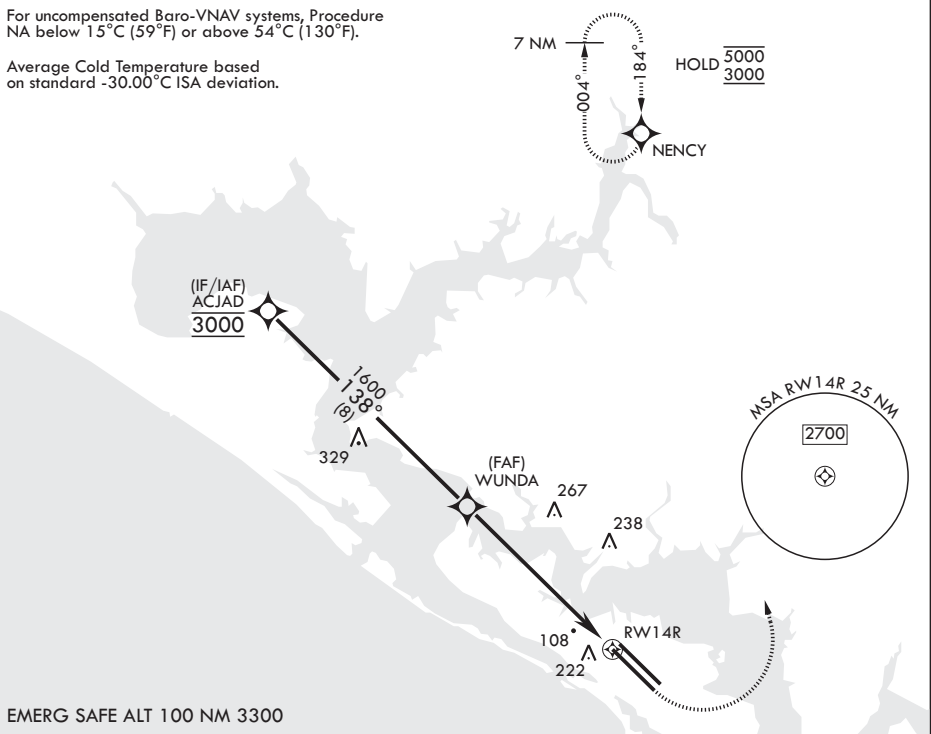
TYNDALL AFB (KPAM)

RNP APCH - GPS  
**MISSED APPROACH:** Climb to 600 then climbing left turn to 3000 direct NENCY and hold.

ATIS ★ <b>254.4</b>	APP CON/DEP CON★ <b>119.775 317.45</b> BLW 5000' <b>124.15 338.35</b> ABV 5000'	TOWER ★ <b>133.95 263.15</b>	GND CON <b>121.9 259.3</b>	ASR/PAR
------------------------	---	---------------------------------	-------------------------------	---------

For uncompensated Baro-VNAV systems, Procedure NA below 15°C (59°F) or above 54°C (130°F).

Average Cold Temperature based on standard -30.00°C ISA deviation.



SE-3, 11 JUN 2026 to 09 JUL 2026

SE-3, 11 JUN 2026 to 09 JUL 2026

EMERG SAFE ALT 100 NM 3300

ACJAD <b>3000</b>	↑ <b>600</b>	↻ <b>3000</b>	NENCY	ELEV <b>17</b>	TDZE <b>14</b>																														
GP 2.50° TCH 36	138°	WUNDA	1.7 NM to RWY 14R	138°	BCN 173																														
1600			5.8 NM	10,000 x 200	10,188 x 150																														
<table border="1"> <thead> <tr> <th>CATEGORY</th> <th>A</th> <th>B</th> <th>C</th> <th>D</th> <th>E</th> </tr> </thead> <tbody> <tr> <td>LPV DA</td> <td colspan="2">215-¾</td> <td>200</td> <td colspan="2">(200-¾)</td> </tr> <tr> <td>LNAV/VNAV DA</td> <td colspan="2">383-1</td> <td>369</td> <td colspan="2">(400-1)</td> </tr> <tr> <td>LNAV MDA</td> <td>500-1</td> <td>486 (500-1)</td> <td>500-1½</td> <td>486</td> <td>(500-1½)</td> </tr> <tr> <td>CIRCLING</td> <td>540-1</td> <td>523 (600-1)</td> <td>523 (600-1½)</td> <td>580-2</td> <td>563 (600-2)</td> </tr> </tbody> </table>						CATEGORY	A	B	C	D	E	LPV DA	215-¾		200	(200-¾)		LNAV/VNAV DA	383-1		369	(400-1)		LNAV MDA	500-1	486 (500-1)	500-1½	486	(500-1½)	CIRCLING	540-1	523 (600-1)	523 (600-1½)	580-2	563 (600-2)
CATEGORY	A	B	C	D	E																														
LPV DA	215-¾		200	(200-¾)																															
LNAV/VNAV DA	383-1		369	(400-1)																															
LNAV MDA	500-1	486 (500-1)	500-1½	486	(500-1½)																														
CIRCLING	540-1	523 (600-1)	523 (600-1½)	580-2	563 (600-2)																														
<p>HIRL all rwys                  Recommend Rwy 14L-32R for apch end engagement of A-Gear.</p>																																			

PANAMA CITY, FLORIDA

30°04'N - 85°35'W

TYNDALL AFB (KPAM)

Amdt 4 27NOV25

# RNAV (GPS) RWY 14R