

PATUXENT RIVER, MARYLAND

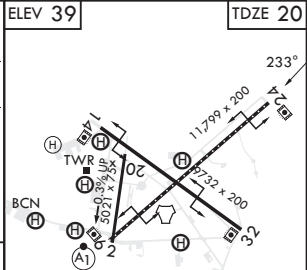
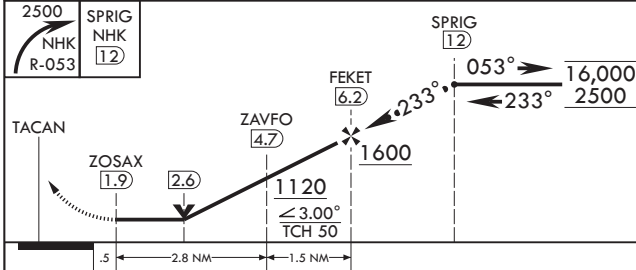
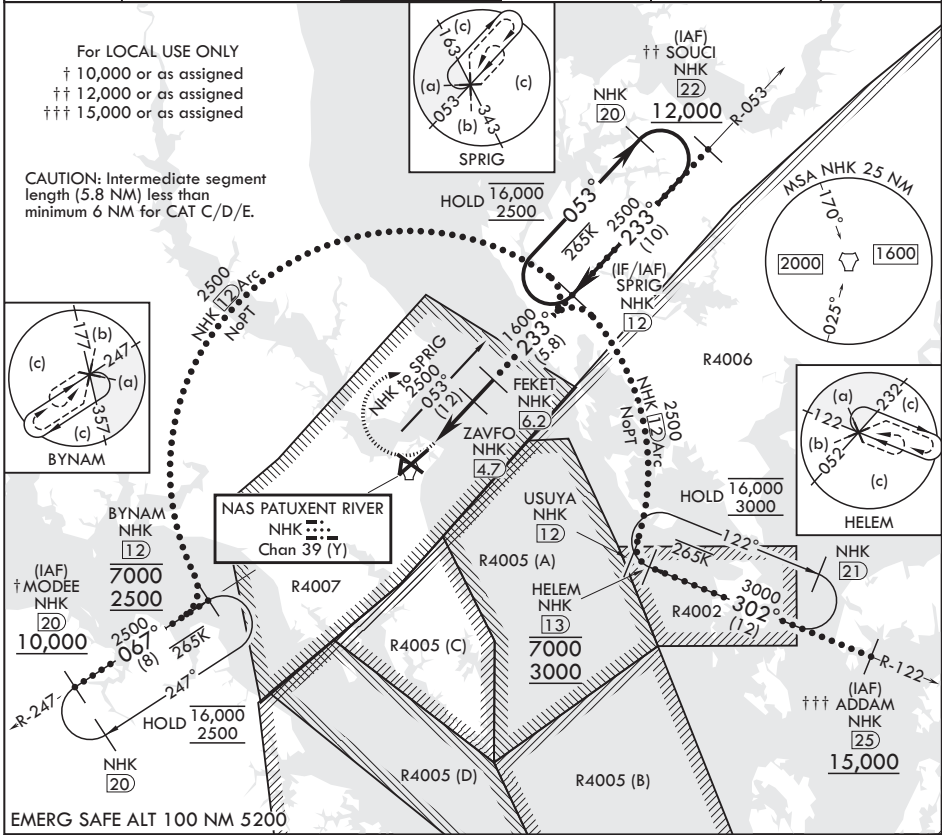
# HI-TACAN Y RWY 24

TACAN NHK Chan 39 (Y)	APCH CRS 233°	Rwy ldg TDZE 20	11,799
		Arprt Elev 39	

(USN) PATUXENT RIVER NAS (TRAPNELL FLD) (KNHK)

**▽** MISSED APPROACH: Climbing right turn to 2500 and intercept NHK TACAN R-053 to SPRIG and hold.

ATIS 322.425	APP CON/DEP CON* 121.0 250.3	TOWER 123.7 343.65	GND CON 120.6 336.4	CLNC DEL 135.2 316.125	ASR/PAR
--------------	------------------------------	--------------------	---------------------	------------------------	---------



CATEGORY	C	D	E
S-24	440-1 $\frac{1}{8}$	420	(500-1 $\frac{1}{4}$ )
CIRCLING	620-1 $\frac{1}{2}$ 581 (600-1 $\frac{1}{2}$ )	700-2 661 (700-2)	820-2 $\frac{3}{4}$ 781 (800-2 $\frac{3}{4}$ )

ELEV 39 TDZE 20

HIRL Rwy 6-24 and 14-32  
 TDZL/CL Rwy 6

PATUXENT RIVER, MARYLAND

38°17'N - 76°25'W PATUXENT RIVER NAS (TRAPNELL FLD) (KNHK)

Amdt 1 07AUG25

# HI-TACAN Y RWY 24

NE-3, 11 JUN 2026 to 09 JUL 2026

NE-3, 11 JUN 2026 to 09 JUL 2026