

PATUXENT RIVER, MARYLAND

HI-TACAN Y RWY 6

TACAN NHK Chan 39 (Y)	APCH CRS 067°	Rwy ldg TDZE 11,799 39	Arprt Elev 39
-----------------------	---------------	------------------------	---------------

(USN)

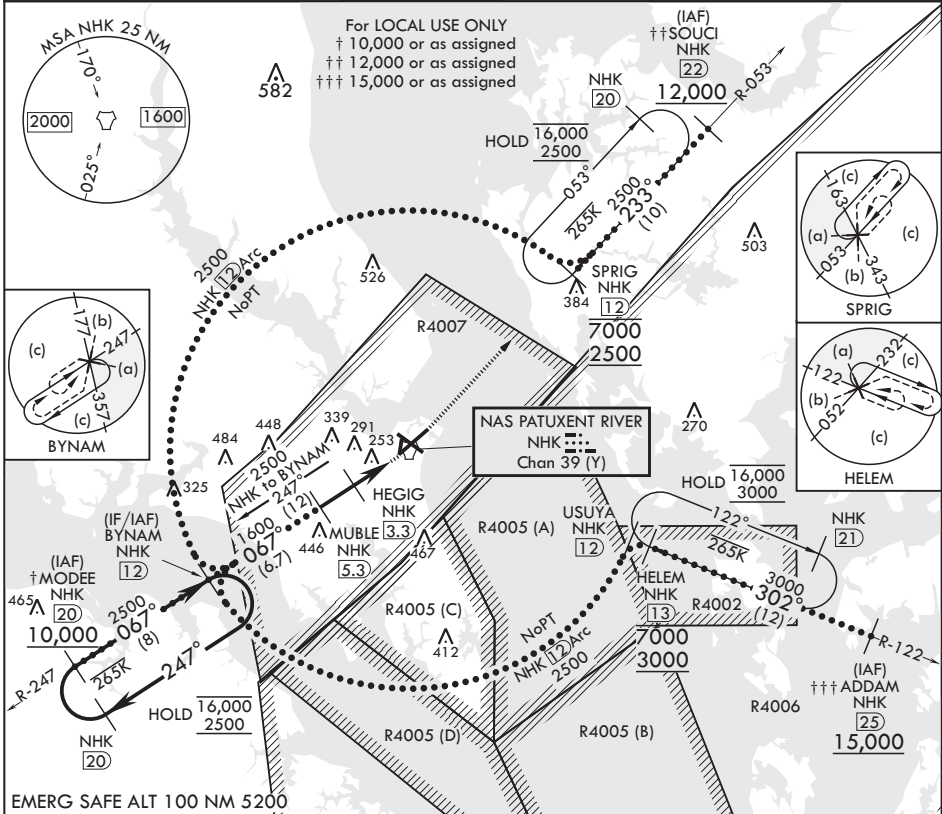
PATUXENT RIVER NAS (TRAPNELL FLD) (KNHK)

▼ * When ALS inop, increase CAT CDE vis to 1 3/8 miles.

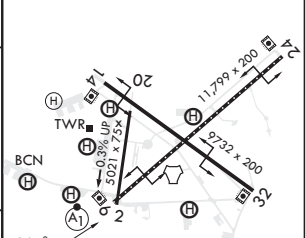
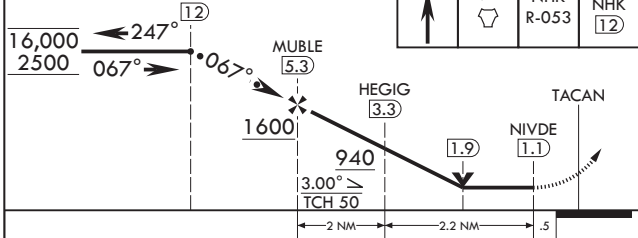
ALSF-1

MISSED APPROACH: Climb to 2500 direct NHK TACAN and intercept NHK R-053 to SPRIG and hold.

ATIS 322.425	APP CON/DEP CON* 121.0 250.3	TOWER 123.7 343.65	GND CON 120.6 336.4	CLNC DEL 135.2 316.125	ASR/PAR
--------------	------------------------------	--------------------	---------------------	------------------------	---------



BYNAM NHK 12	2500 NHK	NHK R-053	SPRIG NHK 12	ELEV 39	TDZE 39
--------------	----------	-----------	--------------	---------	---------



CATEGORY	C	D	E
S-6*	520-1	481	(500-1)
CIRCLING	620-1½ 581 (600-1½)	700-2 661 (700-2)	820-2¾ 781 (800-2¾)

HIRL Rwy 6-24 and 14-32
 TDZL/CL Rwy 6

PATUXENT RIVER, MARYLAND

38°17'N - 76°25'W PATUXENT RIVER NAS (TRAPNELL FLD) (KNHK)

Amdt 1 07AUG25

HI-TACAN Y RWY 6

NE-3, 11 JUN 2026 to 09 JUL 2026

NE-3, 11 JUN 2026 to 09 JUL 2026