

PATUXENT RIVER, MARYLAND

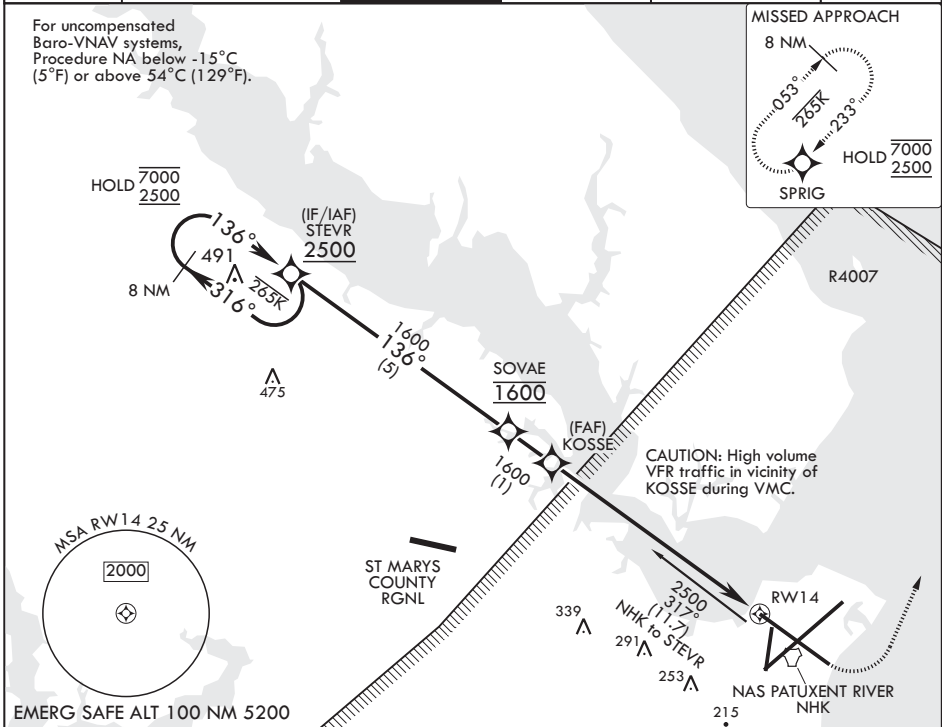
RNAV (GPS) RWY 14

WAAS CH 87821 W14A	APCH CRS 136°	Rwy ldg TDZE 27	9732
		Arpt Elev	39

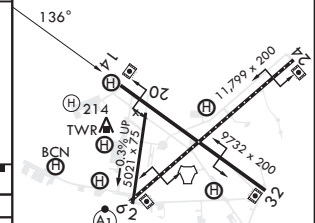
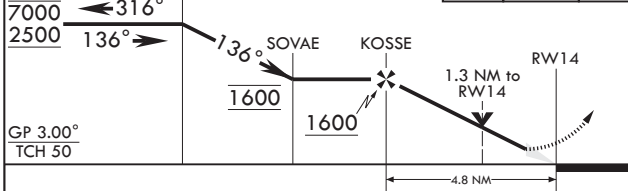
(USN) PATUXENT RIVER NAS (TRAPNELL FLD) (KNHK)

RNP APCH-GPS	MISSED APPROACH: Climb to 600, then climbing left turn to 2500 direct SPRIG and hold.
RADAR required	

ATIS 322.425	APP CON/DEP CON* 121.0 250.3	TOWER 123.7 343.65	GND CON 120.6 336.4	CLNC DEL 135.2 316.125	ASR/PAR
------------------------	--	------------------------------	-------------------------------	----------------------------------	---------



8 NM Holding Pattern	600	2500	SPRIG	ELEV 39	TDZE 27
----------------------	-----	------	-------	---------	---------



CATEGORY	A	B	C	D	E
LPV DA	227-¾		200	(200-¾)	
LNAV/VNAV DA	379-1 352 (400-1)	390-1 363 (400-1)	398-1 371 (400-1)	409-1½ 382 (400-1½)	
LNAV MDA	500-1 473 (500-1)		500-1½ 473 (500-1½)		
CIRCLING	520-1 481 (500-1)	560-1 521 (600-1)	620-1½ 581 (600-1½)	700-2 661 (700-2)	820-2¾ 781 (800-2¾)

HIRL Rwy 6-24 and 14-32
TDZL/CL Rwy 6

PATUXENT RIVER, MARYLAND

38°17'N - 76°25'W PATUXENT RIVER NAS (TRAPNELL FLD) (KNHK)

Amdt 4 07AUG25

RNAV (GPS) RWY 14

NE-3, 11 JUN 2026 to 09 JUL 2026