

PATUXENT RIVER, MARYLAND

RNAV (GPS) RWY 24

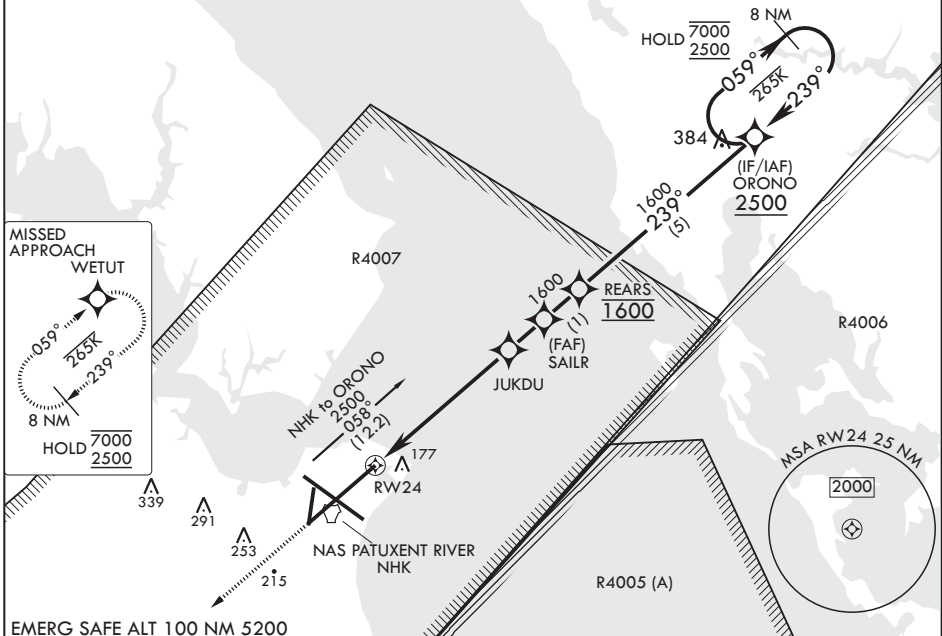
WAAS CH 72589 W24A	APCH CRS 239°	Rwy ldg TDZE Arpt Elev	11,799 20 39
--------------------------	------------------	------------------------------	--------------------

(USN) PATUXENT RIVER NAS (TRAPNELL FLD) (KNHK)

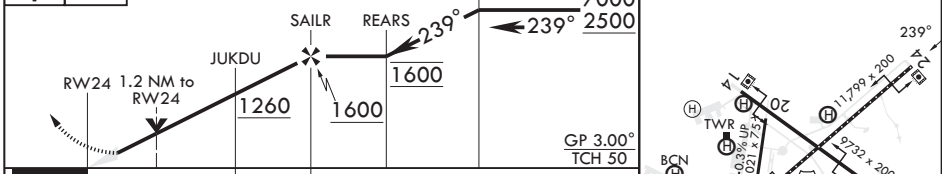
RNP APCH-GPS MISSED APPROACH: Climb to 2500 direct WETUT and hold.

ATIS 322.425	APP CON/DEP CON* 121.0 250.3	TOWER 123.7 343.65	GND CON 120.6 336.4	CLNC DEL 135.2 316.125	ASR/PAR
-----------------	---------------------------------	-----------------------	------------------------	---------------------------	---------

For uncompensated BARO VNAV systems, LNAV/VNAV NA below -15°C (5°F) or above 54°C (129°F).



EMERG SAFE ALT 100 NM 5200



CATEGORY	A	B	C	D	E
LPV DA	220-3/4		200	(200-3/4)	
LNAV/VNAV DA	308-7/8 288 (300-7/8)	319-7/8 299 (300-7/8)	327-7/8 307 (300-7/8)	338-7/8 318 (300-7/8)	
LNAV MDA	440-1	420 (500-1)	440-1 1/2	420	(500-1 1/2)
CIRCLING	520-1 481 (500-1)	560-1 521 (600-1)	620-1 1/2 581 (600-1 1/2)	700-2 661 (700-2)	820-2 1/4 781 (800-2 1/4)

HIRL Rlys 6-24 and 14-32 TDZL/CL Rwy 6

PATUXENT RIVER, MARYLAND

38°17'N - 76°25'W PATUXENT RIVER NAS (TRAPNELL FLD) (KNHK)

Amdt 4 07AUG25

RNAV (GPS) RWY 24

NE-3, 11 JUN 2026 to 09 JUL 2026

NE-3, 11 JUN 2026 to 09 JUL 2026