

PATUXENT RIVER, MARYLAND

# RNAV (GPS) RWY 32

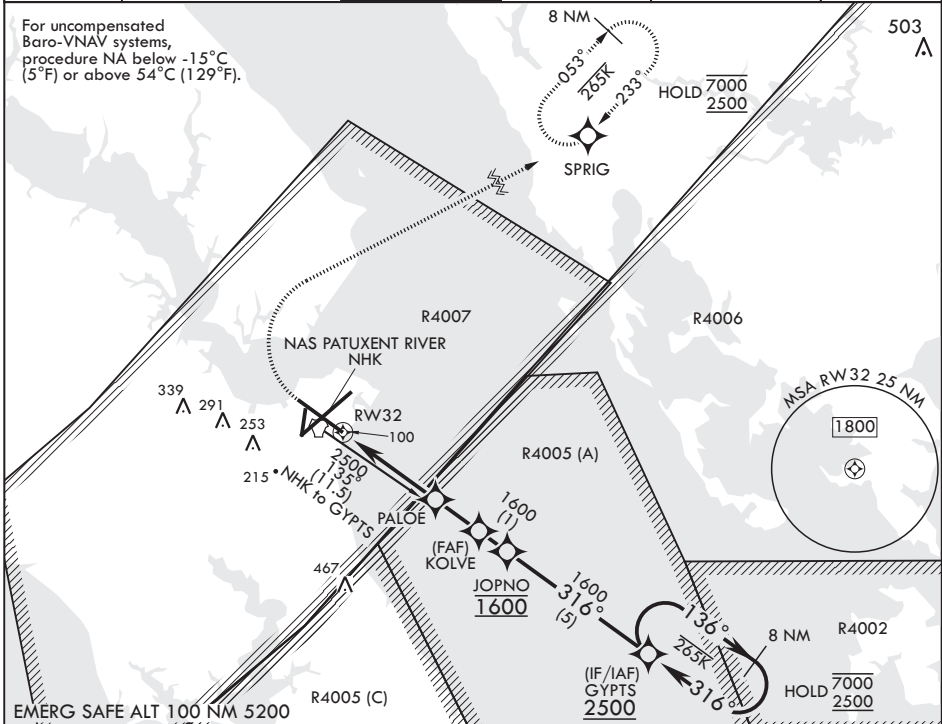
WAAS CH <b>66540</b> W32A	APCH CRS <b>316°</b>	Rwy ldg TDZE Arpt Elev	<b>9732</b> <b>18</b> <b>39</b>
---------------------------------	-------------------------	------------------------------	---------------------------------------

(USN) PATUXENT RIVER NAS (TRAPNELL FLD) (KNHK)

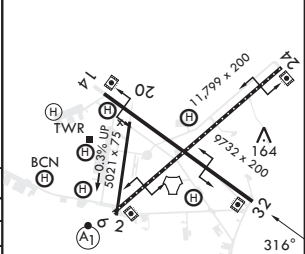
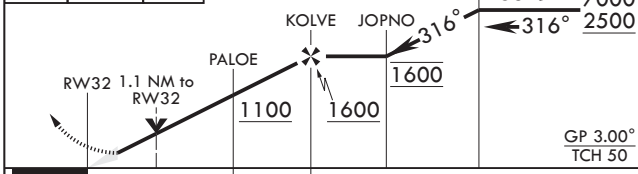
RNP APCH-GPS	MISSED APPROACH: Climb to 600, then climbing right turn to 2500 direct SPRIG and hold.
--------------	--

ATIS <b>322.425</b>	APP CON/DEP CON* <b>121.0 250.3</b>	TOWER <b>123.7 343.65</b>	GND CON <b>120.6 336.4</b>	CLNC DEL <b>135.2 316.125</b>	ASR/PAR
------------------------	--	------------------------------	-------------------------------	----------------------------------	---------

For uncompensated Baro-VNAV systems, procedure NA below -15°C (5°F) or above 54°C (129°F).



600	2500	SPRIG	ELEV 39	TDZE 18
-----	------	-------	---------	---------



CATEGORY	A	B	C	D	E
LPV DA	221-3/4		203	(200-3/4)	
LNAV/VNAV DA	295-7/8 277 (300-7/8)	306-7/8 288 (300-7/8)	314-7/8 296 (300-7/8)	325-7/8	307 (300-7/8)
LNAV MDA	420-1	402 (400-1)	420-1 1/8	402	(400-1 1/8)
CIRCLING	520-1 481 (500-1)	560-1 521 (600-1)	620-1 1/2 581 (600-1 1/2)	700-2 661 (700-2)	820-2 3/4 781 (800-2 3/4)

HIRL Rws 6-24 and 14-32  
TDZL/CL Rwy 6

PATUXENT RIVER, MARYLAND  
Amdt 5 07AUG25

38°17'N - 76°25'W PATUXENT RIVER NAS (TRAPNELL FLD) (KNHK)

# RNAV (GPS) RWY 32

NE-3, 11 JUN 2026 to 09 JUL 2026

NE-3, 11 JUN 2026 to 09 JUL 2026