

PATUXENT RIVER, MARYLAND

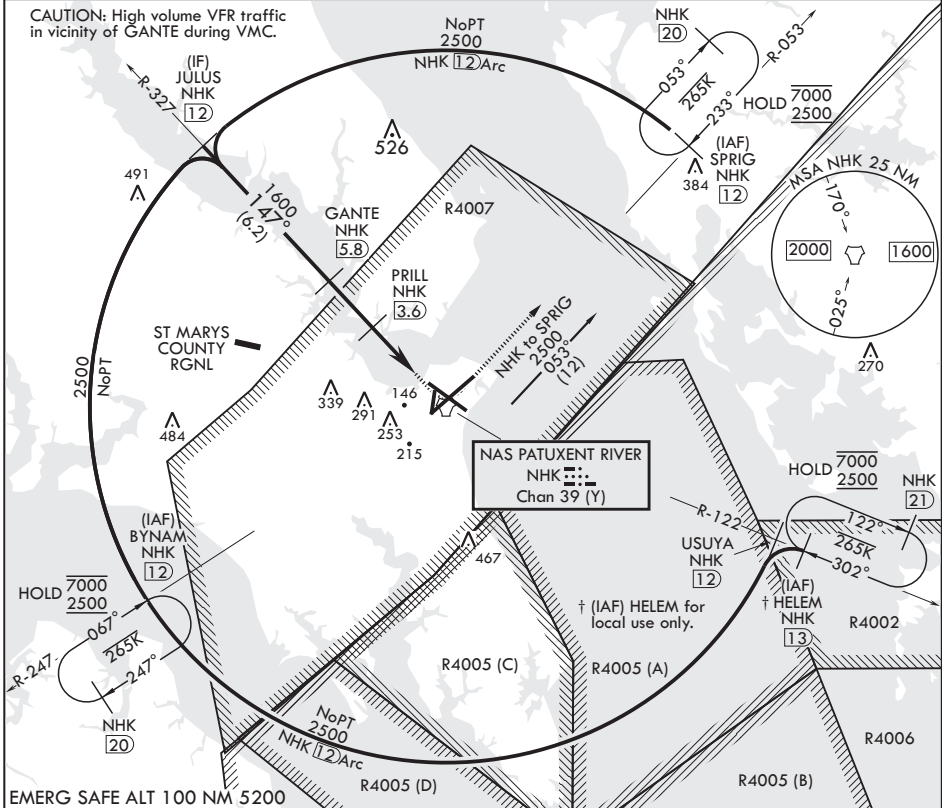
TACAN Z RWY 14

TACAN NHK Chan 39 (Y)	APCH CRS 147°	Rwy ldg TDZE 27	Arprt Elev 39
-----------------------	---------------	-----------------	---------------

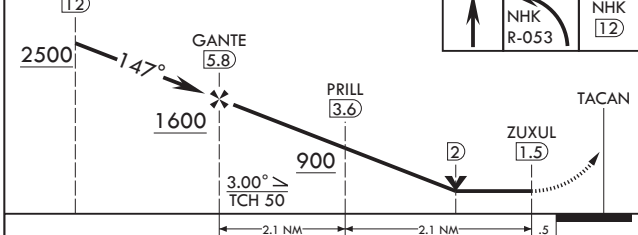
(USN) PATUXENT RIVER NAS (TRAPNELL FLD) (KNHK)

MISSED APPROACH: Climb to 500, then climbing left turn to 2500 on NHK TACAN R-053 to SPRIG and hold.

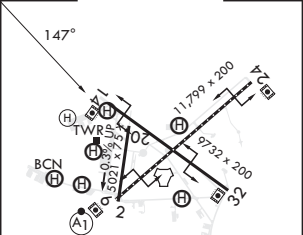
ATIS 322.425	APP CON/DEP CON* 121.0 250.3	TOWER 123.7 343.65	GND CON 120.6 336.4	CLNC DEL 135.2 316.125	ASR/PAR
--------------	------------------------------	--------------------	---------------------	------------------------	---------



EMERG SAFE ALT 100 NM 5200



ELEV 39 TDZE 27



CATEGORY	A	B	C	D	E
S-14	400-1		373	(400-1)	
CIRCLING	520-1 481 (500-1)	560-1 521 (600-1)	620-1½ 581 (600-1½)	700-2 661 (700-2)	820-2¾ 781 (800-2¾)

HIRL Rws 6-24 and 14-32 TDZL/CL Rwy 6

PATUXENT RIVER, MARYLAND

38°17'N - 76°25'W PATUXENT RIVER NAS (TRAPNELL FLD) (KNHK)

Amdt 1 07AUG25

TACAN Z RWY 14

NE-3, 11 JUN 2026 to 09 JUL 2026

NE-3, 11 JUN 2026 to 09 JUL 2026