

ARLIN FOUR ARRIVAL

AL-322 (FAA)

PHOENIX, ARIZONA

SW-4, 11 JUN 2026 to 09 JUL 2020

ARRIVAL ROUTE DESCRIPTION

BLYTE TRANSITION (BLH.AR1IN4): From over BLH VORTAC on BLH R-089 and IWA R-256 to ARLIN INT. Thence. . . .
MOHAK TRANSITION (MOHAK.AR1IN4): From over MOHAK INT on GBN R-247 and BXK R-215 to HYDRR INT, then on IWA R-256 to ARLIN INT. Thence. . . .

PHOENIX SKY HARBOR INTL: Rwy 7L/R or 8: From over ARLIN, Expect vectors to final approach course; Rwy 25L/R or 26: From over ARLIN, on IWA R-256 to TUKEE. Expect vectors to final approach course prior to TUKEE.
SATELLITE AIRPORTS: Expect vectors after passing SCOLE or JUDTH.

LOST COMMUNICATIONS: After ARLIN, on IWA R-256 and PXR R-143 to PXR VORTAC.

NOTE: BLYTHE Transition for turbojet aircraft FL240 and above.
Turboprop aircraft plan BLYTHE ARRIVAL at or below FL230.
NOTE: MOHAK Transition for turbojet and turboprop aircraft.
NOTE: Turboprops landing KPHX expect vectors after passing SCOLE or JUDTH.

SCOLE

VERTICAL NAVIGATION PLANNING INFORMATION

FL180 089° (35)
Expect FL250

FL1000 089° (48)
Expect FL250

FL1000 076° (75) (4)

FL1000 076° (111)

FL1000 256° (8)

FL1000 215° (71) (111)

FL1000 142° (121)

FL1000 067° (66) (15)

FL1000 067° (115)

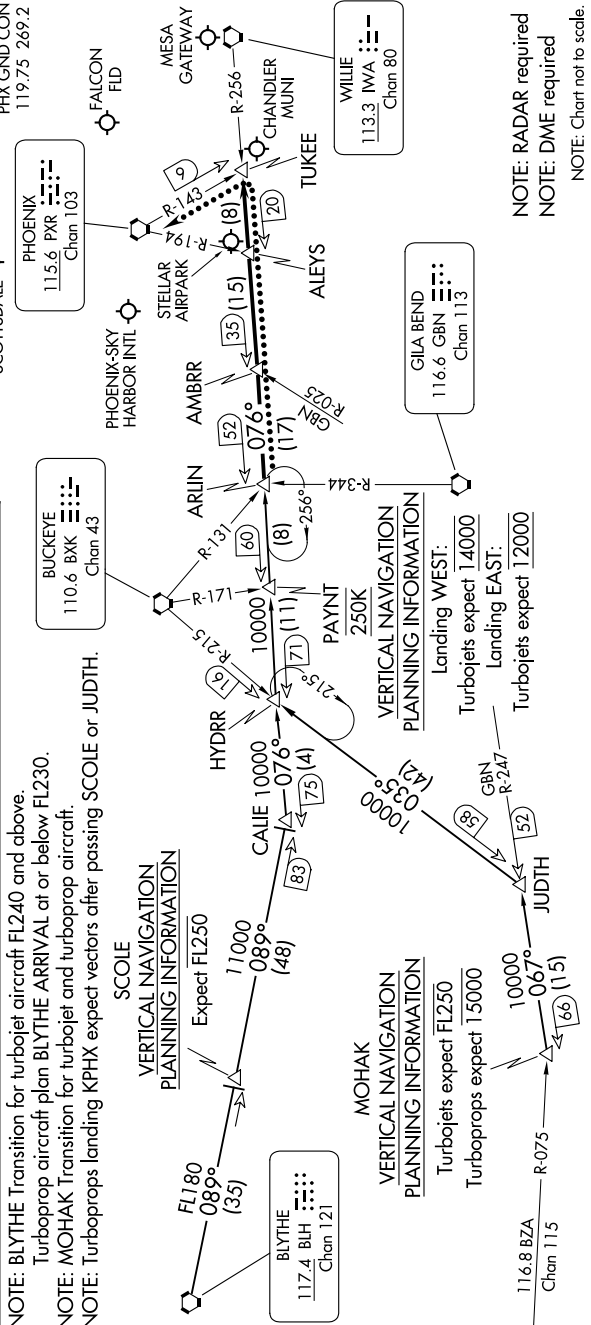
FL1000 067° (115)

FL1000 067° (115)

FL1000 067° (115)



- PHOENIX APP CON 124.1 256.9
- CHD ATIS 128.325
- FEZ ATIS 118.25
- DVT ATIS 126.5
- IWA ATIS 133.5 270.275
- PHX D-ATIS 127.575
- SDL ATIS 118.6
- PHOENIX TOWER 118.7 278.8 (Rwy 8-26)
- PHOENIX TOWER 120.9 254.3 (Rwy 7L-29R, 7R-25L)
- PHX GND CON 119.75 269.2
- PHOENIX-DEER VALLEY
- SCOTTSDALE
- PHOENIX PXR 115.6 PXR Chan 103
- PHOENIX-SKY HARBOR INTL.
- FALCON FLD
- MESA GATEWAY
- CHANDLER MUNI
- TUKEE
- WILIE 113.3 IWA Chan 80
- GILA BEND 116.6 GBN Chan 113



NOTE: RADAR required
NOTE: DME required
NOTE: Chart not to scale.

ARLIN FOUR ARRIVAL

PHOENIX, ARIZONA

SW-4, 11 JUN 2026 to 09 JUL 2026