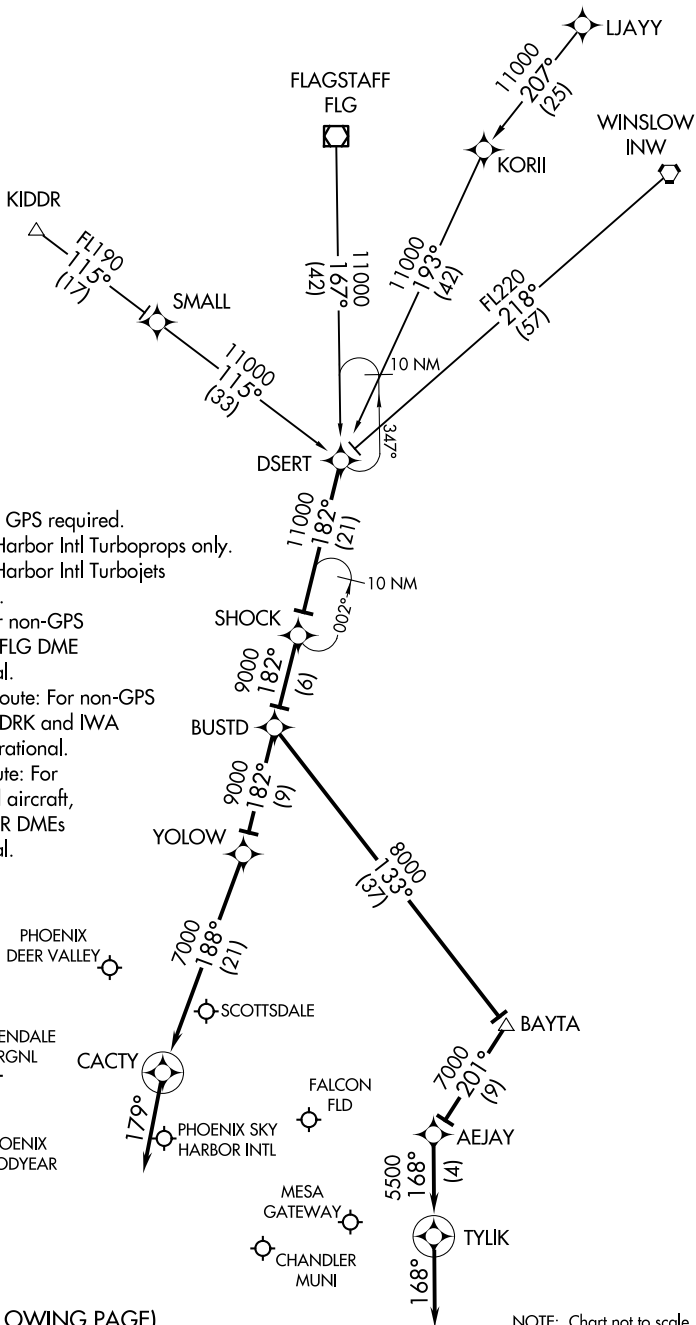


PHOENIX APP CON
 120.7 239.0
 CHD ATIS
 128.325
 DVT ATIS
 126.5
 FFZ ATIS
 118.25
 GEU ATIS
 119.425
 GYR ATIS
 118.35
 IWA ATIS
 133.5 270.275
 PHX D-ATIS
 127.575
 SDL ATIS
 118.6
 GATEWAY TOWER ★
 120.6 289.4

- NOTE: RADAR required.
- NOTE: RNAV 1.
- NOTE: DME/DME/IRU or GPS required.
- NOTE: Landing PHX Sky Harbor Intl Turboprops only.
- NOTE: Landing PHX Sky Harbor Intl Turbojets ATC assigned only.
- NOTE: FLG Transition: For non-GPS equipped aircraft, FLG DME must be operational.
- NOTE: DSERT to CACTY route: For non-GPS equipped aircraft, DRK and IWA DMEs must be operational.
- NOTE: DSERT to TYLIK route: For non-GPS equipped aircraft, DRK, IWA, and PXR DMEs must be operational.



(CONTINUED ON FOLLOWING PAGE)

NOTE: Chart not to scale.

SW-4, 11 JUN 2026 to 09 JUL 2026

SW-4, 11 JUN 2026 to 09 JUL 2026