

HI-ILS or LOC Y RWY 30

LOC I-BRN 111.7	APCH CRS 302°	Rwy Idg 13,510 TDZE 2996 Arpt Elev 2996
---------------------------	-------------------------	--

[USAF]

MOUNTAIN HOME AFB (KMUO)

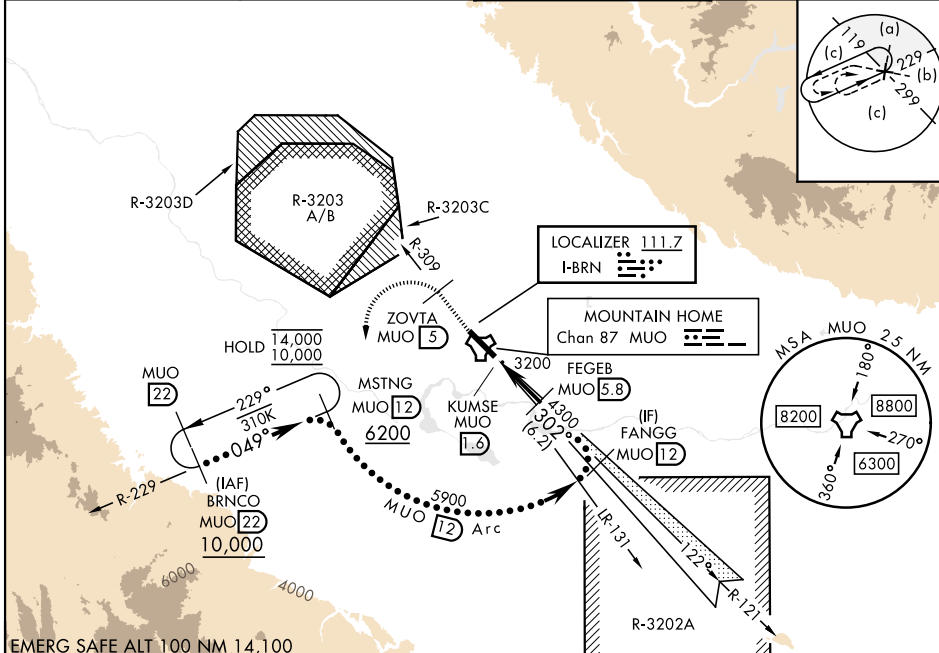
RADAR or DME required

▼ * When ALS inop, increase CAT CDE RVR to 40 and vis to 3/4 mile.
 ** When ALS inop, increase CAT CDE vis to 1 1/2 miles.
 *** Circling not authorized NE of Rwy 12-30.



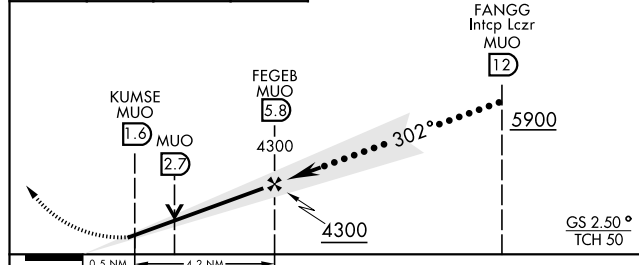
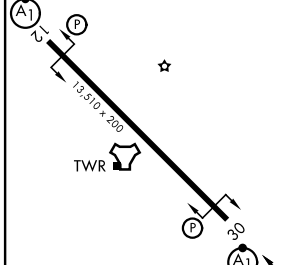
MISSED APPROACH: Climb to 10,000 on MUO TACAN R-309 to ZOVTA/5 DME, and then turn left on heading 169° to intercept MUO R-229 to MSTNG/12 DME and hold, continue climb in hold to 10,000.

ATIS 273.5	APP CON 124.8 259.1	TOWER 133.85 253.5	GND CON 120.5 275.8
----------------------	-------------------------------	------------------------------	-------------------------------



EMERG SAFE ALT 100 NM 14,100

ELEV 2996	TDZE 2996	10,000 MUO R-309	ZOVTA MUO 5	MUO R-229	MSTNG MUO 12	VGSI and ILS glidepath not coincident (VGSI Angle 2.50/TCH 40).
-----------	-----------	------------------	-------------	-----------	--------------	---



CATEGORY		C	D	E
S-ILS 30 *		3196/24	200	(200-1/2)
S-LOC 30 **		3480/50	484	(500-1)
CIRCLING ***		3520-1 1/2 524 (600-1 1/2)	3560-2 564 (600-2)	3700-2 1/2 704 (800-2 1/2)

HIRL Rwy 12-30					
FAF to MAP 4.2 NM					
Knots	120	140	160	180	200
Min:Sec	2:06	1:48	1:35	1:24	1:16

HI-ILS or LOC Y RWY 30

NW-1, 11 JUN 2026 to 09 JUL 2026

NW-1, 11 JUN 2026 to 09 JUL 2026