

ILS or LOC Z RWY 12

LOC I-MUO 110.3	APCH CRS 122°	Rwy Idg 13,510 TDZE 2986 Arprt Elev 2996
---------------------------	-------------------------	---

[USAF]

MOUNTAIN HOME AFB (KMUO)

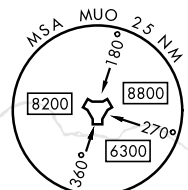
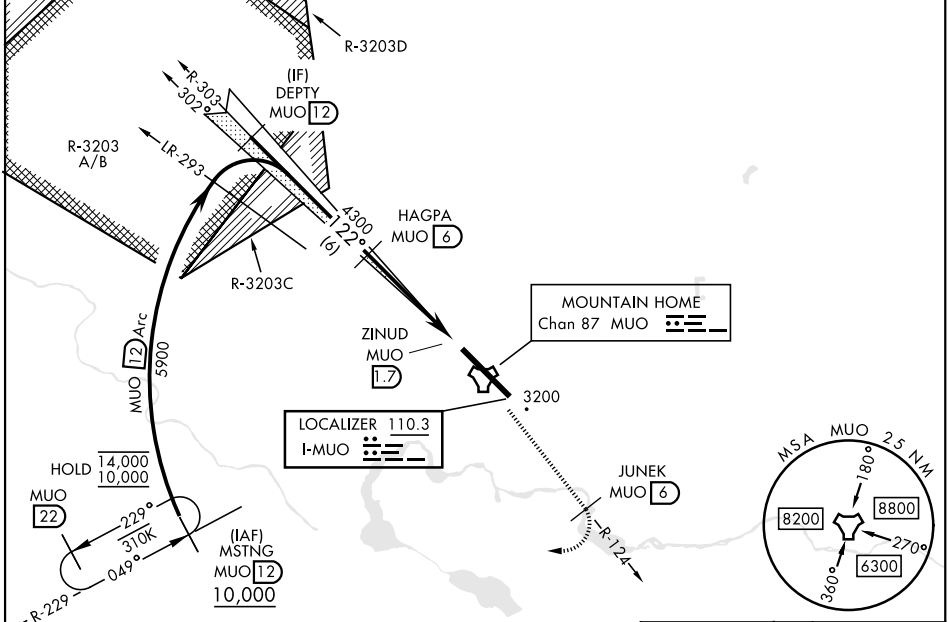
RADAR or DME required

▼ * When ALS inop, increase RVR to 40, vis to 3/4 mile.
 ** When ALS inop, increase CAT AB RVR to 55 and vis to 1 mile, CAT CDE vis to 1 3/8 miles.
 *** Circling not authorized NE of Rwy 12-30.

ALS F-1

MISSED APPROACH: Climb to 10,000 on MUO TACAN R-124 to JUNEK/6 DME, then turn right on heading 289° to intercept MUO R-229 to MSTNG/12 DME and hold. Continue climb in hold to 10,000.

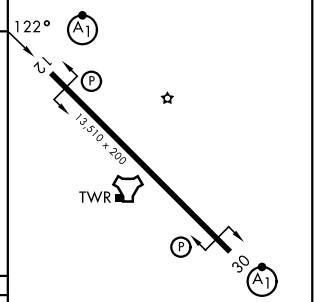
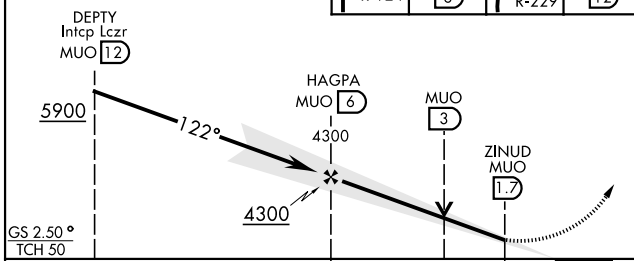
ATIS 273.5	APP CON 124.8 259.1	TOWER 133.85 253.5	GND CON 120.5 275.8
----------------------	-------------------------------	------------------------------	-------------------------------



EMERG SAFE ALT 100 NM 14,100

ELEV 2996	TDZE 2986
-----------	-----------

VGSI and ILS glidepath not coincident (VGSI Angle 2.50/TCH 41).



CATEGORY	A	B	C	D	E
S-ILS 12 *	3186/24		200	(200-1/2)	
S-LOC 12 **	3500/24	514 (600-1/2)	3500/55	514	(600-1)
CIRCLING ***	3520-1	524 (600-1)	3520-1 1/2 524 (600-1 1/2)	3560-2 564 (600-2)	3700-2 1/2 704 (800-2 1/2)

HIRL Rwy 12-30

FAF to MAP 4.3 NM

Knots	60	90	120	150	180
Min:Sec	4:18	2:52	2:09	1:43	1:26

ILS or LOC Z RWY 12

NW-1, 11 JUN 2026 to 09 JUL 2026

NW-1, 11 JUN 2026 to 09 JUL 2026