

# TACAN Z RWY 12

MOUNTAIN HOME AFB (KMUO)

TACAN MUO Chan <b>87</b>	APCH CRS <b>129°</b>	Rwy Idg <b>13,510</b> TDZE <b>2986</b> Arprt Elev <b>2996</b>
--------------------------	----------------------	---

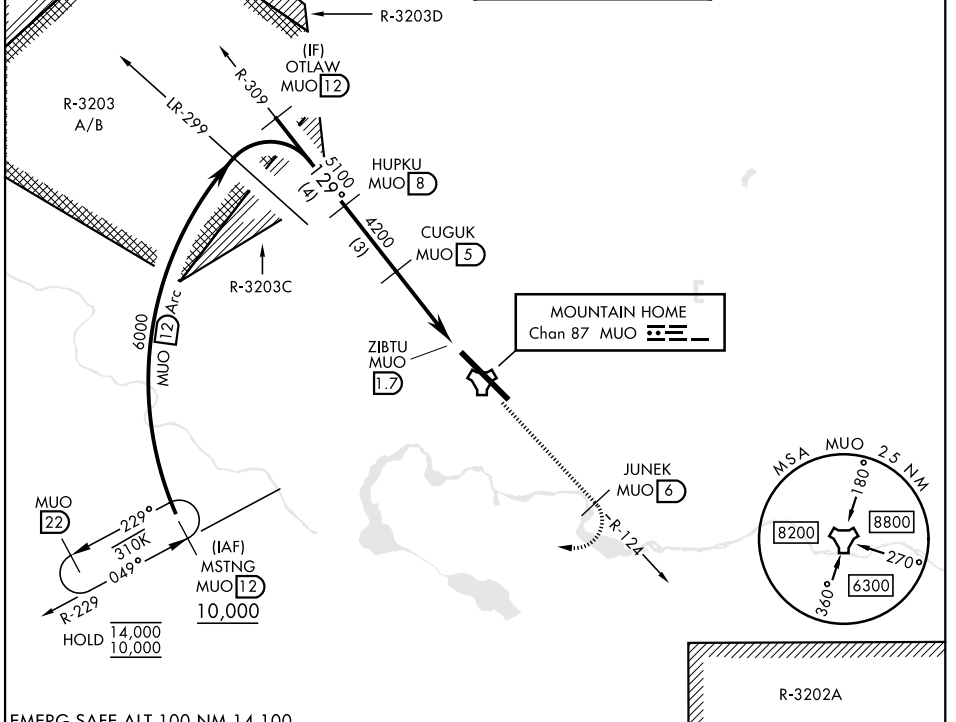
[USAF]

▼ \* When ALS inop, increase CAT AB RVR to 55 and vis to 1 mile, CAT CDE vis to 1½ miles.  
 \*\* Circling not authorized NE of Rwy 12-30.
 

 ALSF-1 

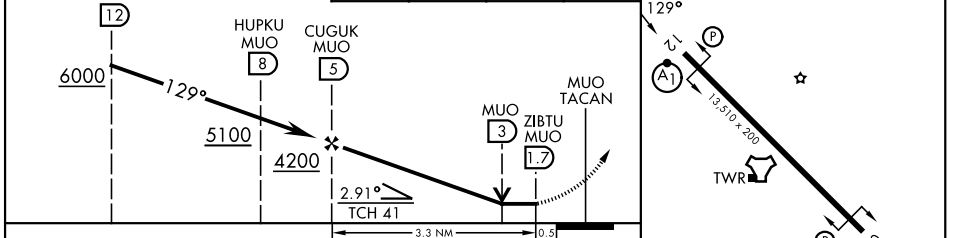
 MISSED APPROACH: Climb to 10,000 on MUO TACAN R-124 to JUNEK/6 DME, then turn right on heading 289° to intercept MUO R-229 to MSTNG/12 DME and hold. Continue climb in hold to 10,000.

ATIS <b>273.5</b>	APP CON <b>124.8 259.1</b>	TOWER <b>133.85 253.5</b>	GND CON <b>120.5 275.8</b>
----------------------	-------------------------------	------------------------------	-------------------------------



EMERG SAFE ALT 100 NM 14,100

VGSI and descent angles not coincident (VGSI Angle 2.50/TCH 41).	10,000 MUO R-124	JUNEK MUO <b>6</b>	MUO R-229	MSTNG MUO <b>12</b>	ELEV 2996	TDZE 2986
--	---------------------	--------------------	-----------	---------------------	-----------	-----------



CATEGORY	A	B	C	D	E
S-12 *	3520/24 534 (600-½)		3520/55 534 (600-1)		
CIRCLING **	3520-1 524 (600-1)		3520-1½ 524 (600-1½)	3560-2 564 (600-2)	3700-2½ 704 (800-2½)

HIRL Rwy 12-30

# TACAN Z RWY 12

NW-1, 11 JUN 2026 to 09 JUL 2026

NW-1, 11 JUN 2026 to 09 JUL 2026