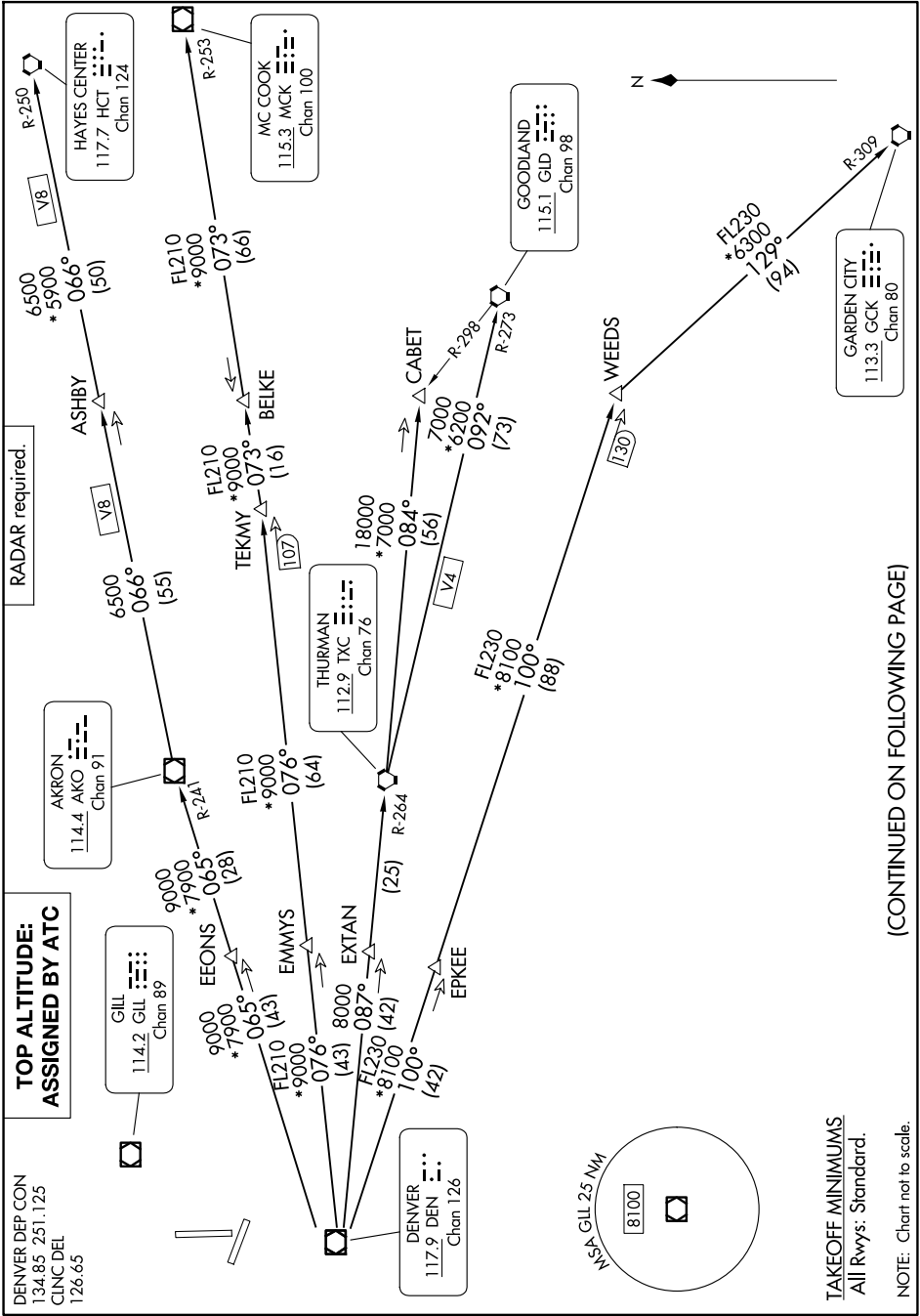


PLAINS TWO DEPARTURE

AL-325 (FAA)

GREELEY-WELD COUNTY (GXY)
GREELEY, COLORADO

8200 JUN 60 to 2026 JUN 11, 1-MS



(CONTINUED ON FOLLOWING PAGE)

SW-1, 11 JUN 2026 to 09 JUL 2026

PLAINS TWO DEPARTURE

GREELEY, COLORADO
GREELEY-WELD COUNTY (GXY)