

SKYEE ONE DEPARTURE (RNAV)

AL-325 (FAA)

**TOP ALTITUDE:
FL230**

CLNC DEL
126.65
DENVER DEP CON
134.85 251.125

TAKEOFF MINIMUMS

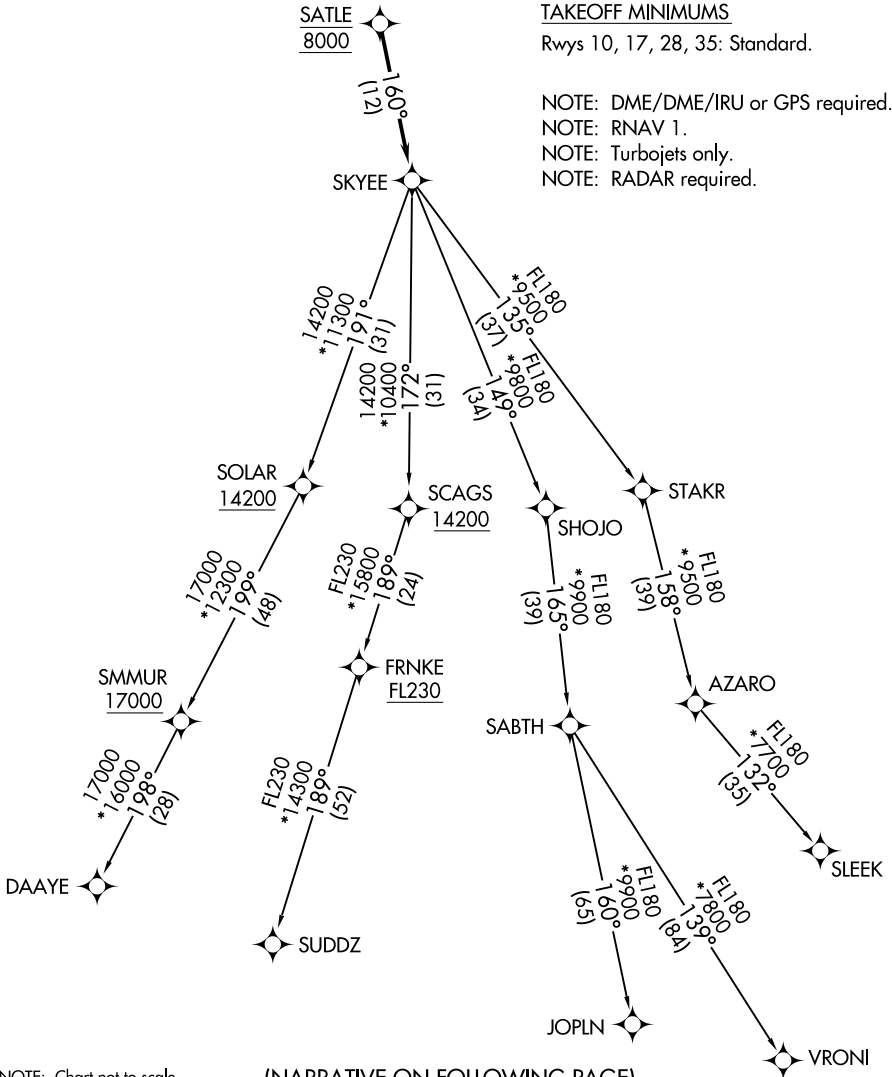
Rwys 10, 17, 28, 35: Standard.

NOTE: DME/DME/IRU or GPS required.

NOTE: RNAV 1.

NOTE: Turbojets only.

NOTE: RADAR required.



SW-1, 11 JUN 2026 to 09 JUL 2026

SW-1, 11 JUN 2026 to 09 JUL 2026

NOTE: Chart not to scale.

(NARRATIVE ON FOLLOWING PAGE)

SKYEE ONE DEPARTURE (RNAV)