

VOR/DME PIH 112.6 Chan 73	APP CRS 033°	Rwy Ldg 9059 TDZE 4444 Apt Elev 4452
--	------------------------	---

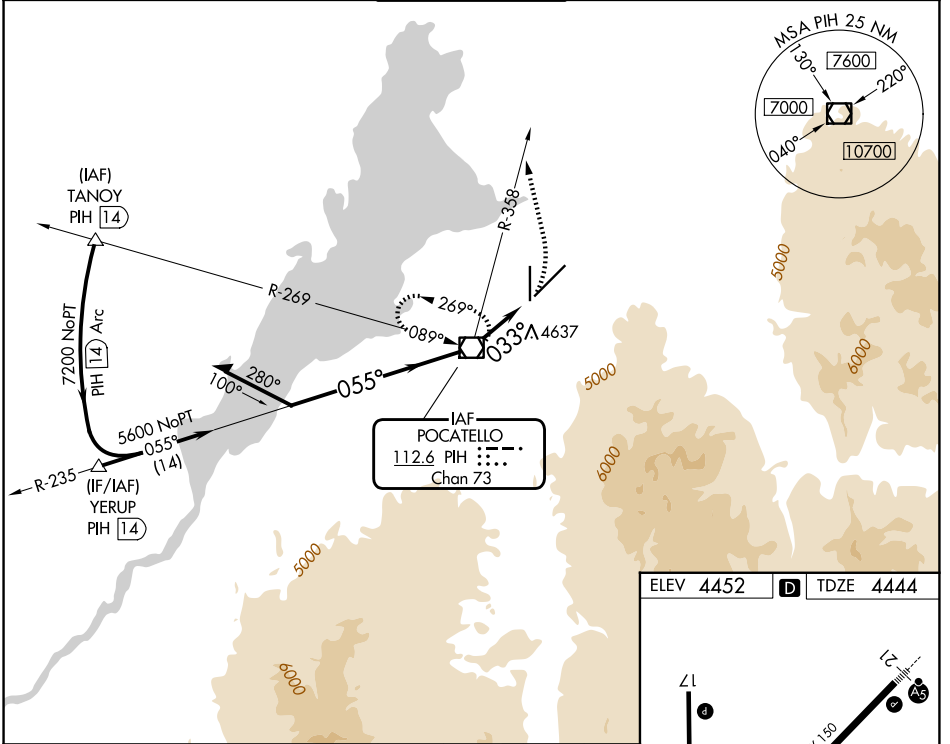
VOR RWY 3

POCATELLO RGNL (PIH)

⚠ Circling to Rwy 35 NA at night. When VGSI inop, Straight-In/Circling Rwy 3 procedure NA at night. Circling NA southeast of Rwy 3-21. Visibility reduction by helicopters NA. When local altimeter setting not received, use Idaho Falls altimeter setting and increase all MDA 140 feet, and increase visibility S-3 Cat C ½ mile and Circling Cat C ¼ mile.

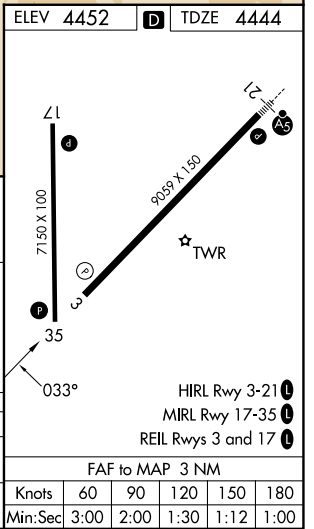
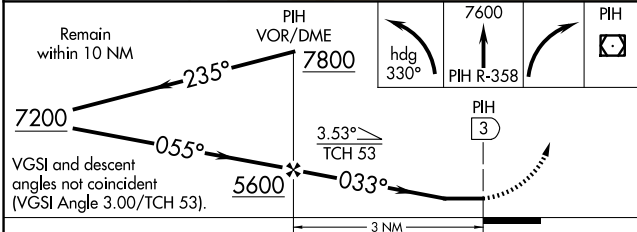
MISSED APPROACH: Climbing left turn on heading 330° and PIH VOR/DME R-358 to 7600 then right turn direct PIH VOR/DME and hold.

ATIS 135.625	SALT LAKE CENTER 128.35 239.25	POCATELLO TOWER* 119.1 (CTAF) 0 257.8	GND CON 121.9	UNICOM 122.95
------------------------	--	---	-------------------------	-------------------------



NW-1, 11 JUN 2026 to 09 JUL 2026

NW-1, 11 JUN 2026 to 09 JUL 2026



CATEGORY	A	B	C	D
S-3	4940-1	496 (500-1)	4940-1 3/8 496 (500-1 3/8)	NA
CIRCLING	5000-1 548 (600-1)	5020-1 568 (600-1)	5060-1 3/4 608 (700-1 3/4)	NA