

WAAS CH 87012 W01A	APP CRS 003°	Rwy Ldg TDZE Apt Elev	7441 479 534
--	------------------------	-----------------------------	---

RNAV (GPS) RWY 1

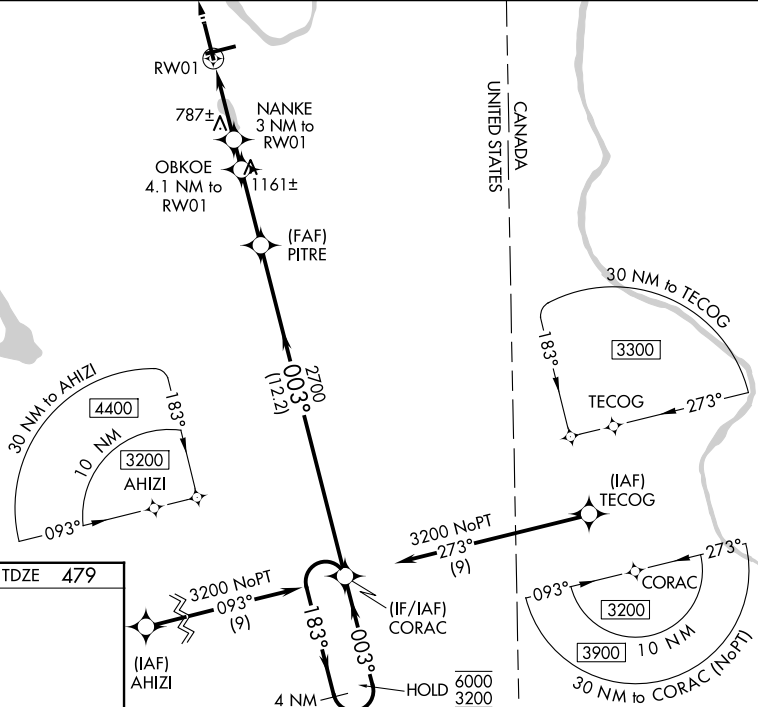
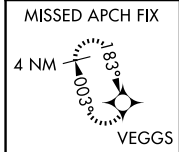
PRESQUE ISLE INTL (PQI)

RNP APCH - GPS.

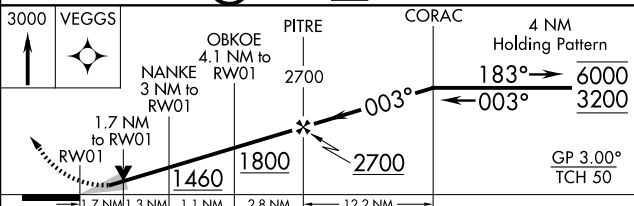
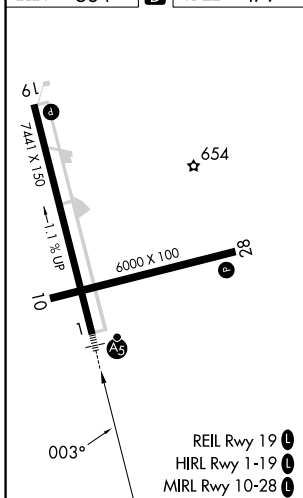
⚠ For uncompensated Baro-VNAV systems, LNAV/VNAV NA below -16°C or above 54°C. For inop ALS, increase LNAV/VNAV all Cats visibility to 1½ SM and LNAV Cats C and D to 1½ SM. Circling Rwy 10 NA at night. When local altimeter setting not received, use HUL altimeter setting; increase LPV DA to 769 feet; increase LNAV/VNAV DA to 1062 feet and all visibilities ¼ SM; increase all MDAs 100 feet and LNAV visibility Cats C and D ¼ SM, and Circling visibility Cat C ½ SM and Cat D ¼ SM. Baro-VNAV and VDP NA when using HUL altimeter setting. For inop ALS when using HUL altimeter setting, increase LPV all Cats visibility to ¾ SM, and LNAV Cats C and D to 1 ½ SM.

MALSR
A5
MISSED APPROACH:
Climb to 3000 direct
VEGGS and hold.

AWOS-3PT 118.025	BOSTON CENTER 124.75 239.05	CLNC DEL 121.6	UNICOM 122.8 (CTAF)	122.6
----------------------------	---------------------------------------	--------------------------	-------------------------------	--------------



ELEV 534	D	TDZE 479
----------	----------	----------



CATEGORY	A	B	C	D
LPV DA		679-½	200 (200-½)	
LNAV/VNAV DA		972-1	493 (500-1)	
LNAV MDA	1040-½	561 (600-½)	1040-1¼	561 (600-1¼)
CIRCLING	1180-1	646 (700-1)	1320-2¼	1380-2¾
			786 (800-2¼)	846 (900-2¾)

NE-1, 11 JUN 2026 to 09 JUL 2026

NE-1, 11 JUN 2026 to 09 JUL 2026