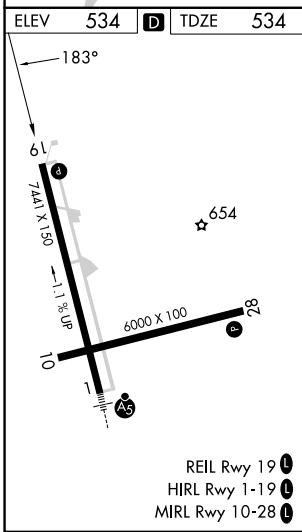
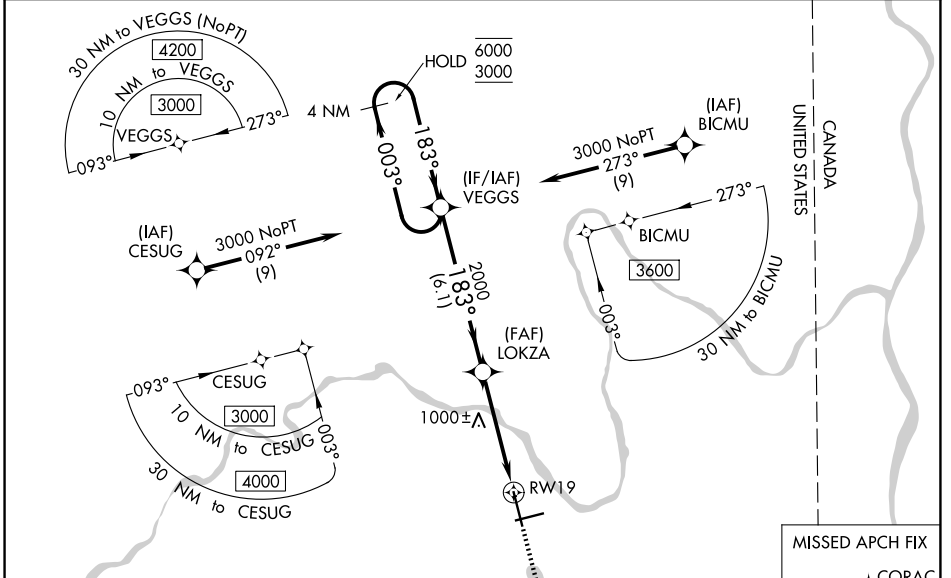


WAAS CH 99712 W19A	APP CRS 183°	Rwy Ldg TDZE Apt Elev	7441 534 534
--	------------------------	-----------------------------	---

RNAV (GPS) RWY 19

PRESQUE ISLE INTL (PQI)

RNP APCH - GPS				MISSED APPROACH: Climb to 3400 direct CORAC and hold.
<p>Rwy 19 helicopter visibility reduction below 3/4 SM NA. For uncompensated Baro-VNAV systems, LNAV/VNAV NA below -16°C or above 54°C. Circling Rwy 10 NA at night. When local altimeter setting not received, use HUL altimeter setting: increase LPV DA to 1019 feet and all visibilities 1/4 SM; increase LNAV/VNAV DA to 1205 feet and all visibilities 1/8 SM; increase all MDAs 100 feet and LNAV visibility Cats B, C, and D 1/2 SM, and Circling visibility Cats B and C 1/2 SM and Cat D 1/4 SM. Baro-VNAV and VDP NA when using HUL altimeter setting.</p>				
AWOS-3PT 118.025	BOSTON CENTER 124.75 239.05	CLNC DEL 121.6	UNICOM 122.8 (CTAF)	122.6



ELEV 534	TDZE 534	MISSED APCH FIX CORAC	
3400	CORAC	VGSI and RNAV glidepath not coincident (VGSI Angle 3.70/TCH 50).	4 NM Holding Pattern
↑		LOKZA 2000	VEGGS 6000/3000
1.7 NM	2.7 NM	6.1 NM	GP 3.00° TCH 55
183°	183°	183°	
61	7441 X 150	-1.1% UP	28
10	6000 X 100		
REIL Rwy 19	HIRL Rwy 1-19	MIRL Rwy 10-28	
CATEGORY	A	B	C
LPV DA	929-1 1/8	395 (400-1 1/8)	
LNAV/VNAV DA	1115-1 3/4	581 (600-1 3/4)	
LNAV MDA	1240-1	706 (800-1)	1240-2 706 (800-2)
CIRCLING	1240-1	706 (800-1)	1320-2 1/4 786 (800-2 1/4) 1380-2 3/4 846 (900-2 3/4)

NE-1, 11 JUN 2026 to 09 JUL 2026

NE-1, 11 JUN 2026 to 09 JUL 2026