

WIPOR FOUR ARRIVAL (RNAV)

PROVIDENCE, RHODE ISLAND

9200 TUF 60 00 ZL TL UN 09 11 '1-1-1

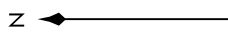
ARRIVAL ROUTE DESCRIPTION

ALBANY TRANSITION (ALB.WIPOR4)
ARRKK TRANSITION (ARRKK.WIPOR4)
MEMMS TRANSITION (MEMMS.WIPOR4)

PVD: From WIPOR on track 142° to YANTC.
LANDING PVD RUNWAYS 5, 34: From YANTC on track 129° to cross DELSS at or above 2700, then on track 129° to cross LAFAY at or above 2100, then on track 129°. Expect RADAR vectors to final approach course.
LANDING PVD RUNWAYS 16, 23: From YANTC on track 129° to SAUGY, then on track 049° to WAWIK, then on track 049° to cross SEABE at or above 5000, then on track 049°. Expect RADAR vectors to final approach course.
LANDING TAN/EWB/UUUJ/PYM/OQU: From WIPOR on track 142° to YANTC, then on track 129° to cross DELSS at or above 2700, then on track 129° to cross LAFAY at or above 2100, then on track 129°.
 Expect RADAR vectors to final approach course.
LANDING SFZ: From WIPOR on track 142° to YANTC, then on track 129° to SAUGY, then on track 055° to WAWIK, then on track 049° to cross SEABE at or above 5000, then on track 049°.
 Expect RADAR vectors to final approach course.

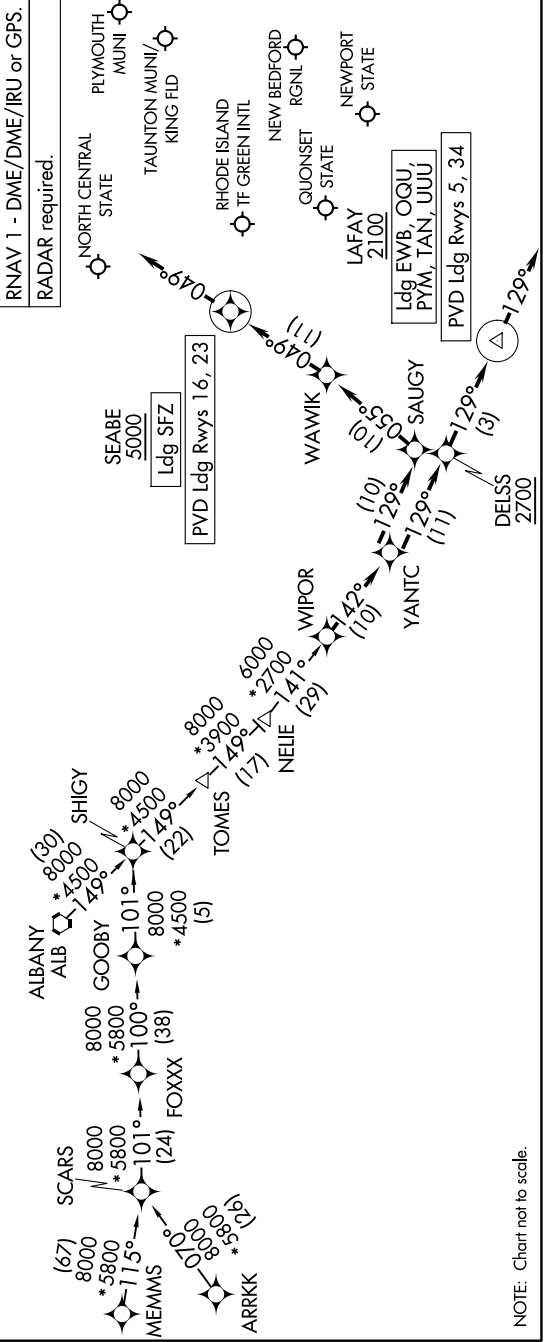
RNAV 1 - DME/DME/IRU or GPS.
 RADAR required.

PROVIDENCE APP CON *
 123.675 244.875
 EWB ATIS
 126.85
 OQU ATIS *
 118.6
 PVD D-ATIS
 124.2



WIPOR FOUR ARRIVAL (RNAV)

(WIPOR.WIPOR4) 07AUG25



NE-1, 11 JUN 2026 to 09 JUL 2026

PROVIDENCE, RHODE ISLAND