

WAAS CH <b>42721</b> <b>W35A</b>	APP CRS <b>350°</b>	Rwy Ldg TDZE Apt Elev	<b>8308</b> <b>4677</b> <b>4729</b>
--	------------------------	-----------------------------	---

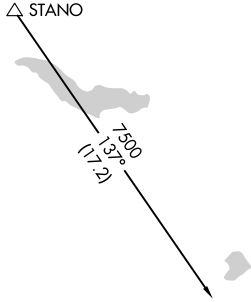
# RNAV (GPS) RWY 35

PUEBLO MEML (PUB)

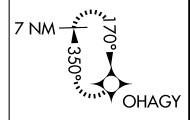
RNP APCH-GPS.		MISSED APPROACH: Climb to 5140 then climbing right turn to 7500 direct OHAGY and hold.			
---------------	--	--	--	--	--

ATIS <b>125.25</b>	DENVER APP CON ★ <b>120.1 290.5</b>	PUEBLO TOWER ★ <b>119.1 (CTAF) 0 257.8</b>	GND CON <b>121.9</b>	CLNC DEL <b>120.9</b>	UNICOM <b>122.95</b>
-----------------------	--	---	-------------------------	--------------------------	-------------------------

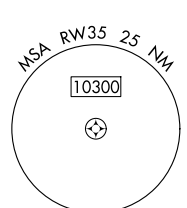
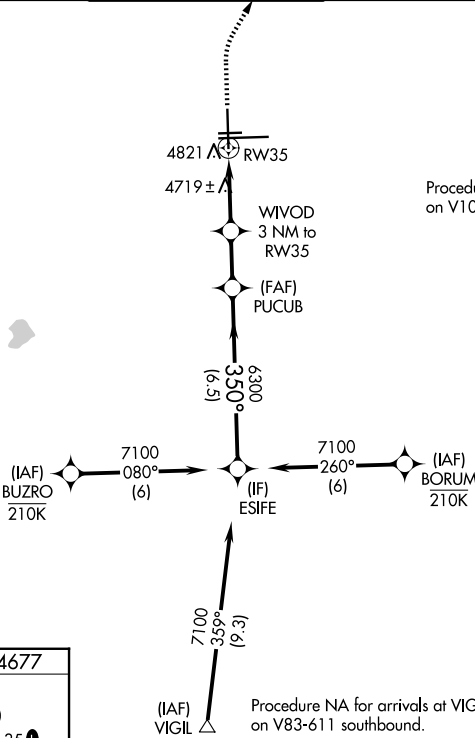
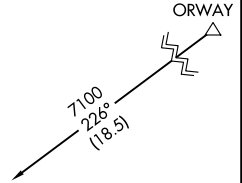
Procedure NA for arrivals at STANO on V244 westbound.



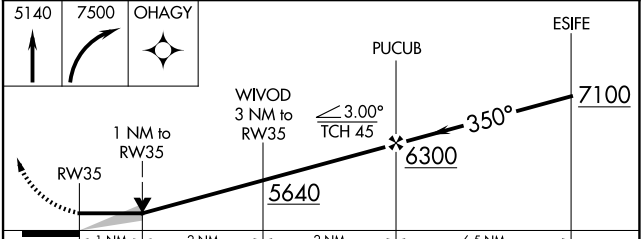
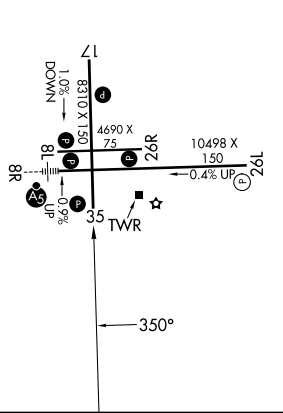
MISSED APCH FIX



Procedure NA for arrivals at ORWAY on V10-V244 eastbound.



ELEV <b>4729</b>	<b>D</b>	TDZE <b>4677</b>
HIRL Rwy 8R-26L		
MIRL Rwy 17-35 and 8L-26R		
REIL Rwy 8L, 17, 26L, 26R and 35		



CATEGORY	A	B	C	D
LP MDA	5020-1 343 (300-1)			
LNAV MDA	5120-1	443 (400-1)	5120-1½	443 (400-1½)
CIRCLING	5340-1	611 (700-1)	5580-2½ 851 (900-2½)	5800-3 1071 (1100-3)

SW-1, 11 JUN 2026 to 09 JUL 2026

SW-1, 11 JUN 2026 to 09 JUL 2026