

UNIVERSAL CITY, TEXAS

# ILS or LOC RWY 33L

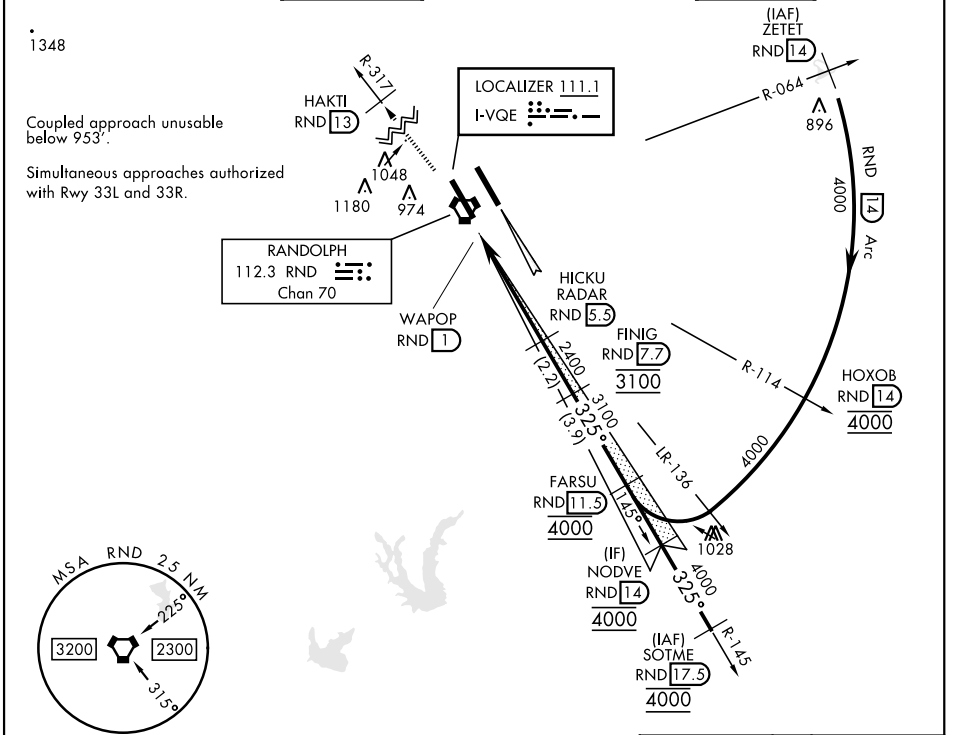
LOC I-VQE <b>111.1</b>	APCH CRS <b>325°</b>	Rwy Idg TDZE Arprt Elev <b>8353</b> <b>733</b> <b>761</b>	[USAF]	RANDOLPH AFB (KRND)		
---------------------------	-------------------------	--	--------	---------------------	--	--

RADAR or DME required.

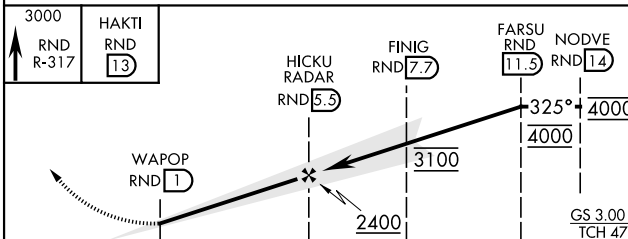
\* Circling not authorized NE of Rwy 15R-33L.

MISSED APPROACH: Climb to 3000 on RND VORTAC R-317 to 13 DME (HAKTI). Expect ATC instructions.

ATIS ★ <b>290.525</b>	SAN ANTONIO APP CON <b>128.05 318.1</b>	TOWER ★ <b>128.25 294.7</b>	GND CON <b>119.65 275.8</b>	HANGOVER ATIS ★ <b>327.8</b>	HANGOVER TOWER ★ <b>120.5 291.1</b>	HANGOVER GND CON <b>124.75</b> <b>353.75</b>
--------------------------	---	--------------------------------	--------------------------------	------------------------------------	---	---

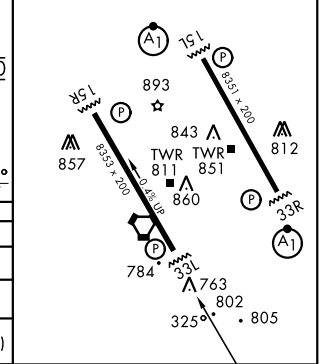


EMERG SAFE ALT 100 NM 4100



ELEV 761	TDZE 733
----------	----------

ALS Rwy 15L nstd len 2100' HIRL all rwys



CATEGORY	A	B	C	D	E
S-ILS 33L	933/40		200	(200-¾)	
S-LOC 33L	1080/55		347	(400-1)	
CIRCLING*	1240-1 479 (500-1)	1280-1 519 (600-1)	1500-2 739 (800-2)	2000-3	1239 (1300-3)

UNIVERSAL CITY, TEXAS      29°32'N-98°17'W      RANDOLPH AFB (KRND)

Amdt 3 17APR25

# ILS or LOC RWY 33L

SC-3, 11 JUN 2026 to 09 JUL 2026

SC-3, 11 JUN 2026 to 09 JUL 2026