

UNIVERSAL CITY, TEXAS

# RNAV (GPS) RWY 33L

APCH CRS <b>325°</b>	Rwy Idg TDZE Arprt Elev <b>8353</b> <b>733</b> <b>761</b>
-------------------------	--------------------------------------------------------------------------

[USAF]

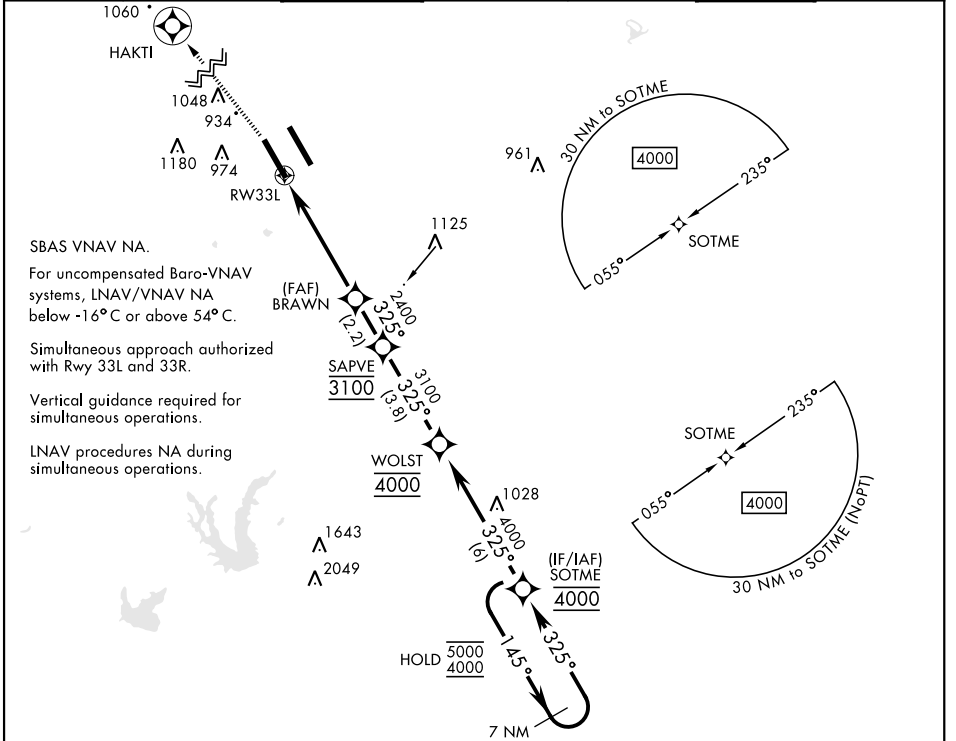
RANDOLPH AFB (KRND)

RNP APCH - GPS

\* Circling not authorized NE of Rwy 15R-33L.

MISSED APPROACH: Climb to 1300, then climbing left turn to 3000 direct HAKTI. Expect ATC instructions.

ATIS ★ <b>290.525</b>	SAN ANTONIO APP CON <b>128.05 318.1</b>	TOWER ★ <b>128.25 294.7</b>	GND CON <b>119.65 275.8</b>	HANGOVER ATIS ★ <b>327.8</b>	HANGOVER TOWER ★ <b>120.5 291.1</b>	HANGOVER GND CON <b>124.75</b> <b>353.75</b>
--------------------------	-----------------------------------------------	--------------------------------	--------------------------------	------------------------------------	-------------------------------------------	-------------------------------------------------------



SC-3, 11 JUN 2026 to 09 JUL 2026

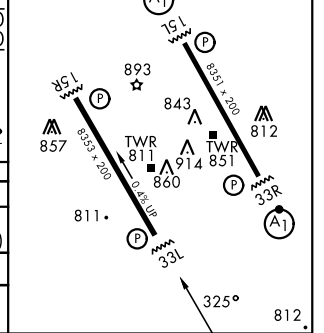
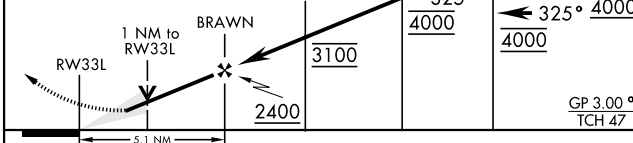
SC-3, 11 JUN 2026 to 09 JUL 2026

### EMERG SAFE ALT 100 NM 4100



ELEV 761	TDZE 733
----------	----------

ALS Rwy 15L nstd len 2100'  
HIRL all rwys



CATEGORY	A	B	C	D	E
LNAV/VNAV DA	983/40	250	(300-¾)	992/40 259 (300-¾)	1030/45 297 (300-¾)
LNAV MDA	1080/55		347	(400-1)	
CIRCLING*	1240-1 479 (500-1)	1280-1 519 (600-1)	1500-2 739 (800-2)	2000-3	1239 (1300-3)

UNIVERSAL CITY, TEXAS  
Amdt 4 20FEB25

29°32'N-98°17'W

RANDOLPH AFB (KRND)

# RNAV (GPS) RWY 33L