

# RNAV (GPS) RWY 33R

APCH CRS <b>325°</b>	Rwy Idg TDZE Arprt Elev	<b>8351</b> <b>734</b> <b>761</b>
-------------------------	-------------------------------	---

[USAF]

RANDOLPH AFB (KRND)

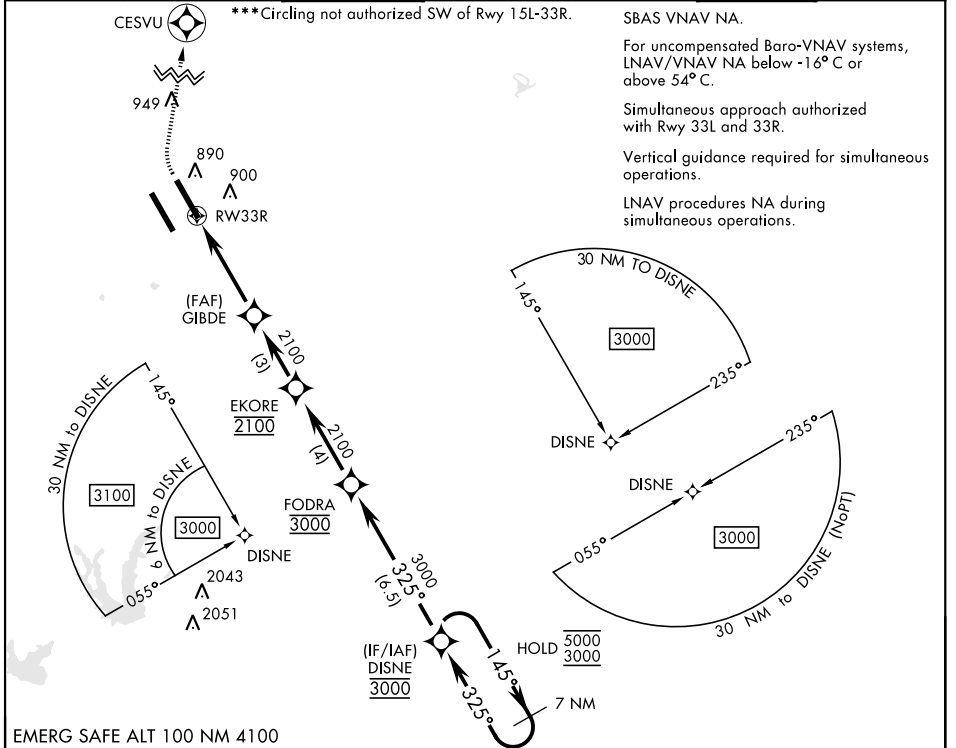
RNP APCH - GPS



MISSED APPROACH: Climb to 1500 then climbing right turn to 3000 direct CESVU. Expect ATC instructions.

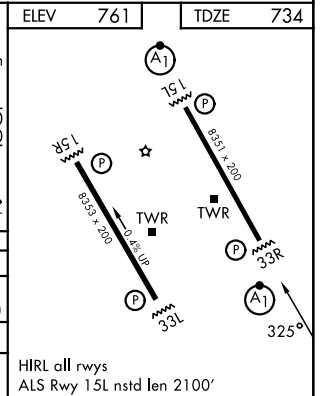
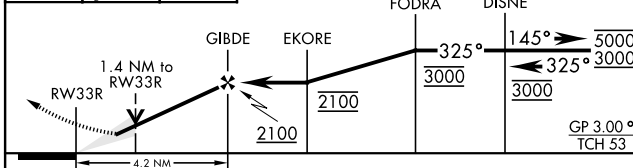
\*When ALS inop, increase CAT ABCD RVR to 40, vis to 3/8 mile; CAT E RVR to 45, vis to 7/8 mile;  
\*\*When ALS inop, increase CAT AB RVR to 55 and vis to 1 mile; CAT CDE vis to 1 3/8 miles.

ATIS ★ <b>290.525</b>	SAN ANTONIO APP CON <b>128.05 318.1</b>	TOWER ★ <b>128.25 294.7</b>	GND CON <b>119.65 275.8</b>	HANGOVER ATIS ★ <b>327.8</b>	HANGOVER TOWER ★ <b>120.5 291.1</b>	HANGOVER GND CON <b>124.75 353.75</b>
--------------------------	--	--------------------------------	--------------------------------	---------------------------------	--	--



EMERG SAFE ALT 100 NM 4100

1500	3000	CESVU	VGSI and RNAV glidepath not coincident (VGSI Angle 3.00/TCH 42).	7 NM Holding Pattern	ELEV 761	TDZE 734
------	------	-------	--	----------------------	----------	----------



CATEGORY	A	B	C	D	E
LNAV/VNAV DA *	983/24	250 (300-1/2)		987/24 254 (300-1/2)	1025/24 292 (300-1/2)
LNAV MDA **	1200/24	467 (500-1/2)	1200/50	467 (500-1)	
CIRCLING ***	1240-1	479 (500-1)	1260-1 1/2 499 (500-1 1/2)	1900-3	1139 (1200-3)

HIRL all rwys  
ALS Rwy 15L nstd len 2100'

# RNAV (GPS) RWY 33R

SC-3, 11 JUN 2026 to 09 JUL 2026

SC-3, 11 JUN 2026 to 09 JUL 2026