

# SNIDR TWO DEPARTURE (RNAV)

9200 NR 60 of 2026 NR 14 '8-CS

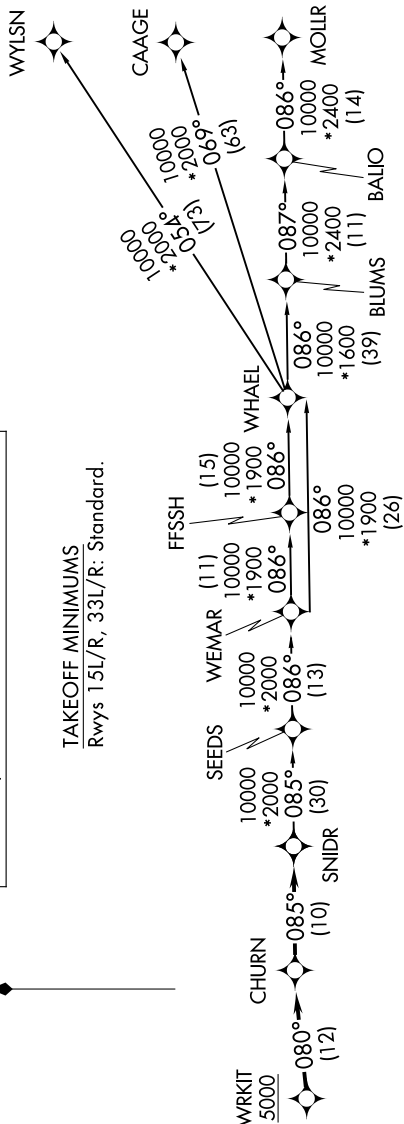
SAN ANTONIO DEP CON  
127.1 290.225  
ATIS ★  
290.525  
ATIS (HANGOVER) ★  
327.8  
CLNC DEL (15L-33R)  
338.35  
GND CON  
119.65 275.8  
GND CON (HANGOVER)  
124.75 353.75  
TOWER ★  
128.25 294.7  
HANGOVER TOWER ★  
120.5 291.1

RNAV 1 - DME/DME/IRU or GPS.  
RADAR required for non-GPS equipped aircraft.  
RADAR required.

**TOP ALTITUDE:  
ASSIGNED BY ATC**

**TAKEOFF MINIMUMS**  
Rwys 15L/R, 33L/R: Standard.

N

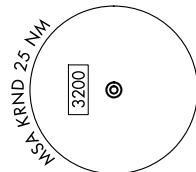
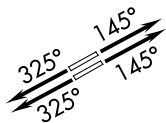


## DEPARTURE ROUTE DESCRIPTION

TAKEOFF RUNWAYS 15L/R: Climb on heading 145° or as assigned by ATC, for vectors to WRKIT, thence. . .  
TAKEOFF RUNWAYS 33L/R: Climb on heading 325° or as assigned by ATC, for vectors to WRKIT, thence. . .

. . . on track 080° to CHURN, then on track 085° to SNIDR. Expect filed altitude 10 minutes after departure.

- BLUMS TRANSITION (SNIDR2.BLUMS)
- CAAGE TRANSITION (SNIDR2.CAAGE)
- FFSSH TRANSITION (SNIDR2.FFSSH)
- MOLLR TRANSITION (SNIDR2.MOLLR)
- SEEDS TRANSITION (SNIDR2.SEEDS)
- WEMAR TRANSITION (SNIDR2.WEMAR)
- WHAEL TRANSITION (SNIDR2.WHAEL)
- WYLSN TRANSITION (SNIDR2.WYLSN)



NOTE: Chart not to scale.

# SNIDR TWO DEPARTURE (RNAV)

(SNIDR2.SNIDR) 07AUG25

UNIVERSAL CITY, TEXAS  
RANDOLPH AFB (KRND)

SC-3, 11 JUN 2026 to 09 JUL 2026