

# TACAN RWY 33L

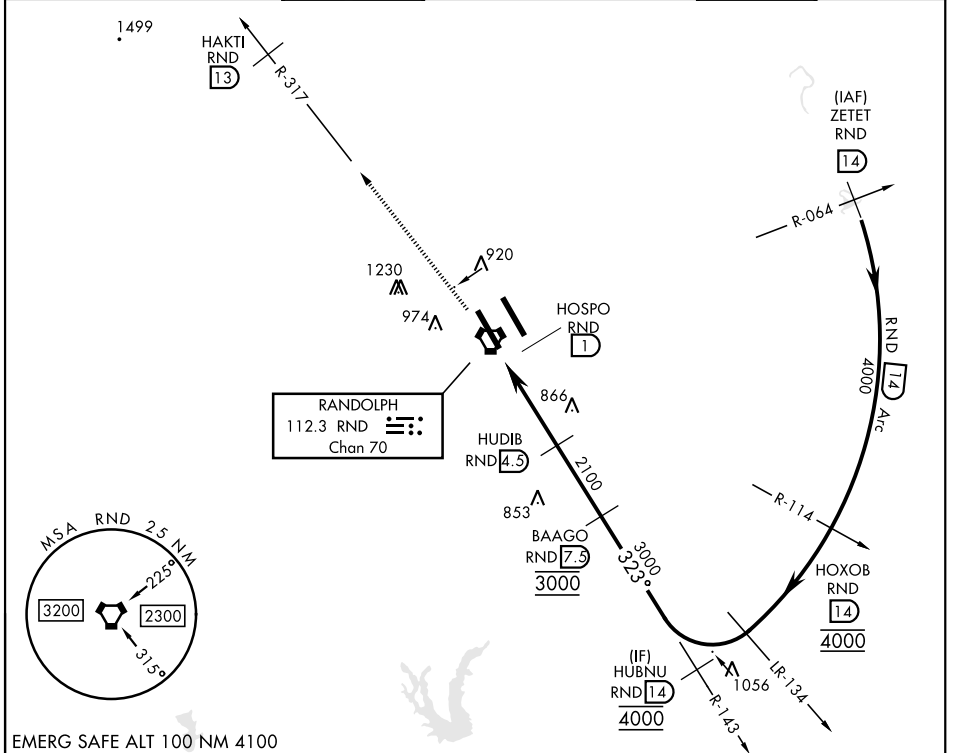
VORTAC RND <b>112.3</b> Chan <b>70</b>	APCH CRS <b>323°</b>	Rwy Idg TDZE Arprt Elev <b>8353</b> <b>733</b> <b>761</b>	[USAF]	RANDOLPH AFB (KRND)
--	-------------------------	--	--------	---------------------

RADAR required

\* Circling not authorized NE of Rwy 15R-33L.

MISSED APPROACH: Climb to 3000 out RND VORTAC R-317 to RND 13 DME (HAKTI). Expect ATC instructions.

ATIS ★ <b>290.525</b>	SAN ANTONIO APP CON <b>128.05 318.1</b>	TOWER ★ <b>128.25 294.7</b>	GND CON <b>119.65 275.8</b>	HANGOVER ATIS ★ <b>327.8</b>	HANGOVER TOWER ★ <b>120.5 291.1</b>	HANGOVER GND CON <b>124.75</b> <b>353.75</b>
--------------------------	---	--------------------------------	--------------------------------	------------------------------------	---	---



EMERG SAFE ALT 100 NM 4100

ELEV 761	TDZE 733	3000 RND R-317	HAKTI RND 13
----------	----------	----------------	--------------

HIRL all rwys  
ALS Rwy 15L nstd  
len 2100'

RND VORTAC	HOSPO RND 1	HUDIB RND 4.5	BAAGO RND 7.5	HUBNU RND 14
3000	2100	3000	3000	4000
0.7	3.5 NM			

CATEGORY	A	B	C	D	E
S-33L	1120/55	387 (400-1)	1120/60	387 (400-1½)	
CIRCLING*	1240-1 479 (500-1)	1280-1 519 (600-1)	1500-2 739 (800-2)	2000-3 1239 (1300-3)	

# TACAN RWY 33L

SC-3, 11 JUN 2026 to 09 JUL 2026

SC-3, 11 JUN 2026 to 09 JUL 2026