

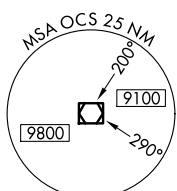
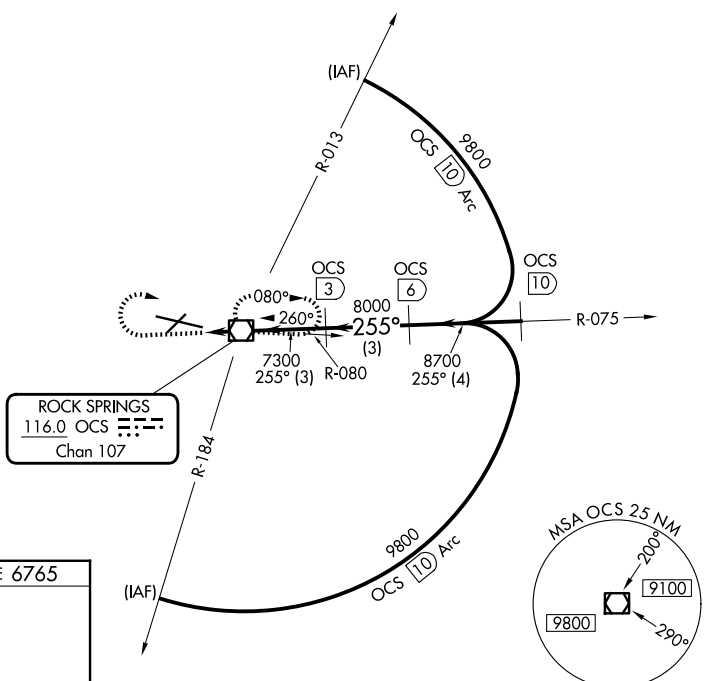
VOR/DME OCS <b>116.0</b> Chan <b>107</b>	APP CRS <b>255°</b>	Rwy Ldg TDZE Apt Elev	<b>10002</b> <b>6765</b> <b>6765</b>
--	------------------------	-----------------------------	--

# VOR/DME RWY 27

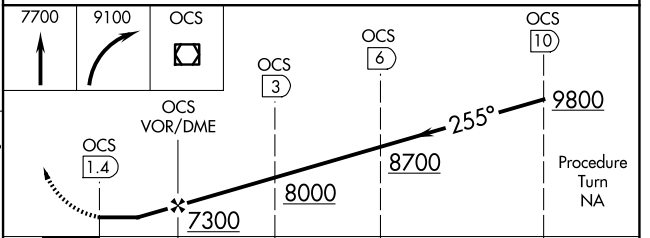
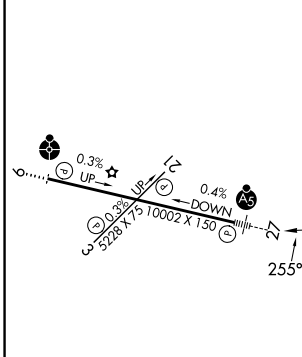
SOUTHWEST WYOMING RGNL (R.K.S)

<p>Inoperative table does not apply to Cat D.</p>	<p>MALSR</p>	<p>MISSED APPROACH: Climb to 7700, then climbing right turn to 9100 direct OCS VOR/DME and hold.</p>
---	--------------	--

AWOS-3 <b>118.375</b>	SALT LAKE CENTER <b>124.35 353.5</b>	UNICOM <b>122.8 (CTAF) 1</b>
--------------------------	---	---------------------------------



ELEV 6765	<b>D</b>	TDZE 6765
-----------	----------	-----------



CATEGORY	A	B	C	D
S-27	7040-1/2 275 (300-1/2)			7040-1 275 (300-1)
CIRCLING	7140-1 375 (400-1)	7220-1 455 (500-1)	7220-1 1/2 455 (500-1 1/2)	NA

MIRL Rwy 3-21  
HIRL Rwy 9-27 **1**  
REIL Rwys 3 and 21 **1**

NW-1, 11 JUN 2026 to 09 JUL 2026

NW-1, 11 JUN 2026 to 09 JUL 2026