

AMRVR TWO ARRIVAL (RNAV)

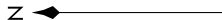
AL-356 (FAA)

SACRAMENTO MATHER (MHR)
SACRAMENTO, CALIFORNIA

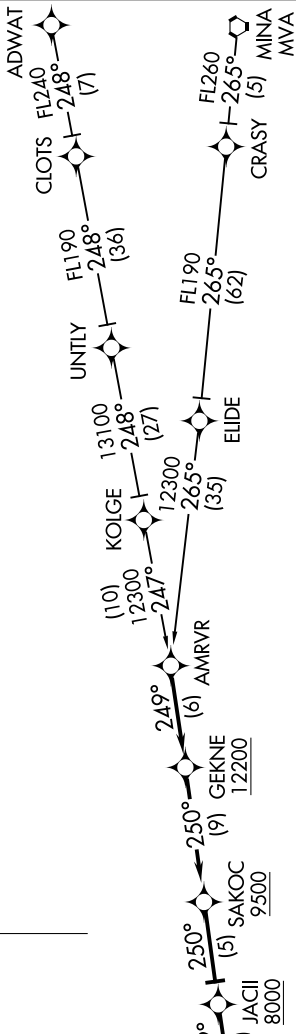
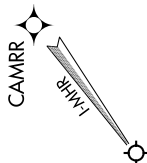
9200 UN 60 of 9200 UN 11 'Z-MS

NORCAL APP CON
127.4 317.5
ATIS
118.325
MATHER TOWER ★
120.65 282.25

NOTE: RNAV 1.
NOTE: DME/DME/IRU or GPS required.
NOTE: Turbojet aircraft only.
NOTE: RADAR required for non-GPS equipped aircraft.



HANGTOWN
HNW
7000
Ldg KMHR



ARRIVAL ROUTE DESCRIPTION

ADWAT TRANSITION (ADWAT.AMRVR2)

MINA TRANSITION (MVA.AMRVR2)

... From AMRVR on track 249° to cross GEKNE at or above 12200, then on track 250° to cross SAKOC at or above 9500, then on track 250° to cross JACII at or above 8000, then on track 249° to cross HNW VOR/DME at or above 7000. Expect ILS approach Runway 22L or visual approach.

NOTE: Chart not to scale.

AMRVR TWO ARRIVAL (RNAV)