

(BERYY6.BERYY) 25331

BERYY SIX DEPARTURE (RNAV)

AL-360 (FAA)

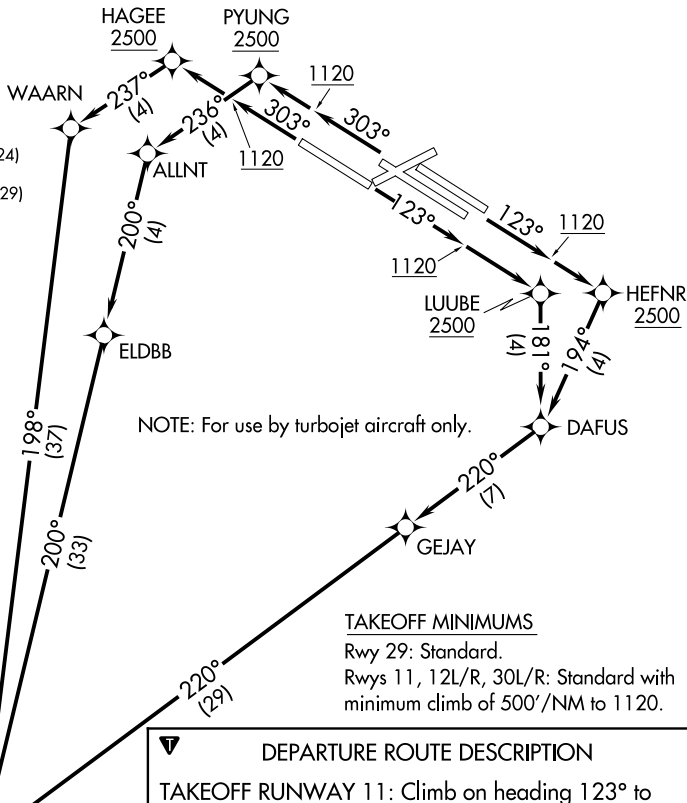
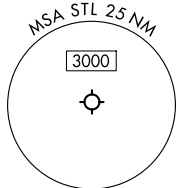
ST LOUIS LAMBERT INTL (STL)
ST. LOUIS, MISSOURI

ST. LOUIS DEP CON
128.1 307.05
D-ATIS
125.025 379.925
CLNC DEL
119.5 363.1
GND CON
121.9 348.6 (Inbound)
121.65 377.175 (Outbound)
118.925 227.125 (Rwy 11/29)
ST. LOUIS TOWER
120.05 284.6 (Rwys 12L/30R, 24)
118.5 257.7 (Rwy 12R/30L)
132.475 239.275 (Rwys 6, 11/29)

RNAV 1 - DME/DME/IRU or GPS.

RADAR required.

**TOP ALTITUDE:
5000**



NOTE: For use by turbojet aircraft only.

TAKEOFF MINIMUMS

Rwy 29: Standard.
Rwys 11, 12L/R, 30L/R: Standard with minimum climb of 500'/NM to 1120.

DEPARTURE ROUTE DESCRIPTION

- TAKEOFF RUNWAY 11:** Climb on heading 123° to 1120, then direct to cross LUUBE at or above 2500, then on depicted route to BERYY. Thence. . .
- TAKEOFF RUNWAYS 12L/R:** Climb on heading 123° to 1120, then direct to cross HEFN at or above 2500, then on depicted route to BERYY. Thence. . .
- TAKEOFF RUNWAY 29:** Climb on heading 303° to 1120, then direct to cross HAGEE at or above 2500, then on depicted route to BERYY. Thence. . .
- TAKEOFF RUNWAYS 30L/R:** Climb on heading 303° to 1120, then direct to cross PYUNG at or above 2500, then on depicted route to BERYY. Thence. . .

. . . on transition. Maintain 5000, expect filed altitude 10 minutes after departure.

LITTR TRANSITION (BERYY6.LITTR)

NOTE: Chart not to scale.

NC-3, 11 JUN 2026 to 09 JUL 2026

NC-3, 11 JUN 2026 to 09 JUL 2026

BERYY SIX DEPARTURE (RNAV)

(BERYY6.BERYY) 27NOV25

ST. LOUIS, MISSOURI
ST LOUIS LAMBERT INTL (STL)