

DRUSE FIVE DEPARTURE (RNAV)

AL-360 (FAA)

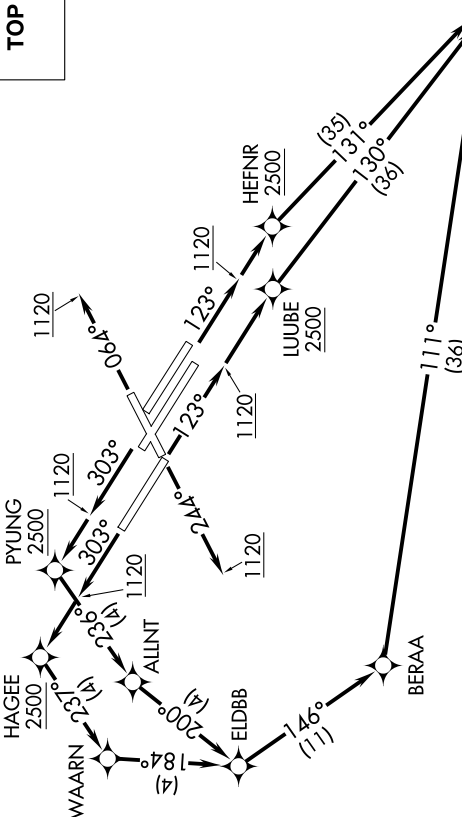
ST LOUIS LAMBERT INTL (STL)

ST. LOUIS, MISSOURI

D-ATIS
125.025 379.925
CLNC DEL
119.5 363.1
CPDLC
GND CON
121.9 348.6 (Inbound)
121.65 377.175 (Outbound)
118.925 227.125 (Rwy 11/29)
ST. LOUIS TOWER
120.05 284.6 (Rwys 12L/30R, 24)
118.5 257.7 (Rwys 6, 11/29)
132.475 239.275 (Rwys 6, 11/29)
ST. LOUIS DEP CON
128.1 307.05



**TOP ALTITUDE:
5000**



TAKEOFF MINIMUMS

- Rwys 6, 24: Standard with minimum climb of 500' per NM to 1120 then minimum climb of 260' per NM to 5000.
- Rwy 11: Standard with minimum climb of 500' per NM to LUUBE.
- Rwys 12L/R: Standard with minimum climb of 500' per NM to HEFNR.
- Rwy 29: Standard with minimum climb of 500' per NM to HAGEE.
- Rwys 30L/R: Standard with minimum climb of 500' per NM to PYUNG.

- NOTE: RNAV 1.
- NOTE: DME/DME/IRU or GPS required.
- NOTE: RADAR required.
- NOTE: For use by turbojet aircraft only.

NOTE: Chart not to scale.

(NARRATIVE ON FOLLOWING PAGE)

NC-3, 11 JUN 2026 to 09 JUL 2026

NC-3, 11 JUN 2026 to 09 JUL 2026

DRUSE FIVE DEPARTURE (RNAV)

(DRUSE5.DRUSE) 19JUL18

ST. LOUIS, MISSOURI
ST LOUIS LAMBERT INTL (STL)