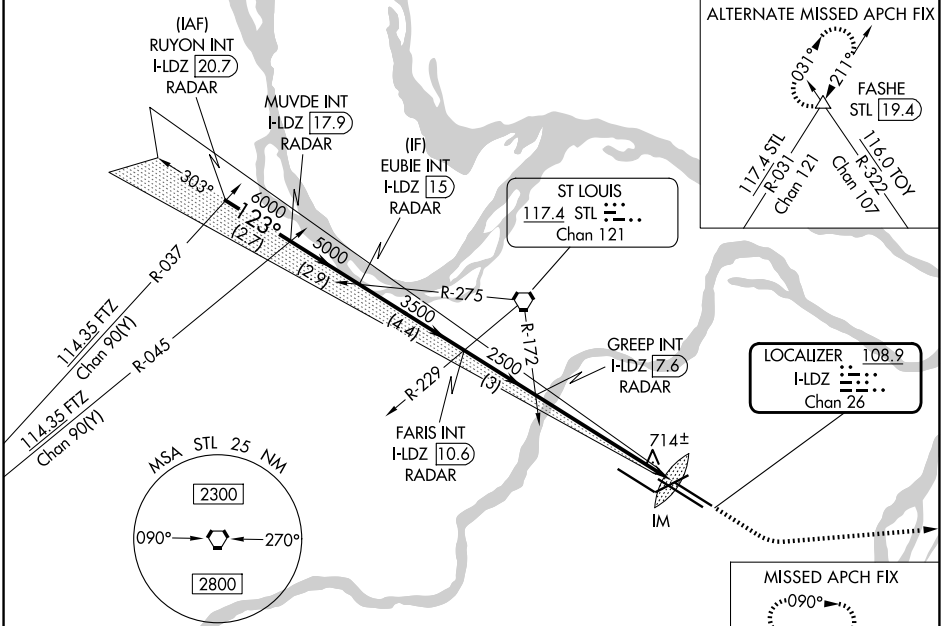


LOC/DME I-LDZ <b>108.9</b> Chan 26	APP CRS <b>123°</b>	Rwy Ldg TDZE 8956 541	Apt Elev 617
--	------------------------	-----------------------------	-----------------

# ILS RWY 12L (CAT II & III)

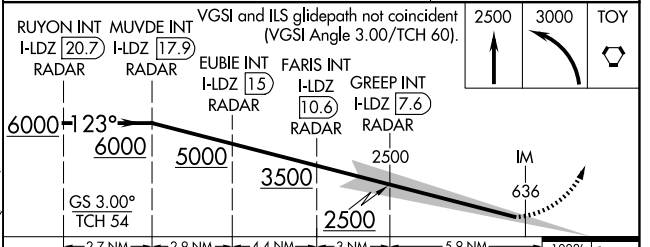
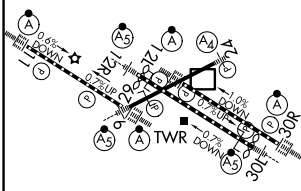
ST LOUIS LAMBERT INTL (STL)

RADAR and DME required.		ALSIF-2 	MISSED APPROACH: Climb to 2500 then climbing left turn to 3000 direct TOY VORTAC and hold.
Simultaneous approach authorized with Rwy 11.			
D-ATIS <b>125.025 379.925</b>	ST. LOUIS APP CON <b>132.125 360.6</b>	ST. LOUIS TOWER <b>120.05 284.6</b>	GND CON <b>121.9 348.6</b> (Inbound) <b>121.65 377.175</b> (Outbound) <b>118.925 227.125</b> (11/29)



ELEV 617	<b>D</b>	TDZE 541
----------	----------	----------

Rwy 6-24 7603 X 150  
Rwy 11-29 9000 X 150  
Rwy 12L-30R 9013 X 150  
Rwy 12R-30L 11020 X 150



CATEGORY	A	B	C	D
S-ILS 12L	CAT II RA 112/12 100 DA 641			
S-ILS 12L	CAT III RVR 06			

## CATEGORY II & III ILS - SPECIAL AIRCREW & AIRCRAFT CERTIFICATION REQUIRED

HIRL all rwys  
TDZL/RCLS Rwys 11, 12L, 12R, 29, and 30R

NC-3, 11 JUN 2026 to 09 JUL 2026

NC-3, 11 JUN 2026 to 09 JUL 2026