

| | | | | |
|---|------------------------|--|------------------------|----------------------------|
| LOC/DME I-LMR 109.7 Chan 34 | APP CRS 123° | Rwy Ldg 12R 10553 12L 8956 | TDZE 540 541 | Apt Elev 617 617 |
|---|------------------------|--|------------------------|----------------------------|

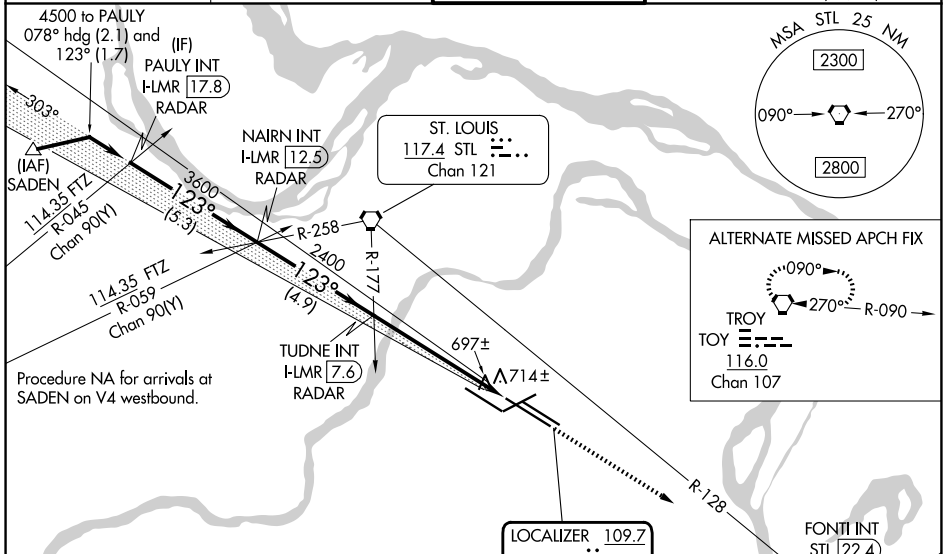
ILS or LOC RWY 12R

ST LOUIS LAMBERT INTL (STL)

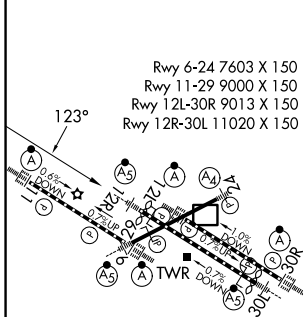
▼ LOC only: Rwy 12R helicopter visibility reduction below RVR 4000 NA. Inop table does not apply to sidestep Rwy 12L. For inop ALS, increase S-ILS 12R Cat E visibility to RVR 4000 and increase S-LOC 12R Cats A/B visibility to RVR 5500, Cats C/D/E visibility to RVR 6000. Simultaneous approach authorized with Rwy 11. Simultaneous approach authorized with Rwy 12L requires use of vertical guidance, maintain last assigned altitude until established on glideslope.

| | | |
|-------------------|--------------------|--|
| MALSR Rwy 12R | ALS-F2 Rwy 12L | MISSED APPROACH: Climb to 5000 on STL VORTAC R-128 to FONTI INT/STL 22.4 DME and hold, continue climb-in-hold to 5000. |
|-------------------|--------------------|--|

| | | | |
|----------------------------------|---|---------------------------------------|---|
| D-ATIS 125.025 379.925 | ST. LOUIS APP CON 132.125 360.6 | ST. LOUIS TOWER 118.5 257.7 | GND CON 121.9 348.6 (Inbound) 121.65 377.175 (Outbound) 118.925 227.125 (11/29) |
|----------------------------------|---|---------------------------------------|---|



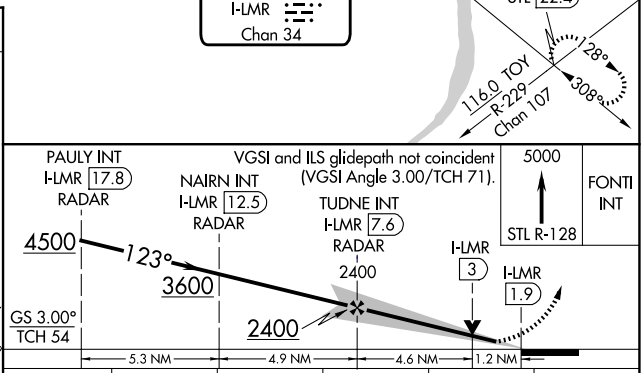
| | |
|----------|-----------------------|
| ELEV 617 | D TDZE 12R 540 |
| | TDZE 12L 541 |



HIRL all rwys
TDZL/RCLS Rws 11, 12L, 12R,
29, and 30R

FAF to MAP 5.7 NM

| | | | | | |
|---------|------|------|------|------|------|
| Knots | 60 | 90 | 120 | 150 | 180 |
| Min:Sec | 5:42 | 3:48 | 2:51 | 2:17 | 1:54 |



| | | | | | |
|--------------|--------------------|---------------------|-------------------|---|---|
| CATEGORY | A | B | C | D | E |
| S-ILS 12R | 740/18 200 (200-½) | | | | |
| S-LOC 12R | 960/40 420 (400-¾) | | | | |
| SIDESTEP 12L | 980-1 439 (400-1) | 980-1½ 439 (400-1½) | 980-2 439 (400-2) | | |

NC-3, 11 JUN 2026 to 09 JUL 2026

NC-3, 11 JUN 2026 to 09 JUL 2026