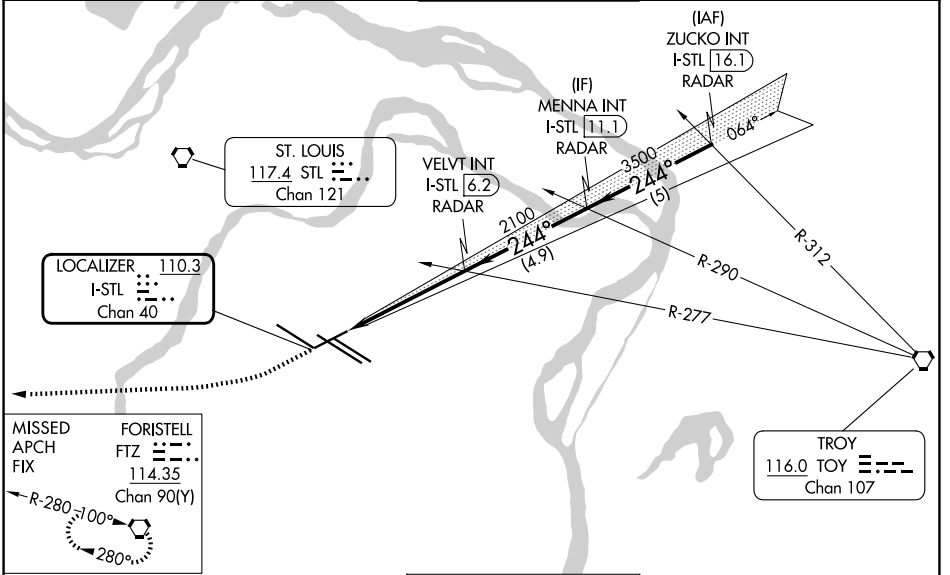


LOC/DME I-STL <b>110.3</b> Chan 40	APP CRS <b>244°</b>	Rwy Ldg TDZE <b>7603</b> <b>534</b> Apt Elev <b>618</b>
--	------------------------	---

# ILS or LOC RWY 24

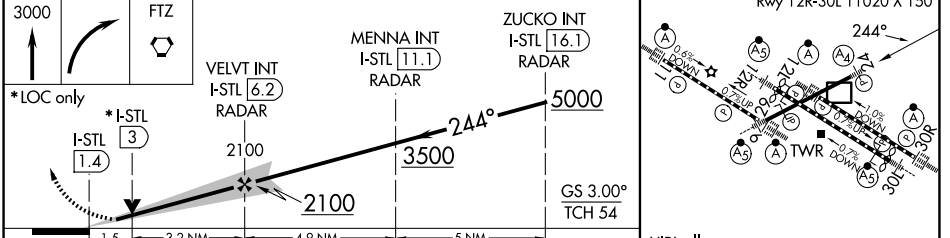
ST LOUIS LAMBERT INTL (STL)

RADAR required for procedure entry.			MALS 	MISSED APPROACH: Climb to 3000 then right turn direct FTZ VORTAC and hold.
Inop table does not apply to S-ILS 24. For inop ALS, increase S-LOC 24 Cat E visibility to 1% SM.				
D-ATIS <b>125.025 379.925</b>	ST. LOUIS APP CON <b>132.125 360.6</b>	ST. LOUIS TOWER <b>120.05 284.6</b>	GND CON <b>121.9 348.6</b> (Inbound) <b>121.65 377.175</b> (Outbound) <b>118.925 227.125</b> (11/29)	



ELEV 618	TDZE 534
----------	----------

Rwy 6-24 7603 X 150	Rwy 11-29 9000 X 150	Rwy 12L-30R 9013 X 150	Rwy 12R-30L 11020 X 150
---------------------	----------------------	------------------------	-------------------------



CATEGORY	A	B	C	D	E
S-ILS 24	734/40 200 (200-¾)				
S-LOC 24	1080/40	546 (500-¾)	1080-1⅜	546 (500-1⅜)	
FAF to MAP 4.8 NM					
Knots	60	90	120	150	180
Min:Sec	4:48	3:12	2:24	1:55	1:36

NC-3, 11 JUN 2026 to 09 JUL 2026

NC-3, 11 JUN 2026 to 09 JUL 2026