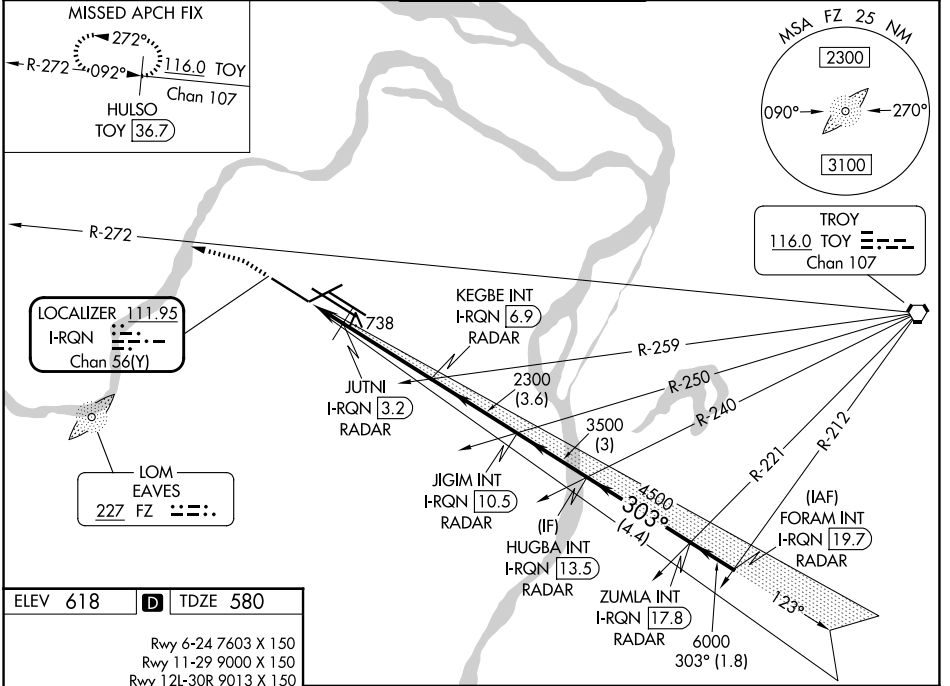


LOC/DME I-RQN <b>111.95</b> Chan <b>56(Y)</b>	APP CRS <b>303°</b>	Rwy Ldg TDZE Apt Elev <b>9000</b> <b>580</b> <b>618</b>
---	------------------------	--

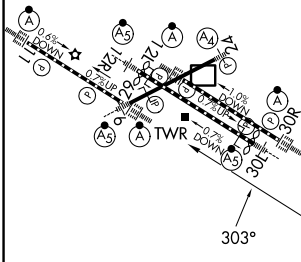
# ILS or LOC RWY 29

ST LOUIS LAMBERT INTL (STL)

RADAR required for procedure entry. DME or RADAR required.			ALSIF-2 	MISSED APPROACH: Climb to 1040 then climbing left turn to 3000 on heading 286° and on TOY VORTAC R-272 to HULSO/TOY 36.7 DME and hold.
<p>▼ Simultaneous approach authorized with Rwy 30R/L. Autopilot coupled approach NA. Rwy 29 helicopter visibility reduction below RVR 4000 NA. For inop ALS, increase S-ILS Cat E visibility to RVR 4000, increase S-LOC Cats A/B visibility to RVR 5500, and Cat C/D/E to RVR 6000.</p>				
D-ATIS <b>125.025 379.925</b>	ST. LOUIS APP CON <b>132.125 360.6</b>	ST. LOUIS TOWER <b>132.475 239.275</b>	GND CON <b>121.9 348.6</b> (Inbound) <b>121.65 377.175</b> (Outbound) <b>118.925 227.125</b> (11/29)	



ELEV 618	<b>D</b>	TDZE 580
Rwy 6-24 7603 X 150 Rwy 11-29 9000 X 150 Rwy 12L-30R 9013 X 150 Rwy 12R-30L 11020 X 150		



HIRL all rwys  
TDZL/RCLS Rws 11, 12L, 12R, 29, and 30R

FAF to MAP 5.2 NM

Knots	60	90	120	150	180
Min:Sec	5:12	3:28	2:36	2:05	1:44

1040 hdg 286° TOY R-272 HULSO TOY 36.7		VGS1 and ILS glidepath not coincident (VGS1 Angle 3.00/ TCH 73).			
Disregard OM indications. * LOC only		ZUMLA INT I-RQN 17.8 RADAR FORAM INT I-RQN 19.7 RADAR HUGBA INT I-RQN 13.5 RADAR JIGIM INT I-RQN 10.5 RADAR KEGBE INT I-RQN 6.9 RADAR JUTNI I-RQN 3.2 RADAR I-RQN 1.7			
303°-6000 6000 4500 3500 2300 1100*		GS 3.00° TCH 56			
CATEGORY	A	B	C	D	E
S-ILS 29		780/18	200 (200-½)		
S-LOC 29		980/40	400 (400-¾)		

NC-3, 11 JUN 2026 to 09 JUL 2026

NC-3, 11 JUN 2026 to 09 JUL 2026