

# LORLE THREE ARRIVAL (RNAV) Arrival Routes

9202 UN 60 01 2026 UN 11 '3-C-NC

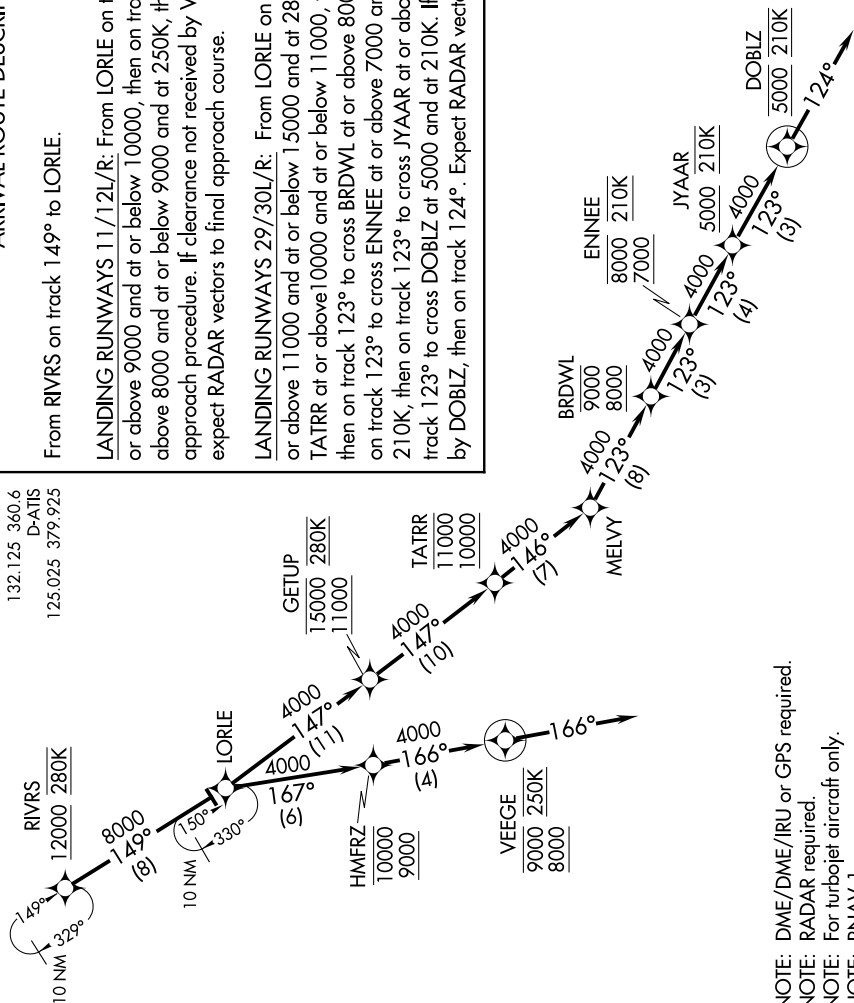
## ARRIVAL ROUTE DESCRIPTION

From RIVRS on track 149° to LORLE.

**LANDING RUNWAYS 11/12L/R:** From LORLE on track 167° to cross HMFZR at or above 9000 and at or below 10000, then on track 166° to cross VEEGE at or above 8000 and at or below 9000 and at 250K, then via assigned instrument approach procedure. If clearance not received by VEEGE, then on track 166°, expect RADAR vectors to final approach course.

**LANDING RUNWAYS 29/30L/R:** From LORLE on track 147° to cross GETUP at or above 11000 and at or below 15000 and at 280K, then on track 147° to cross TATRR at or above 10000 and at or below 11000, then on track 146° to MELVY, then on track 123° to cross BRDWL at or above 8000 and at or below 9000, then on track 123° to cross ENNEE at or above 7000 and at or below 8000 and at 210K, then on track 123° to cross JYAAR at or above 5000 and at or below 8000 and at 210K, then on track 123° to cross DOBLZ at 5000 and at 210K. If approach clearance not received by DOBLZ, then on track 124°. Expect RADAR vectors to final approach course.

ST LOUIS APP CON  
132.125 340.6  
D-ATIS  
125.025 379.925



NOTE: DME/DME/IRU or GPS required.  
NOTE: RADAR required.  
NOTE: For turbojet aircraft only.  
NOTE: RNAV-1.

NOTE: Chart not to scale.

NC-3, 11 JUN 2026 to 09 JUL 2026

# LORLE THREE ARRIVAL (RNAV) Arrival Routes