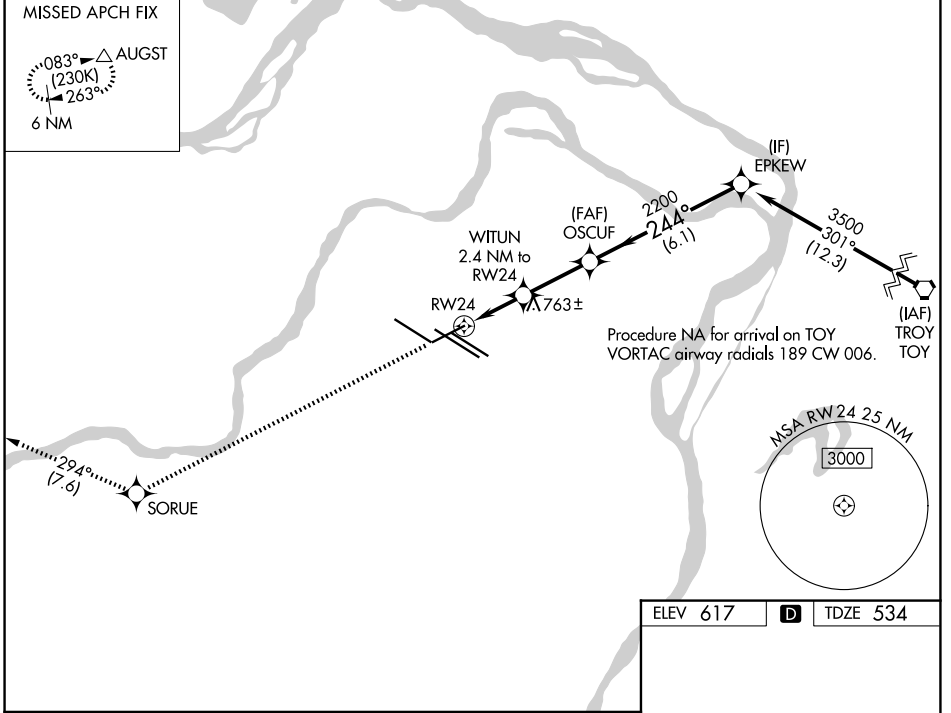


WAAS CH 87021 W24A	APP CRS 244°	Rwy Ldg TDZE Apt Elev	7603 534 617
--	------------------------	-----------------------------	---

RNAV (GPS) RWY 24

ST LOUIS LAMBERT INTL (STL)

RNP APCH - GPS.		MALSS		MISSED APPROACH: Climb to 3000 direct SORUE and on track 294° to AUGST and hold.	
▼ For uncompensated Baro-VNAV systems, LNAV/VNAV NA below -16°C or above 54°C. Inop table does not apply to LPV. For inop ALS, increase LNAV/VNAV Cat E visibility to 1 3/8 SM and LNAV Cat E visibility to 1 3/8 SM.		MALS			
D-ATIS 125.025 379.925	ST. LOUIS APP CON 132.125 360.6	ST. LOUIS TOWER 120.05 284.6	GND CON 121.9 348.6 (Inbound) 121.65 377.175 (Outbound) 118.925 227.125 (Rwy 11/29)		CLNC DEL 119.5 363.1
			CPDLC		



3000	SORUE	tr 294°	AUGST	EPKEW	
↑	✧		△		
WITUN 2.4 NM to RW24		OSCUF 2200	3500		
1.5 NM to RW24		244°		GP 3.00° TCH 50	
RW24		2200			
1340					
-1.5 NM		0.9 NM		-2.7 NM	
				-6.1 NM	
CATEGORY	A	B	C	D	E
LPV DA	734/40		200 (200-3/4)		
LNAV/VNAV DA	1015/60		481 (400-1 1/4)		
LNAV MDA	1080/40	546 (500-3/4)	1080-1 3/8		546 (500-1 3/8)

ELEV 617	D	TDZE 534
----------	----------	----------

Rwy 6-24 7603 X 150
Rwy 11-29 9000 X 150
Rwy 12L-30R 9013 X 150
Rwy 12R-30L 11020 X 150

HIRL all Rwys
TDZ/CL Rwys 11, 12L, 12R, 29, and 30R

NC-3, 11 JUN 2026 to 09 JUL 2026

NC-3, 11 JUN 2026 to 09 JUL 2026