

APP CRS	Rwy Ldg	<b>9000</b>
<b>123°</b>	TDZE	<b>617</b>
	Apt Elev	<b>617</b>

# RNAV (RNP) Z RWY 11

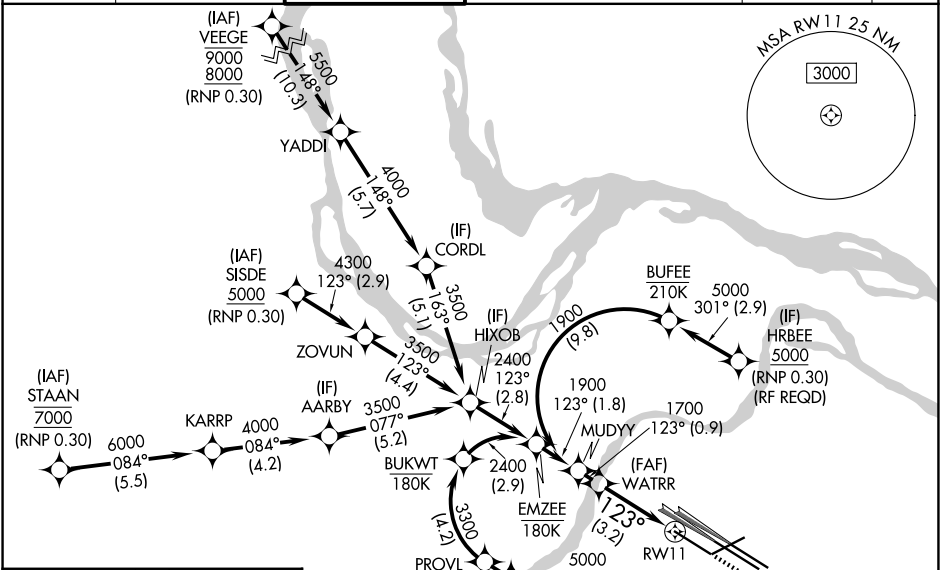
ST LOUIS LAMBERT INTL (STL)

RNP AR APCH - GPS, min RNP 0.30. Authorization required from HRBEE or RRIPP: RF.  
 RADAR required for procedure entry.

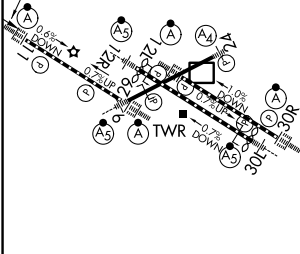
ALS-F2 	MISSED APPROACH: Climb to 1100 then climbing right turn to 3000 direct IMPER and hold.
------------	--

Simultaneous approach authorized with Rwsy 12L/R, except for arrivals at RRIPP and HRBEE. Use of FD or AP providing RNAV track guidance required during simultaneous operations. For uncompensated Baro-VNAV systems, procedure NA below -16°C or above 54°C. For inop ALS, increase RNP 0.30 all Cats visibility to RVR 4500.

D-ATIS <b>125,025</b> <b>379,925</b>	ST. LOUIS APP CON <b>132.125 360.6</b>	ST. LOUIS TOWER <b>132.475 239.275</b>	GND CON <b>121.9 348.6</b> (Inbound) <b>121.65 377.175</b> (Outbound) <b>118.925 227.125</b> (Rwy 11/29)	CLNC DEL <b>119.5 363.1</b>	CPDLC
--	---	---	---	--------------------------------	-------



ELEV 617	<b>D</b>	TDZE 617
Rwy 6-24 7603 X 150 Rwy 11-29 9000 X 150 Rwy 12L-30R 9013 X 150 Rwy 12R-30L 11020 X 150		



MISSED APCH FIX

IMPER

1100 3000 IMPER

See planview for multiple IF locations.

MUDYY	1900	1700	1100	3000	IMPER
WATRR					
GP 3.00°					
TCH 59					
	0.9 NM	3.2 NM			
CATEGORY	A	B	C	D	
RNP 0.30 DA	925/24 308 (400-1/2)				

HIRL all Rwsy  
 TDZ/CL Rwsy 11, 12L, 12R, 29, and 30R

**AUTHORIZATION REQUIRED**

NC-3, 11 JUN 2026 to 09 JUL 2026

NC-3, 11 JUN 2026 to 09 JUL 2026