

APP CRS	Rwy Ldg	<b>8956</b>
<b>123°</b>	TDZE	<b>541</b>
	Apt Elev	<b>617</b>

# RNAV (RNP) Z RWY 12L

ST LOUIS LAMBERT INTL (STL)

RNP AR APCH - GPS. Authorization required from HRBEE or RRIPP: RF.

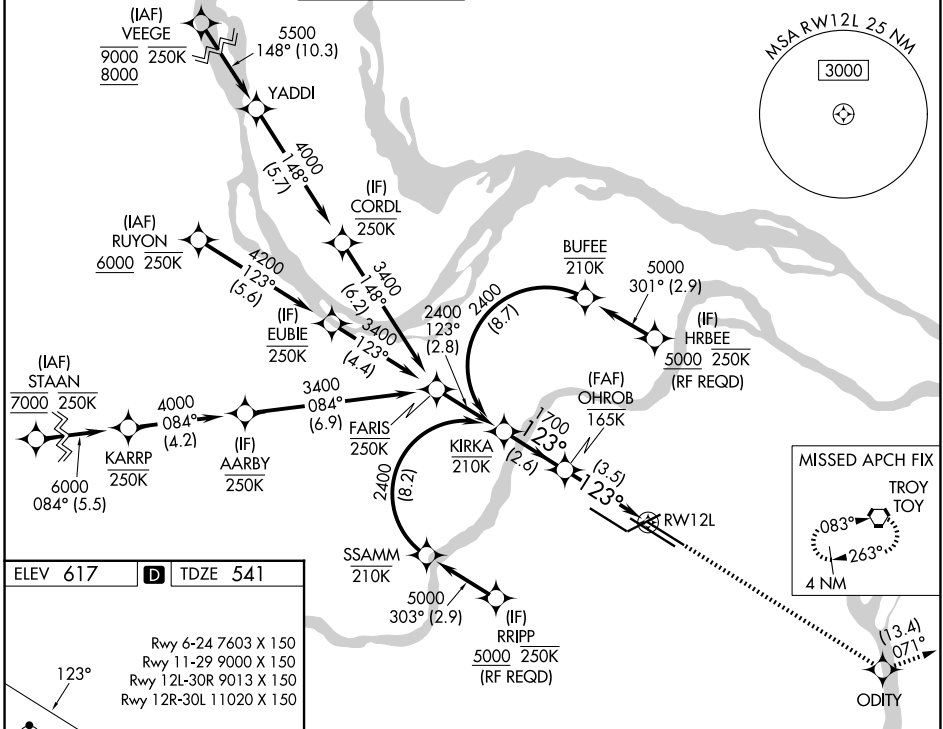
RADAR required for procedure entry

Use of FD or AP required during simultaneous operations. Simultaneous approach authorized with Rwy 11, except for arrivals at RRIPP and HRBEE. For uncompensated Baro-VNAV systems, procedure NA below -16°C or above 54°C. For inop ALS, increase RNP 0.30 all Cats visibility to 1 1/8 SM.

ALSF-2

MISSED APPROACH: Climb to 3000 direct ODITY and track 071° to TOY VORTAC and hold.

D-ATIS	ST. LOUIS APP CON	ST. LOUIS TOWER	GND CON	CLNC DEL	CPDLC
<b>125.025</b>	<b>132.125 360.6</b>	<b>120.05 284.6</b>	<b>121.9 348.6</b> (Inbound)	<b>119.5 363.1</b>	
<b>379.925</b>			<b>121.65 377.175</b> (Outbound)		
			<b>118.925 227.125</b> (Rwy 11/29)		



NC-3, 11 JUN 2026 to 09 JUL 2026

NC-3, 11 JUN 2026 to 09 JUL 2026

ELEV 617 **D** TDZE 541

Rwy 6-24 7603 X 150  
Rwy 11-29 9000 X 150  
Rwy 12L-30R 9013 X 150  
Rwy 12R-30L 11020 X 150

HIRL all Rwys  
TDZ/CL Rwys 11, 12L, 12R, 29, and 30R

VGSI and RNAV glidepath not coincident (VGSI Angle 3.00/TCH 60).

KIRKA	OHROB	3000	ODITY	tr 071°	TOY
2400	1700				

GP 3.00° TCH 54

2.6 NM      3.5 NM

CATEGORY	A	B	C	D
RNP 0.30 DA	1055/55 514 (500-1)			

**AUTHORIZATION REQUIRED**