

# RNAV (RNP) Z RWY 12R

ST LOUIS LAMBERT INTL (STL)

APP CRS	Rwy Ldg	<b>10553</b>
<b>123°</b>	TDZE	<b>540</b>
	Apt Elev	<b>617</b>

RNP AR APCH - GPS. Authorization required from HRBEE or RRIIP: RF.

RADAR required for procedure entry.

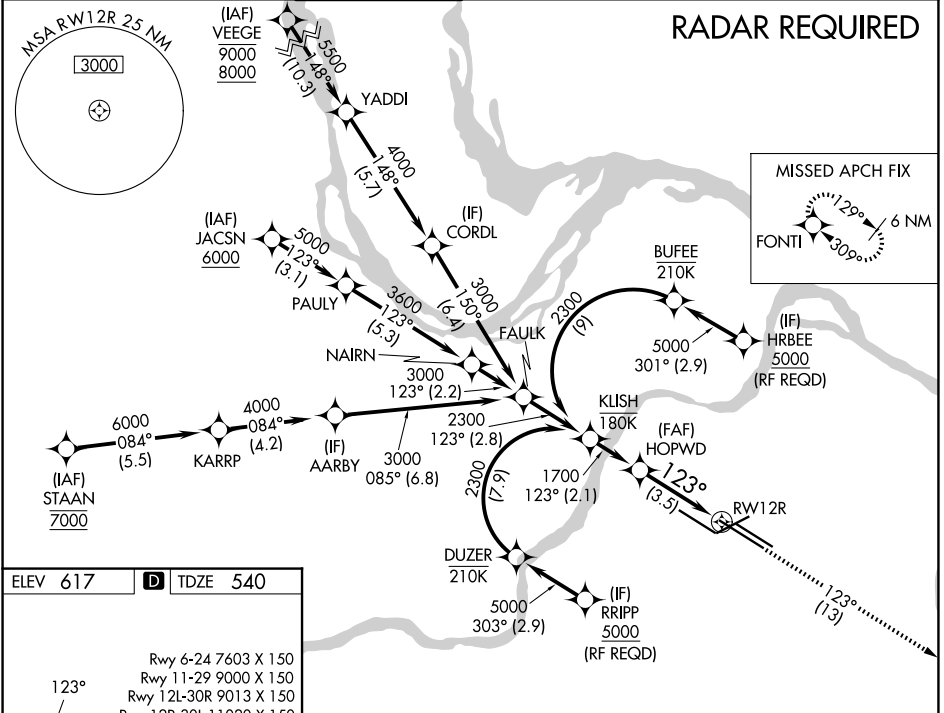
▼ For uncompensated Baro-VNAV systems, procedure NA below -16°C or above 54°C. For inop ALS, increase RNP 0.30 all Cats visibility to 1½ SM. Simultaneous approach authorized with Rwy 11 except for arrivals at RRIIP and HRBEE. Use of FD or AP required during simultaneous operations.

MALSR



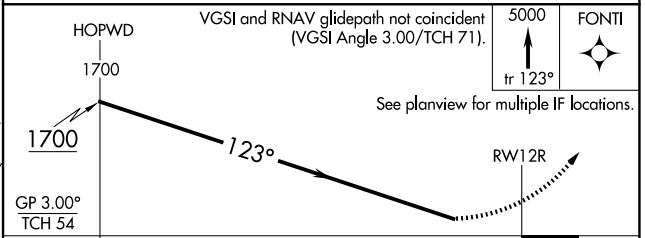
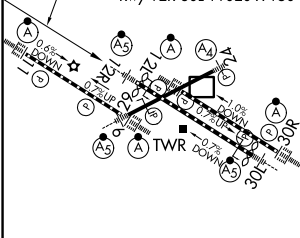
MISSED APPROACH: Climb to 5000 on track 123° to FONTI and hold, continue climb-in-hold to 5000.

D-ATIS <b>125.025</b> <b>379.925</b>	ST. LOUIS APP CON <b>132.125 360.6</b>	ST. LOUIS TOWER <b>118.5 257.7</b>	GND CON <b>121.9 348.6</b> (Inbound) <b>121.65 377.175</b> (Outbound) <b>118.925 227.125</b> (Rwy 11/29)	CLNC DEL <b>119.5 363.1</b>	CPDLC
--	---	---------------------------------------	---	--------------------------------	-------



ELEV 617	<b>D</b> TDZE 540
----------	-------------------

Rwy 6-24 7603 X 150  
Rwy 11-29 9000 X 150  
Rwy 12L-30R 9013 X 150  
Rwy 12R-30L 11020 X 150



CATEGORY	A	B	C	D
RNP 0.30 DA	998/60 458 (400-1¼)			

## AUTHORIZATION REQUIRED

NC-3, 11 JUN 2026 to 09 JUL 2026

NC-3, 11 JUN 2026 to 09 JUL 2026