

APP CRS	Rwy Ldg 10679
303°	TDZE 583
	Apt Elev 617

RNAV (RNP) Z RWY 30L

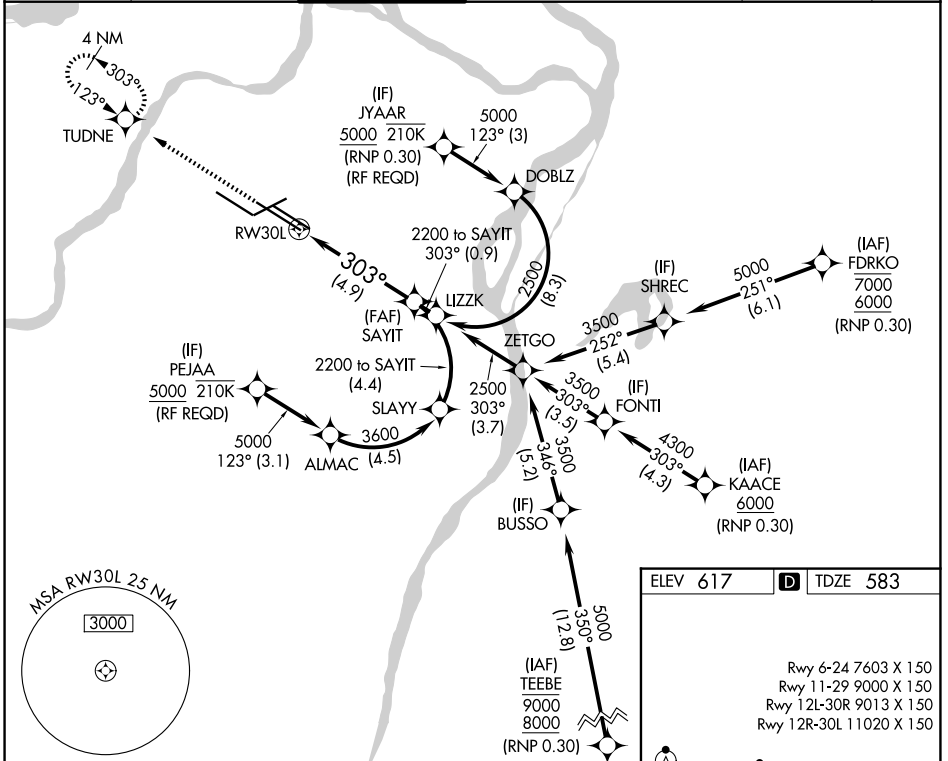
ST LOUIS LAMBERT INTL (STL)

RNP AR APCH - GPS. Authorization required.
 From FRDKO, JYAAR, KAACE, or TEEBE, min RNP 0.30. From PEJAA or JYAAR: RF.
 Use of FD or AP required during simultaneous operations. Simultaneous approach authorized with Rwy 29, except for arrivals at JYAAR and PEJAA. For uncompensated Baro-VNAV systems, procedure NA below -18°C or above 54°C. For inop ALS, increase RNP 0.30 all Cats visibility to RVR 6000.

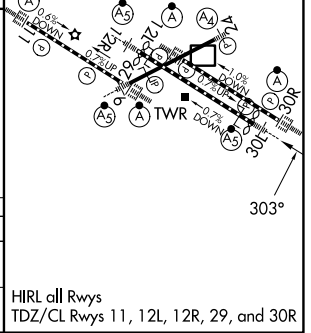
MALSR

 MISSED APPROACH: Climb to 3000 direct TUDNE and hold, continue climb-in-hold to 3000.

D-ATIS 125.025 379.925	ST. LOUIS APP CON 132.125 360.6	ST. LOUIS TOWER 118.5 257.7	GND CON 121.9 348.6 (Inbound) 121.65 377.175 (Outbound) 118.925 227.125 (Rwy 11/29)	CLNC DEL 119.5 363.1	CPDLC
--	---	---------------------------------------	---	--------------------------------	-------



3000	TUDNE	See planview for multiple IF locations.	SAYIT
			2200
			2200
			GP 3.00° TCH 58
CATEGORY	A	B	C
RNP 0.30 DA		998/40	415 (400-3/4)
AUTHORIZATION REQUIRED			



NC-3, 11 JUN 2026 to 09 JUL 2026

NC-3, 11 JUN 2026 to 09 JUL 2026

HIRL all Rwys
 TDZ/CL Rwys 11, 12L, 12R, 29, and 30R