

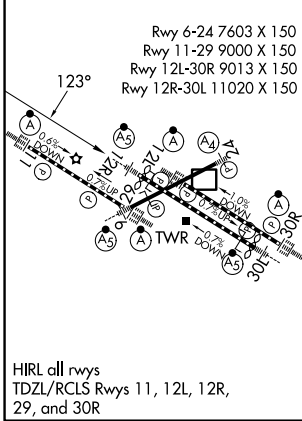
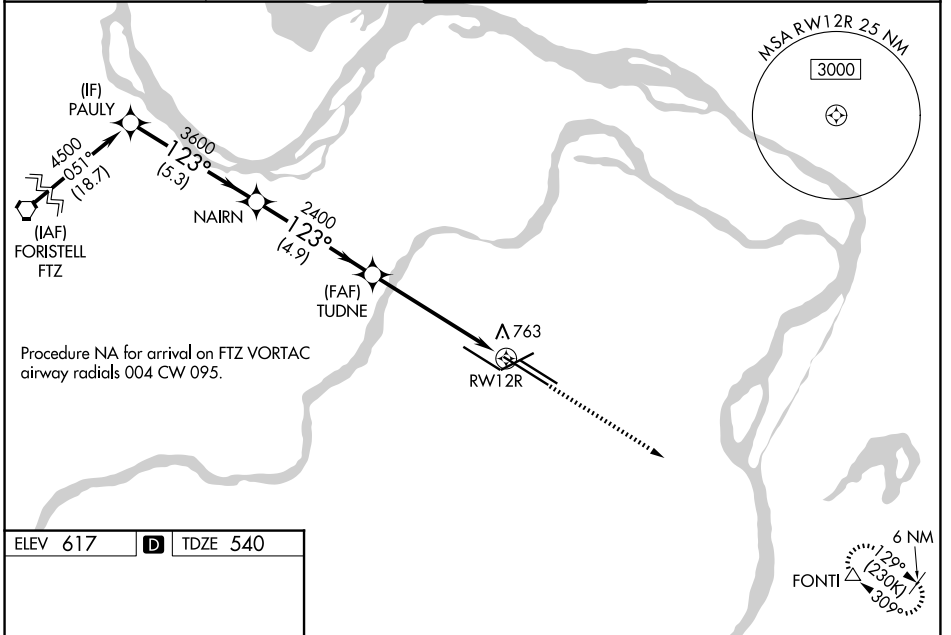
WAAS CH <b>78121</b> <b>W12B</b>	APP CRS <b>123°</b>	Rwy Ldg TDZE Apt Elev	<b>10552</b> <b>540</b> <b>617</b>
--	------------------------	-----------------------------	--

# RNAV (GPS) Y RWY 12R

ST LOUIS LAMBERT INTL (STL)

<p>RNP APCH - GPS.</p> <p>▼ Rwy 12R helicopter visibility reduction below RVR 4000 NA. For uncompensated Baro-VNAV systems, LNAV/VNAV NA below -16°C or above 54°C. Simultaneous approach authorized with Rwy 11. LNAV procedure NA during simultaneous operations. Use of FD or AP required during simultaneous operations. For inop ALS, increase LPV Cat E visibility to RVR 4000, LNAV/VNAV all Cats visibility to 1½ SM, LNAV Cats A/B visibility to RVR 5500, and LNAV Cat C/D/E visibility to 1¾ SM.</p>		<p>MALSR</p>	<p>MISSED APPROACH: Climb to 5000 direct FONTI and hold, continue climb-in-hold to 5000.</p>
---	--	--------------	--

D-ATIS <b>125.025 379.925</b>	ST. LOUIS APP CON <b>132.125 360.6</b>	ST. LOUIS TOWER <b>118.5 257.7</b>	GND CON <b>121.9 348.6</b> (Inbound) <b>121.65 377.175</b> (Outbound) <b>118.925 227.125</b> (1/1/29)
----------------------------------	---	---------------------------------------	--



	PAULY	NAI RN	TUDNE	FONTI	
	4500	3600	2400	5000	△
	VGSI and RNAV glidepath not coincident (VGSI Angle 3.00/TCH 71).				
	GP 3.00° TCH 54				
	1.3 NM to RWY 12R				
	-5.3 NM -4.9 NM -4.4 NM -1.3				
CATEGORY	A	B	C	D	E
LPV DA	740/18		200 (200-½)		
LNAV/VNAV DA	1103-1¼		563 (500-1¼)		
LNAV MDA	1020/40	480 (500-¾)	1020/50		480 (500-1)

NC-3, 11 JUN 2026 to 09 JUL 2026

NC-3, 11 JUN 2026 to 09 JUL 2026