

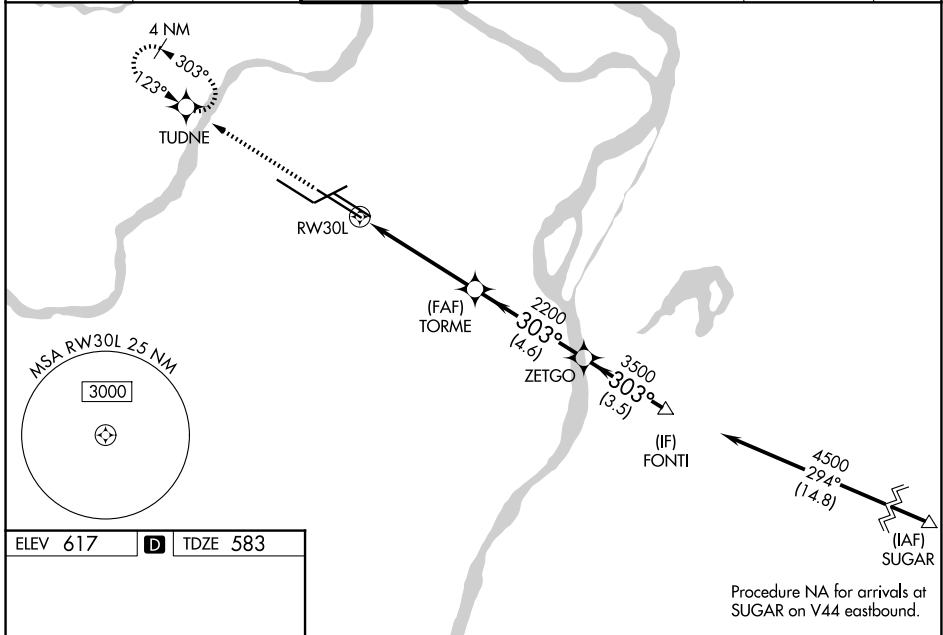
WAAS CH <b>99621</b> <b>W30B</b>	APP CRS <b>303°</b>	Rwy Ldg <b>10679</b> TDZE <b>583</b> Apt Elev <b>617</b>
--	------------------------	--

# RNAV (GPS) Y RWY 30L

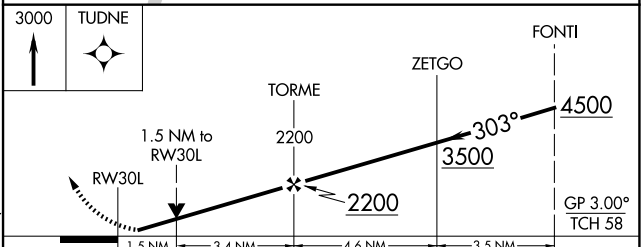
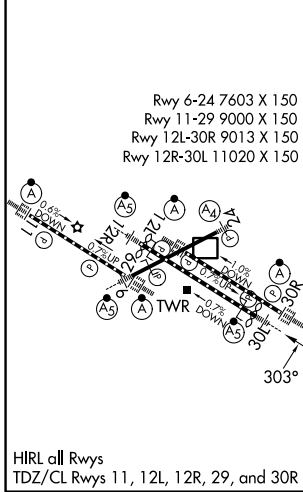
ST LOUIS LAMBERT INTL (STL)

RNP APCH - GPS.		MALSR 	MISSED APPROACH: Climb to 3000 direct TUDNE and hold, continue climb-in-hold to 3000.
Simultaneous approach authorized with Rwy 29. LNAV procedure NA during simultaneous operations. Use of FD or AP required during simultaneous operations. For uncompensated Baro-VNAV systems, LNAV/VNAV NA below -18°C or above 54°C. Rwy 30L helicopter visibility reduction below RVR 4000 NA. For inop ALS, increase LNAV/VNAV all Cats visibility to RVR 6000 and LNAV Cat A/B visibility to RVR 5500. *RVR 1800 authorized with use of FD or AP or HUD to DA.			

D-ATIS <b>125.025</b> <b>379.925</b>	ST. LOUIS APP CON <b>132.125 360.6</b>	ST. LOUIS TOWER <b>118.5 257.7</b>	GND CON <b>121.9 348.6</b> (Inbound) <b>121.65 377.175</b> (Outbound) <b>118.925 227.125</b> (Rwy 11/29)	CLNC DEL <b>119.5 363.1</b>	CPDLC
--	---	---------------------------------------	---	--------------------------------	-------



ELEV 617	<b>D</b>	TDZE 583
----------	----------	----------



CATEGORY	A	B	C	D
LPV DA*		783/24	200 (200-1/2)	
LNAV/VNAV DA		974/40	391 (400-3/4)	
LNAV MDA	1120/40	537 (600-3/4)	1120/55	537 (600-1)

NC-3, 11 JUN 2026 to 09 JUL 2026

NC-3, 11 JUN 2026 to 09 JUL 2026