

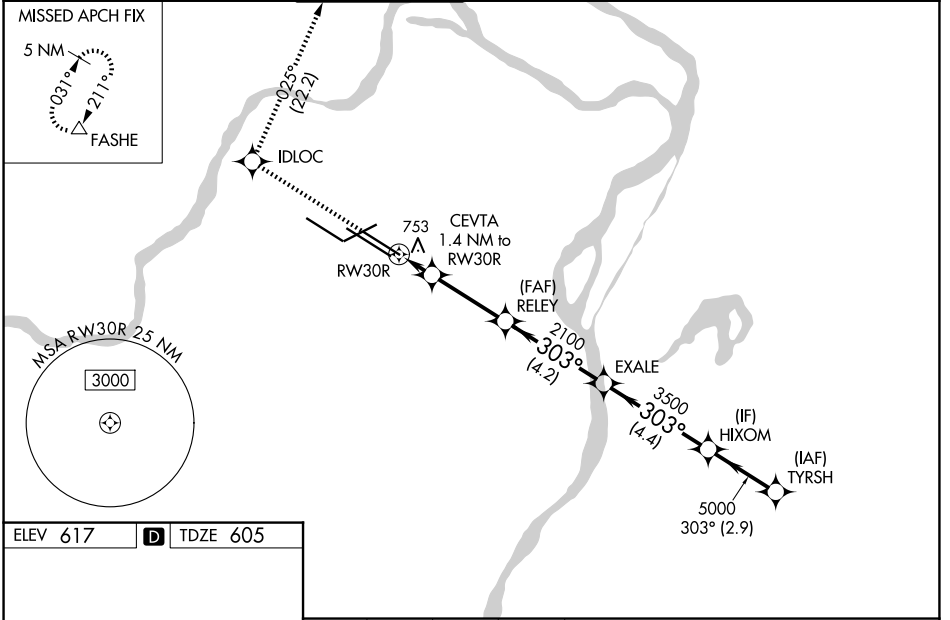
WAAS CH 73000 W30A	APP CRS 303°	Rwy Ldg TDZE Apt Elev	9013 605 617
--	------------------------	-----------------------------	---

RNAV (GPS) Y RWY 30R

ST LOUIS LAMBERT INTL (STL)

RNP APCH - GPS.		ALSF-2 	MISSED APPROACH: Climb to 3000 direct IDLOC and on track 025° to FASHE and hold.
RADAR required for procedure entry.			
<p>▼ For uncompensated Baro-VNAV systems, LNAV/VNAV NA below -15°C or above 54°C. LNAV procedure NA during simultaneous operations. Use of FD or AP required during simultaneous operations. Simultaneous approach authorized with Rwy 29. For inop ALS, increase LPV Cat E visibility to RVR 4000, LNAV/VNAV all Cats visibility to RVR 4500, LNAV Cat C/D/E visibility to RVR 6000.</p>			

D-ATIS 125.025 379.925	ST. LOUIS APP CON 132.125 360.6	ST. LOUIS TOWER 120.05 284.6	GND CON 121.9 348.6 (Inbound) 121.65 377.175 (Outbound) 118.925 227.125 (Rwy 11/29)	CLNC DEL 119.5 363.1	CPDLC
--	---	--	---	--------------------------------	-------



ELEV 617	D	TDZE 605
----------	----------	----------

Rwy 6-24 7603 X 150
Rwy 11-29 9000 X 150
Rwy 12L-30R 9013 X 150
Rwy 12R-30L 11020 X 150

HIRL all Rwys
TDZ/CL Rwys 11, 12L, 12R, 29, and 30R

3000	IDLOC	FASHE	HIXOM	TYRSH	
↑	◆	tr 025°	△		
RW30R	CEVTA 1.4 NM to RW30R	RELEY 2100	EXALE 3500	5000	
1100	2100	3500	5000	GP 3.00° TCH 57	
1.4	3.1 NM	4.2 NM	4.4 NM	2.9 NM	
CATEGORY	A	B	C	D	E
LPV	DA	805/18		200 (200-½)	
LNAV/VNAV	DA	914/24		309 (300-½)	
LNAV	MDA	1020/24		415 (500-½)	
		1020/40		415 (500-¾)	

NC-3, 11 JUN 2026 to 09 JUL 2026

NC-3, 11 JUN 2026 to 09 JUL 2026