

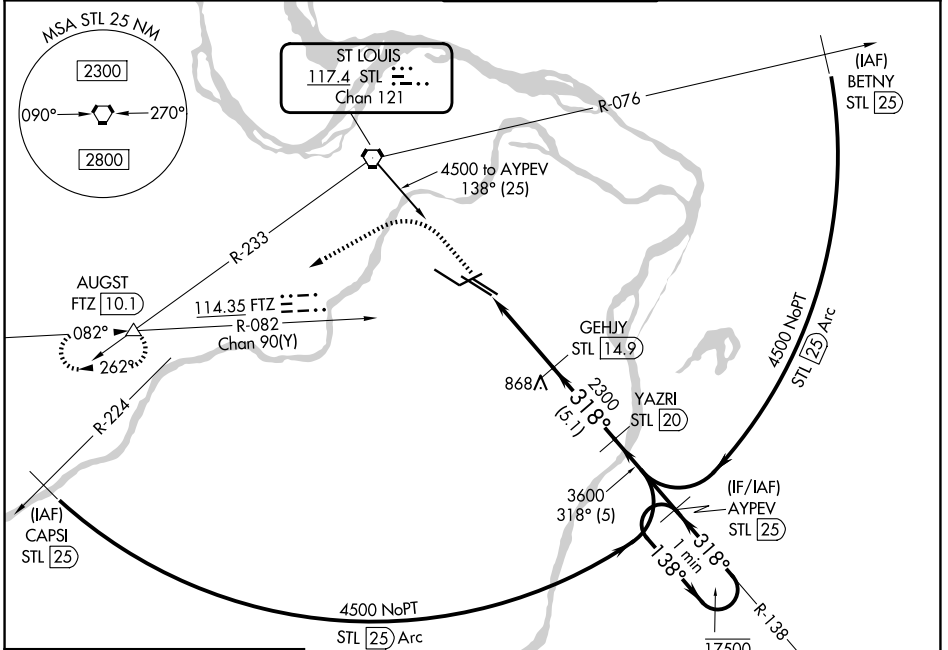
VORTAC STL <b>117.4</b> Chan <b>121</b>	APP CRS <b>318°</b>	Rwy Ldg TDZE <b>583</b> Apt Elev <b>617</b>
---	------------------------	---

# TACAN RWY 30L

ST LOUIS LAMBERT INTL (STL)

<p>▼ Inop table does not apply. Rwy 30L helicopter visibility reduction below RVR 5000 NA. Procedure NA at night.</p>	MALSR	MISSED APPROACH: Climb to 1200 then climbing left turn to 5000 on heading 240° and FTZ VORTAC R-082 to AUGST INT/FTZ 10.1 DME and hold, continue climb-in-hold to 5000.

D-ATIS <b>125.025 379.925</b>	ST. LOUIS APP CON <b>132.125 360.6</b>	ST. LOUIS TOWER <b>118.5 257.7</b>	GND CON <b>121.9 348.6</b> (Inbound) <b>121.65 377.175</b> (Outbound) <b>118.925 227.125</b> (11/29)
----------------------------------	---	---------------------------------------	---

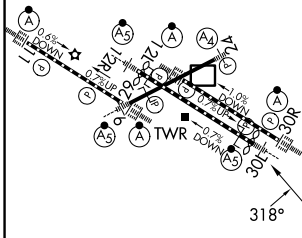


NC-3, 11 JUN 2026 to 09 JUL 2026

NC-3, 11 JUN 2026 to 09 JUL 2026

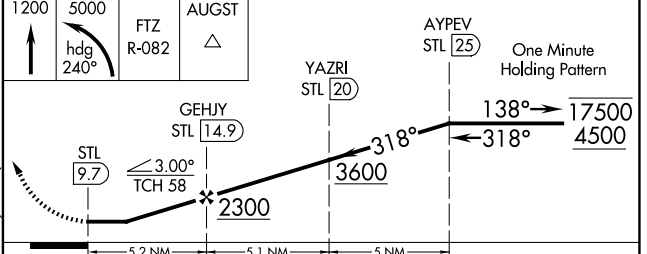
ELEV 617	<b>D</b>	TDZE 583
----------	----------	----------

Rwy 6-24 7603 X 150  
Rwy 11-29 9000 X 150  
Rwy 12L-30R 9013 X 150  
Rwy 12R-30L 11020 X 150



HIRL all rwys  
TDZL/RCLS Rwyys 11, 12L, 12R,  
29, and 30R

1200	5000	FTZ R-082	AUGST	AYPEV STL 25	One Minute Holding Pattern
↑	hdg 240°		△		



CATEGORY	A	B	C	D	E
S-30L	1120/55	537 (600-1)	1120-1½	537 (600-1½)	