

LOC/DME I-MOY 109.5 Chan 32	APP CRS 164°	Rwy Ldg 12002 TDZE 4231 Apt Elev 4231
---	------------------------	--

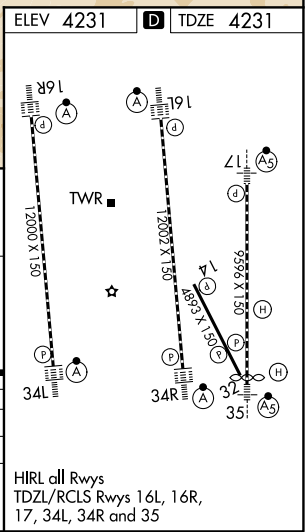
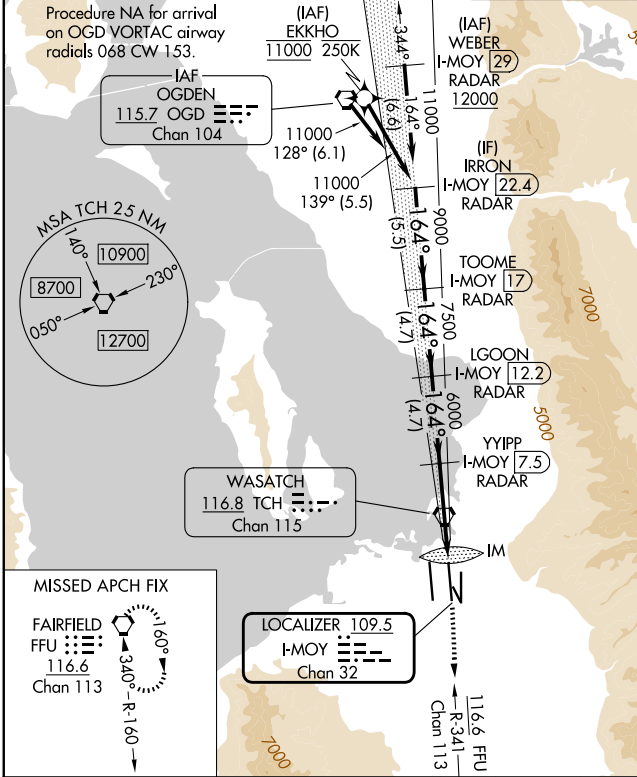
ILS RWY 16L (CAT II & III)

SALT LAKE CITY INTL (SLC)

RNP APCH - GPS. From EKKHO.
DME or RADAR required. RADAR required for procedure entry at WEBER.
Simultaneous approach authorized. CAT II: RVR 1000 authorized with specific OPSPEC, MSPEC, or LOA approval and use of autoland or HUD to touchdown.

ALSF-2
MISSED APPROACH: Climb to 4800 then climb to 10000 on FFU VORTAC R-341 to FFU VORTAC and hold.

D-ATIS 124.75 125.625	SALT LAKE CITY APP CON 125.7 284.6	SALT LAKE CITY TOWER 119.05 257.8	GND CON 123.775 348.6
---------------------------------	--	---	---------------------------------



IRRON I-MOY 22.4 RADAR	TOOME I-MOY 17 RADAR	LGOON I-MOY 12.2 RADAR	YYIPP I-MOY 7.5 RADAR	IM 4331	FFU
VGS1 and ILS glidepath not coincident (VGS1 Angle 3.00/TCH 70).					4800
GS 3.00° TCH 55					10000
FFU R-341					FFU
11000 → 164° → 9000 → 7500 → 6000 → 4331					
5.5 NM 4.7 NM 4.7 NM 5.4 NM 1.026 NM					

CATEGORY	A	B	C	D
S-ILS 16L	CAT II RA 109/12 100 DA 4331			
S-ILS 16L	CAT III RVR 03			
CATEGORY II & III ILS - SPECIAL AIRCREW & AIRCRAFT CERTIFICATION REQUIRED				

SW-4, 11 JUN 2026 to 09 JUL 2026

SW-4, 11 JUN 2026 to 09 JUL 2026