

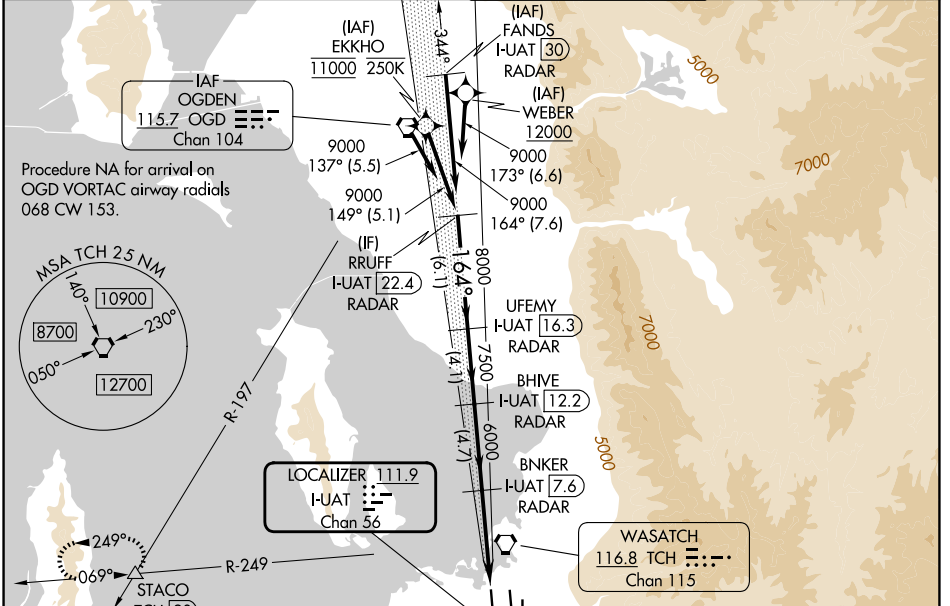
LOC/DME I-UAT <b>111.9</b> Chan <b>56</b>	APP CRS <b>164°</b>	Rwy Ldg <b>12000</b> TDZE <b>4226</b> Apt Elev <b>4231</b>
---	------------------------	---

# ILS RWY 16R (CAT II & III)

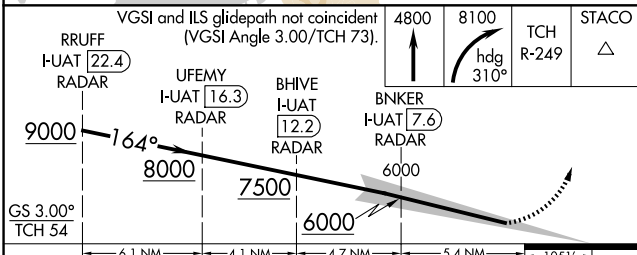
SALT LAKE CITY INTL (SLC)

RNP APCH - GPS. From EKKHO or WEBER. DME or RADAR required.	ALSF-2 	MISSED APPROACH: Climb to 4800 then climbing right turn to 8100 on heading 310° and on TCH VORTAC R-249 to STACO INT/TCH 20 DME and hold.
<p>Simultaneous approach authorized. CAT II: RVR 1000 authorized with specific OPSPEC, MSPEC, or LOA approval and use of autoland or HUD to touchdown.</p>		

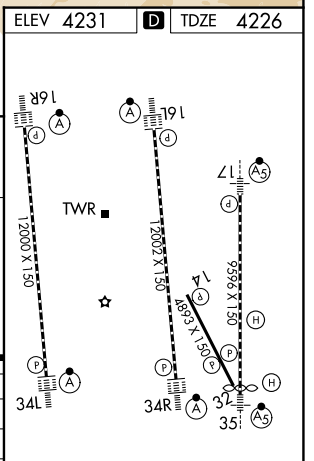
D-ATIS <b>124.75 125.625</b>	SALT LAKE CITY APP CON <b>125.7 284.6</b>	SALT LAKE CITY TOWER <b>132.65 336.4</b>	GND CON <b>123.775 348.6</b>
---------------------------------	--	---	---------------------------------



ELEV 4231	<b>D</b> TDZE 4226
-----------	--------------------



RRUFF I-UAT 22.4 RADAR	UFEMY I-UAT 16.3 RADAR	BHIVE I-UAT 12.2 RADAR	BNKER I-UAT 7.6 RADAR	TCH R-249	STACO
9000	8000	7500	6000	4800	8100
GS 3.00° TCH 54					
CATEGORY	A	B	C	D	
S-ILS 16R	CAT II RA 104/12 100 DA 4326				
S-ILS 16R	CAT III RVR 03				



**CATEGORY II & III ILS - SPECIAL AIRCREW & AIRCRAFT CERTIFICATION REQUIRED**

HIRL all Rwys  
TDZL/RCLS Rwys 16L, 16R, 17, 34L, 34R, and 35

SW-4, 11 JUN 2026 to 09 JUL 2026

SW-4, 11 JUN 2026 to 09 JUL 2026