

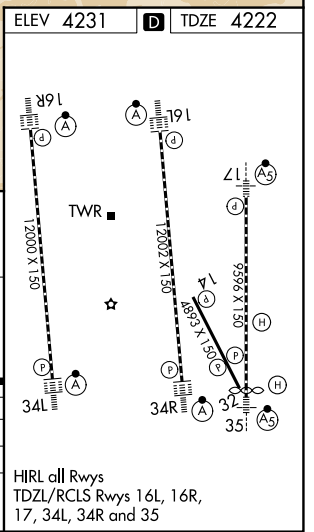
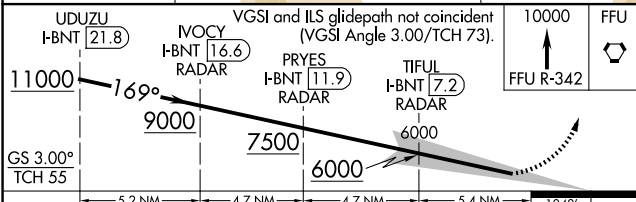
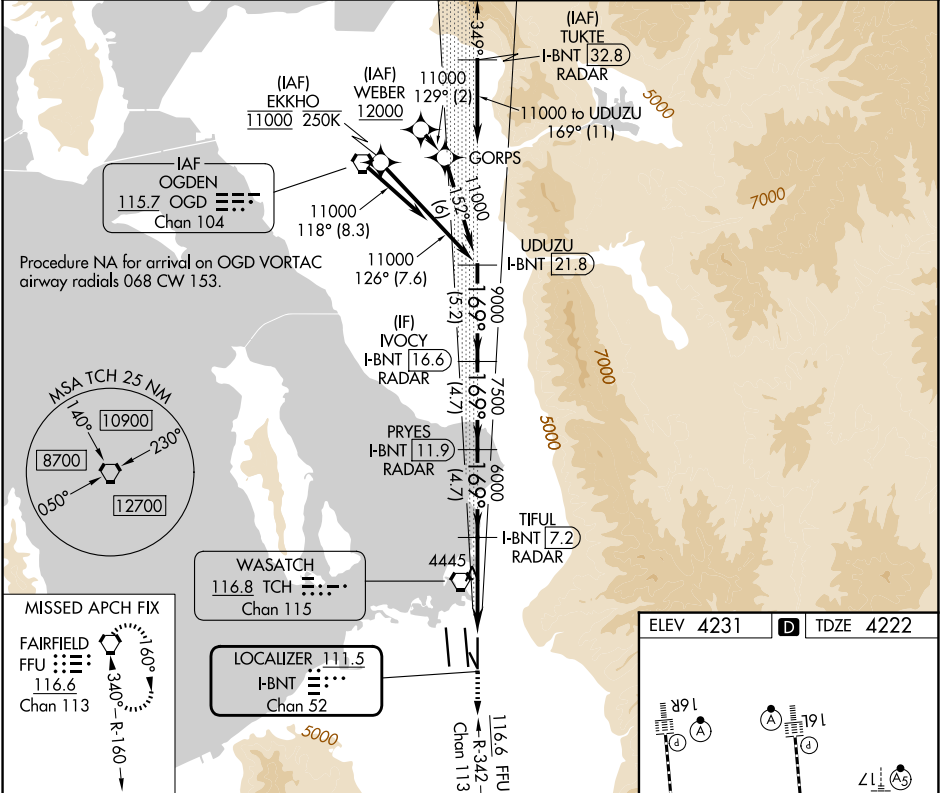
LOC/DME I-BNT 111.5 Chan 52	APP CRS 169°	Rwy Ldg TDZE 4222 Apt Elev 4231
---	------------------------	---

ILS RWY 17 (SA CAT I & II)

SALT LAKE CITY INTL (SLC)

RNP APCH-GPS. From WEBER or EKKHO.		MALSR 	MISSED APPROACH: Climb to 10000 on FFU VORTAC R-342 to FFU VORTAC and hold.
DME or RADAR required. RADAR required for procedure entry at TUKTE.			
<p>Simultaneous approach authorized. SA CAT I: Requires specific OPSPEC, MSPEC, or LOA approval and use of HUD to DH. SA CAT II: Reduced lighting: Requires specific OPSPEC, MSPEC, or LOA approval and use of autoland or HUD to touchdown.</p>			

D-ATIS 124.75 125.625	SALT LAKE CITY APP CON 125.7 284.6	SALT LAKE CITY TOWER 118.3 257.8	GND CON 121.9 348.6
---------------------------------	--	--	-------------------------------



UDUZU I-BNT [21.8]	IVOCY I-BNT [16.6] RADAR	PRYES I-BNT [11.9] RADAR	TIFUL I-BNT [7.2] RADAR	10000 FFU
5.2 NM	4.7 NM	4.7 NM	5.4 NM	1048'
GS 3.00° TCH 55	11000 9000 7500 6000			
CATEGORY	A	B	C	D
S-ILS 17	SA CAT I RA 150/14 150 DA 4372			
S-ILS 17	SA CAT II RA 100/12 100 DA 4322			

SA CATEGORY I & II ILS - SPECIAL AIRCREW & AIRCRAFT CERTIFICATION REQUIRED

SW-4, 11 JUN 2026 to 09 JUL 2026

SW-4, 11 JUN 2026 to 09 JUL 2026