

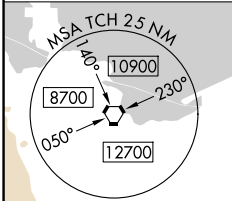
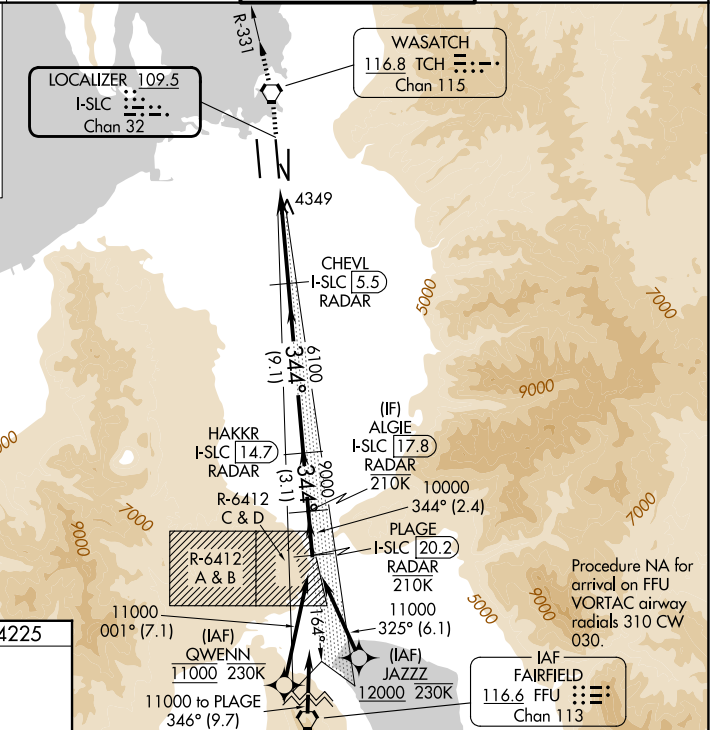
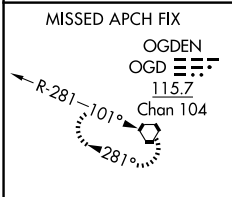
LOC/DME I-SLC 109.5 Chan 32	APP CRS 344°	Rwy Ldg 12002 TDZE 4225 Apt Elev 4231
---	------------------------	--

ILS RWY 34R (SA CAT I)

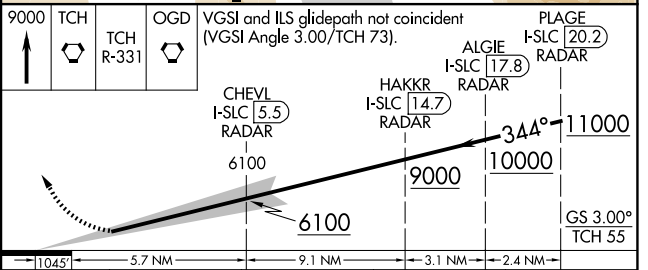
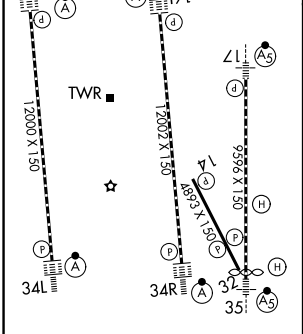
SALT LAKE CITY INTL (SLC)

RNP APCH-GPS. From QWENN or JAZZ.	ALSF-2 	MISSED APPROACH: Climb to 9000 direct TCH VORTAC and on TCH VORTAC R-331 to OGD VORTAC and hold.
DME required for LOC only. DME or RADAR required.		
Simultaneous approach authorized. Requires specific OPSPEC, MSPEC, or LOA approval.		

D-ATIS 124.75 125.625	SALT LAKE CITY APP CON 125.7 284.6	SALT LAKE CITY TOWER 119.05 257.8	GND CON 123.775 348.6
---------------------------------	--	---	---------------------------------



ELEV 4231	D	TDZE 4225
-----------	----------	-----------



CATEGORY	A	B	C	D
S-ILS 34R	RA 149/14 150 DA 4375			

SA CATEGORY I ILS - SPECIAL AIRCREW & AIRCRAFT CERTIFICATION REQUIRED

HIRL all Rwys
TDZL/RCLS Rwys 16L, 16R,
17, 34L, 34R and 35

SW-4, 11 JUN 2026 to 09 JUL 2026

SW-4, 11 JUN 2026 to 09 JUL 2026